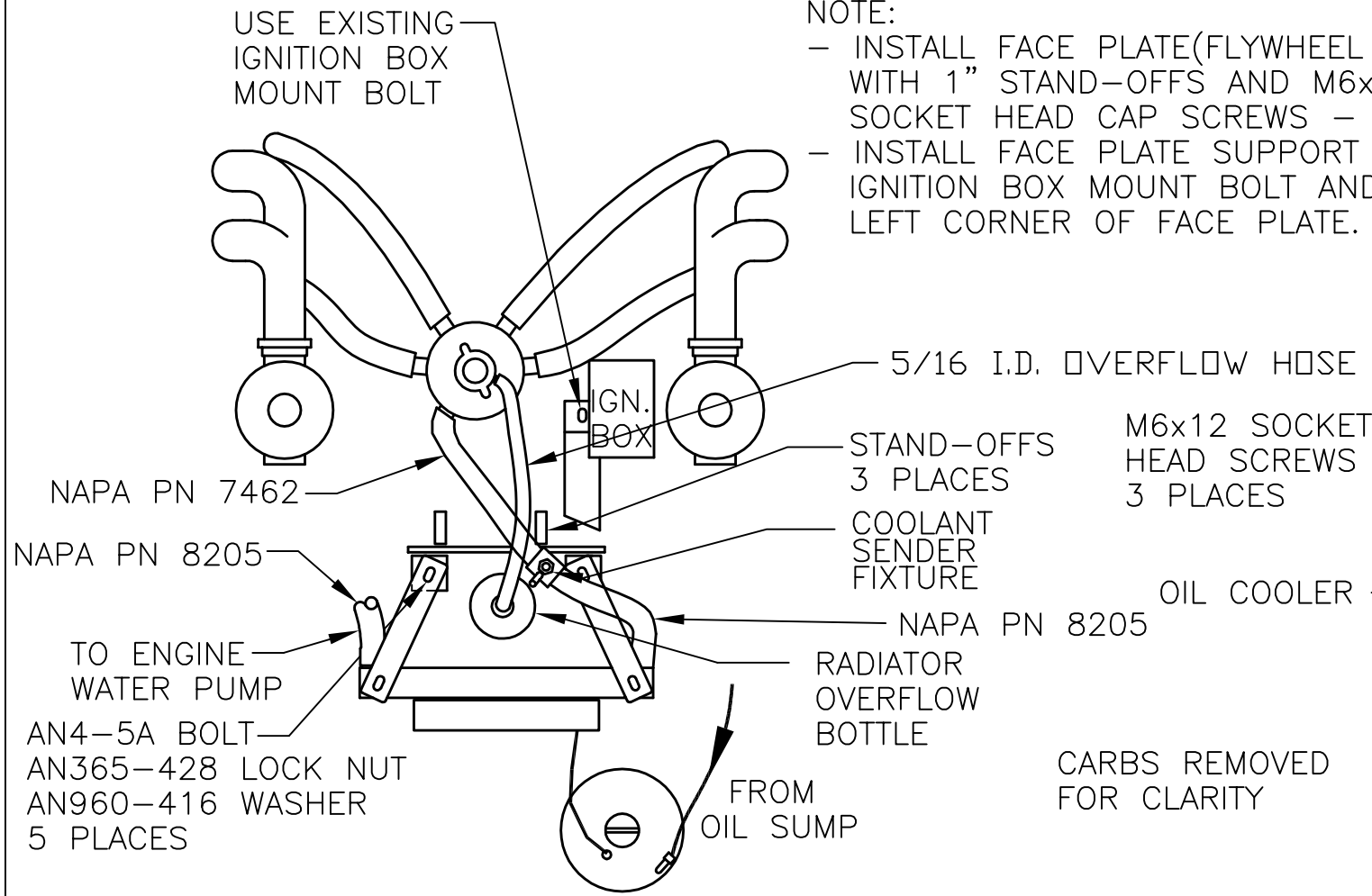


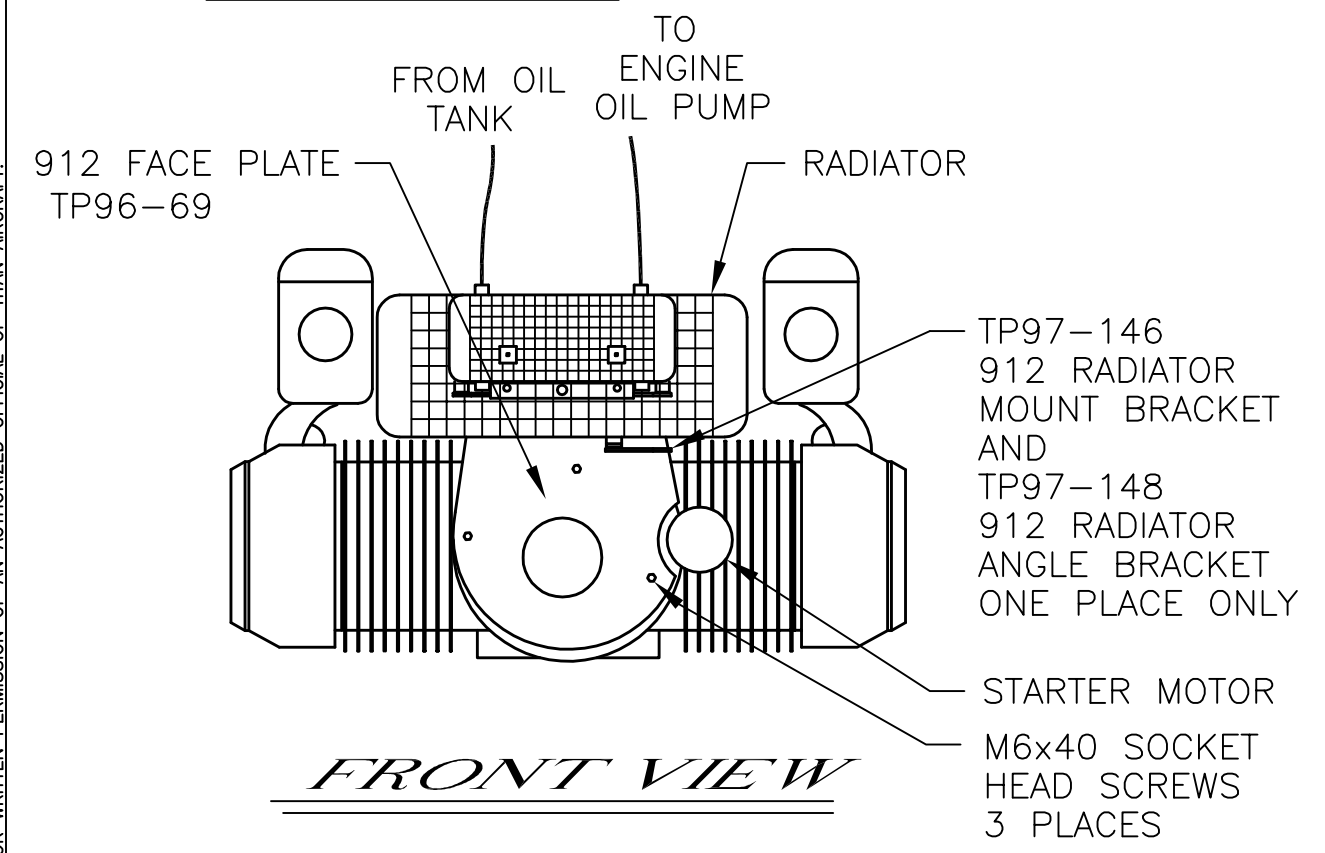
THIS DOCUMENT PROPRIETARY TO TITAN AIRCRAFT, AND IS NOT TO BE USED, CIRCULATED, REPRODUCED, COPIED, OR DISCLOSED IN ANY MANNER WITHOUT PRIOR WRITTEN PERMISSION OF AN AUTHORIZED OFFICIAL OF TITAN AIRCRAFT.

NOTE:

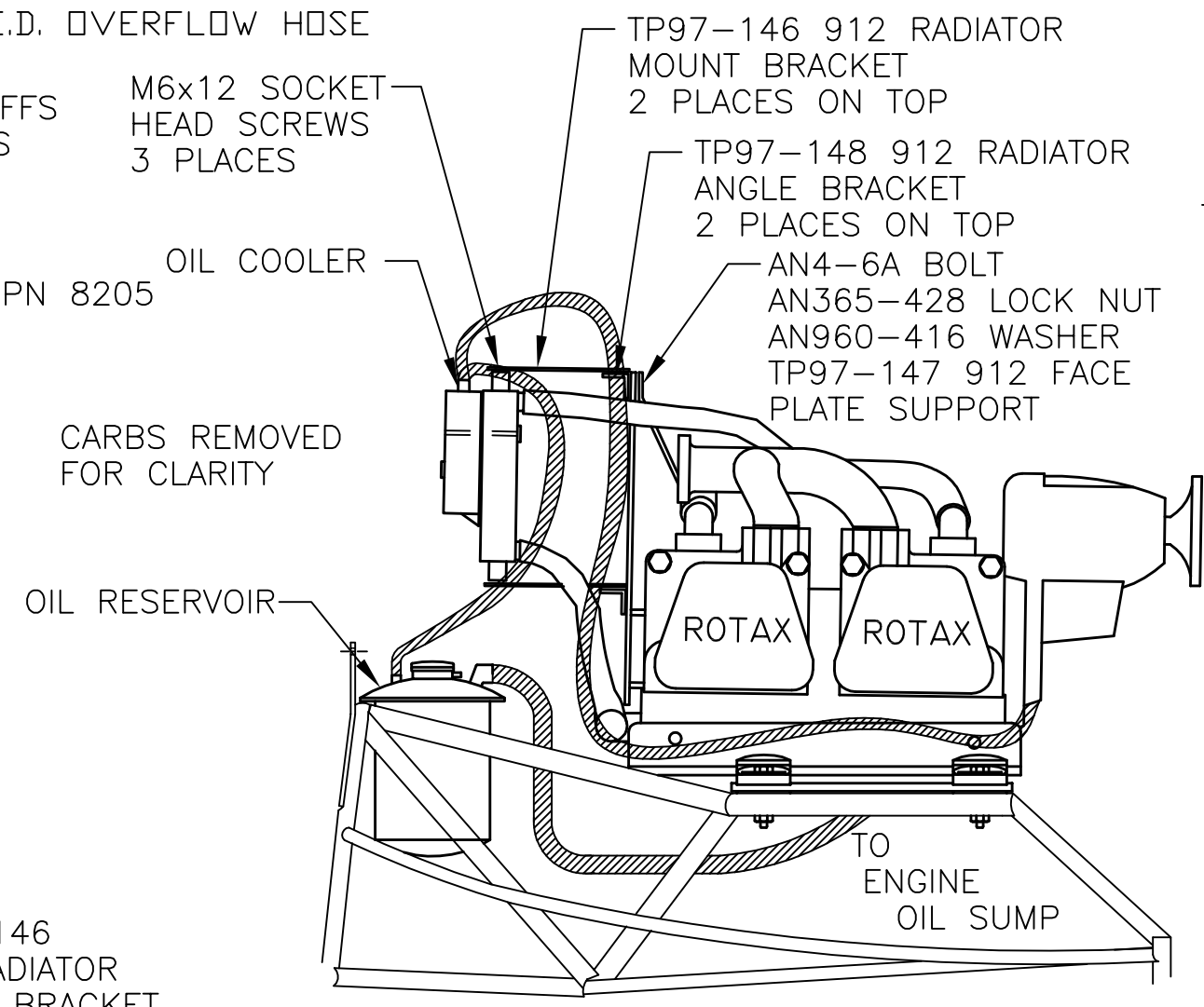
- INSTALL FACE PLATE (FLYWHEEL COVER) WITH 1" STAND-OFFS AND M6x40 SOCKET HEAD CAP SCREWS - 3 PLACES
- INSTALL FACE PLATE SUPPORT TO IGNITION BOX MOUNT BOLT AND TOP LEFT CORNER OF FACE PLATE.
- INSTALL THE TWO TOP ANGLE BRACKETS AND RADIATOR MOUNTS THEN MOUNT RADIATOR WITH M6x12 SOCKET HEAD CAP SCREWS - 2 PLACES ON TOP
- INSTALL LOWER RADIATOR MOUNT TO RADIATOR AND USE AS A DRILL GUIDE TO DRILL MOUNTING HOLE INTO FACE PLATE (.250 DIA. - STARTER MOTOR SIDE OF FACE PLATE) FOR ANGLE BRACKET. ONLY ONE MOUNT USED ON UNDERSIDE OF RADIATOR.
- OIL COOLER IS TIE STRAPPED TO THE FRONT OF THE RADIATOR (IMPORTANT: IT MUST BE ON THE FRONT OF RADIATOR) W/ CHAFE PROTECTION BETWEEN OIL COOLER AND RADIATOR.
- RADIATOR OVERFLOW BOTTLE IS SECURED BY HOSE CLAMP AND BOLTED TO FACE PLATE.



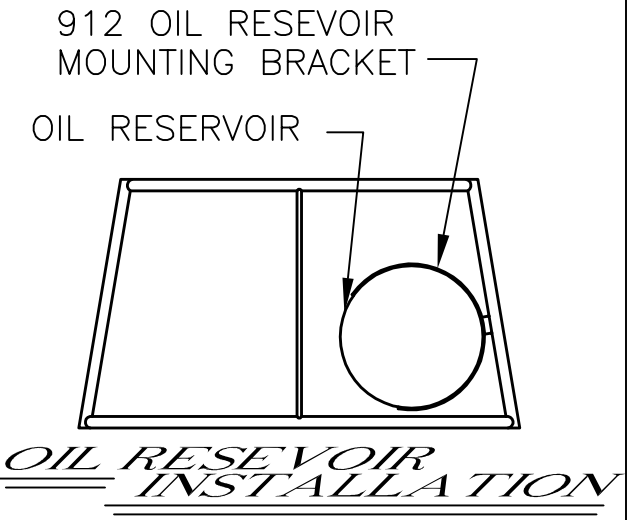
TOP VIEW



FRONT VIEW



SIDE VIEW



SECURE OIL RESEVOIR TO FUSELAGE BRACKET WITH HOSE CLAMP AND CHAFE PROTECTION BETWEEN PARTS

TITAN AIRCRAFT SUPPLY
1419 STATE ROUTE 45 SOUTH
AUSTINBURG, OHIO 44010

DRAWN K. BOHRER		DATE 10/23/97		DETAIL NAME 912 OIL SYSTEM AND RADIATOR INSTALLATION	
CHECKED R. INGLE		DATE 4/18/01		SCALE N/A	PART NO. N/A
APPROVED J. WILLIAMS		DATE 4/18/01		ASSEMBLY NAME 912 ENGINE INSTALLATION	
				PART NO. N/A	DRAWING NO.
				DRAWING NO. B 97-INS-0930-D	