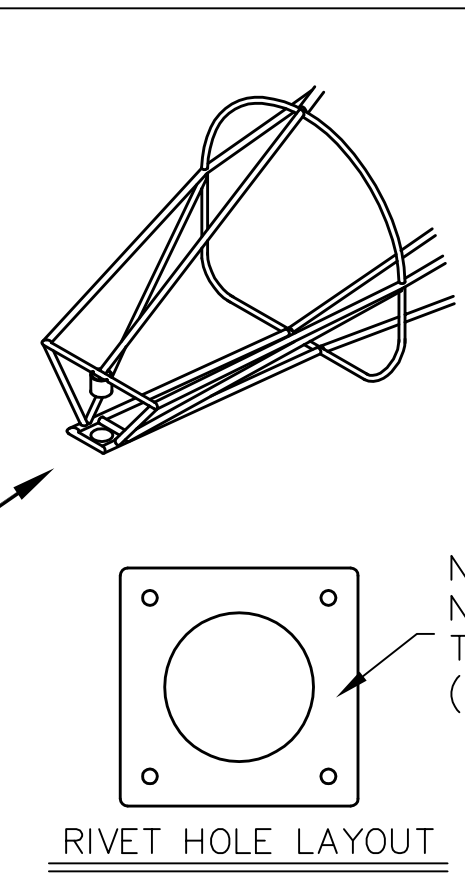
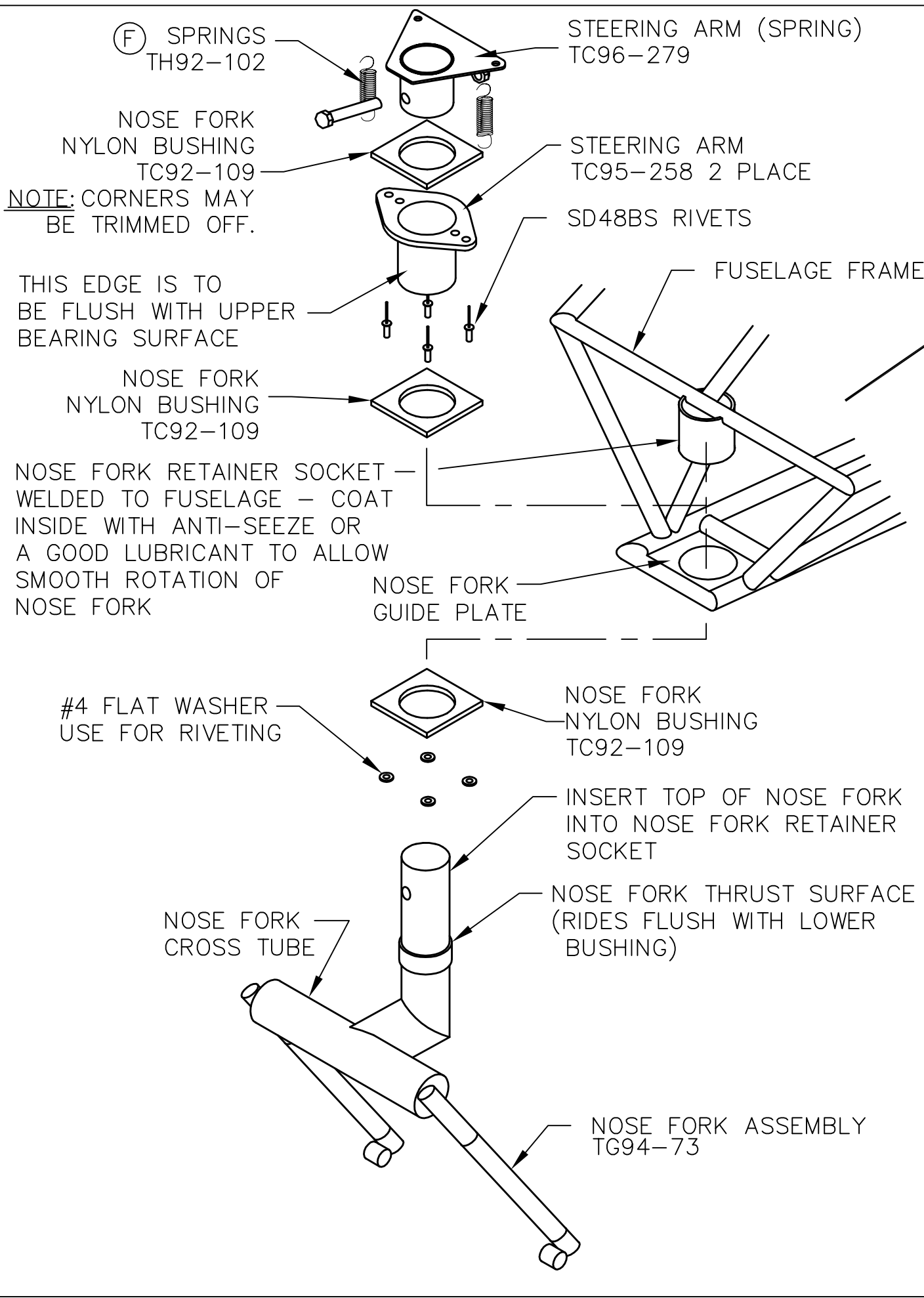


THIS DOCUMENT PROPRIETARY TO TITAN AIRCRAFT, AND IS NOT TO BE USED, CIRCULATED, REPRODUCED, COPIED, OR DISCLOSED IN ANY MANNER WITHOUT PRIOR WRITTEN PERMISSION OF AN AUTHORIZED OFFICIAL OF TITAN AIRCRAFT.



TRIM BUSHINGS TO FIT INTO THE RECESS OF THE FRAME.

ALIGN BUSHINGS SO THAT THE NOSE FORK GUIDE PLATE DOES NOT RUB AGAINST THE NOSE FORK SHAFT. THE NOSE FORK GUIDE PLATE HOLE MAY BE ENLARGED SLIGHTLY FOR THIS.

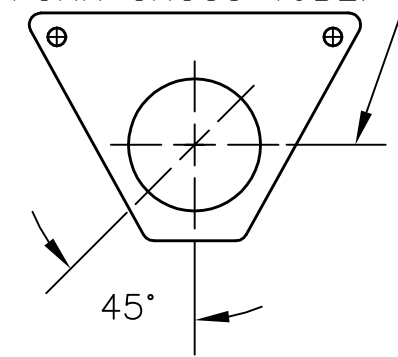
DRILL RIVET HOLES AS SHOWN LEAVING ENOUGH CLEARANCE SO THAT THE NOSE FORK THRUST SURFACE DOES NOT RIDE ON THE RIVET WASHERS.

BUSHING ASSEMBLY NOTES

DRAWN	J. PRESTON	DATE	3/26/92
CHECKED		DATE	
APPROVED		DATE	

REVISIONS				
E.C. NO.	REV.	DESCRIPTION	BY	DATE
2105	D	PART TC96-279 WAS UPDATED	KL	1/03
2132	E	CHANGED THE ASS'Y OF STEERING ARMS	CE	3/04
2146	F	CORRECTED PART NUMBER	CE	5/04


THIS CENTER LINE IS TO RUN PARALLEL WITH THE NOSE FORK CROSS TUBE.



WHEN BOLTING THE NOSE FORK TO THE STEERING ARM, DRILL 1/4" HOLE AT APPROXIMATELY 45° (AS SHOWN) AND HALFWAY UP THE STEERING ARM. THIS ALLOWS EASIER ACCESS TO THE ASSEMBLY AFTER NOSE CONE HAS BEEN INSTALLED.

BOLT WITH AN4-17A BOLT
AN365-428 NUT
(2) AN960-416 WASHERS

NOSE FORK AND STEERING ARM ASSEMBLY NOTES

		TITAN AIRCRAFT SUPPLY 1419 STATE ROUTE 45 SOUTH AUSTINBURG, OHIO 44010	
DETAIL NAME		SPRING CONTROLLED STEERING OPTION	
SCALE	N/A	PART NO.	N/A
ASSEMBLY NAME ALL TORNADO ASSEMBLIES			
PART NO.	N/A	DRAWING NO.	
DRAWING NO.		B 96-INS-0634-F	