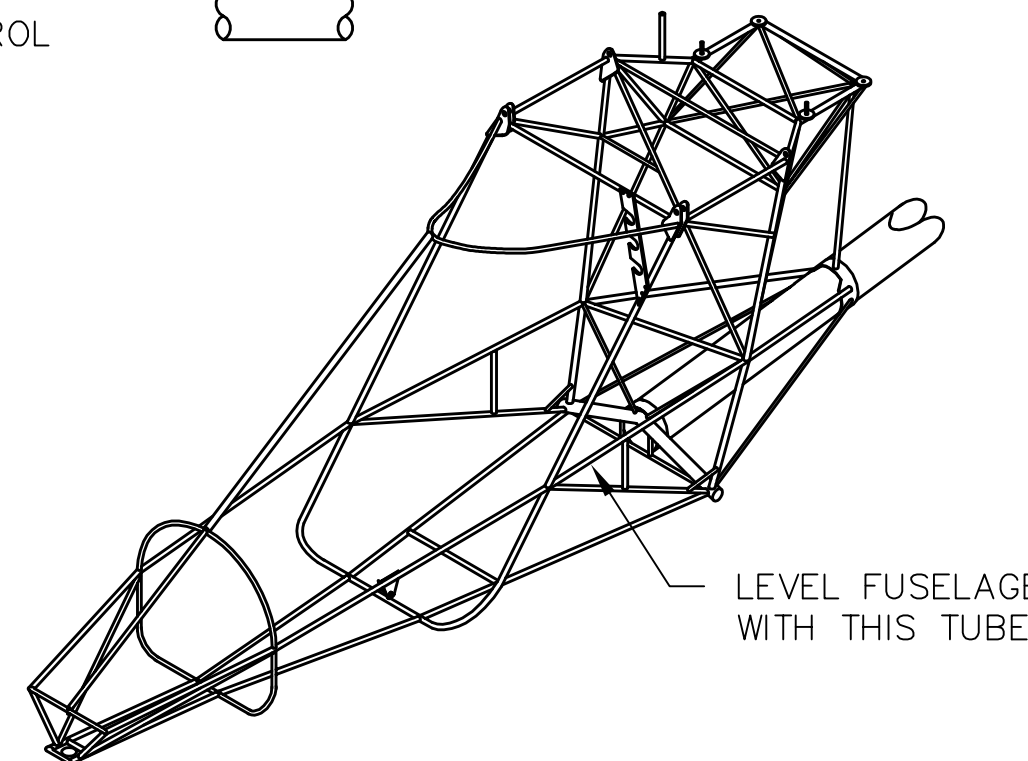
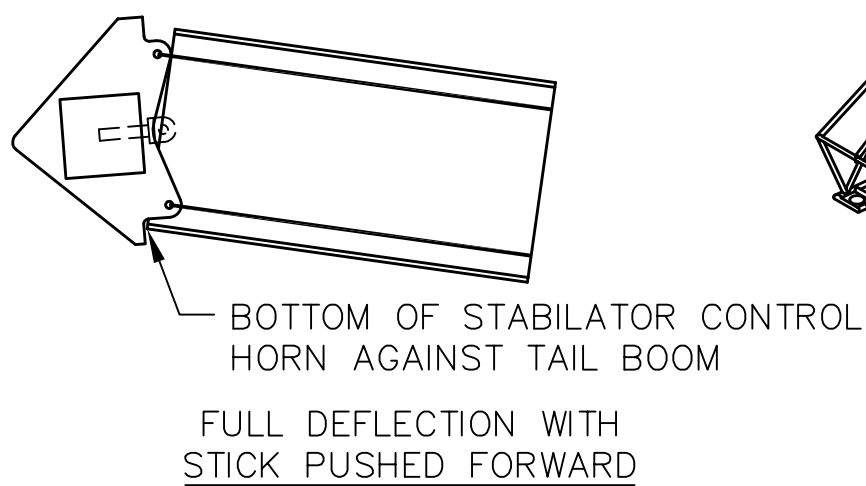
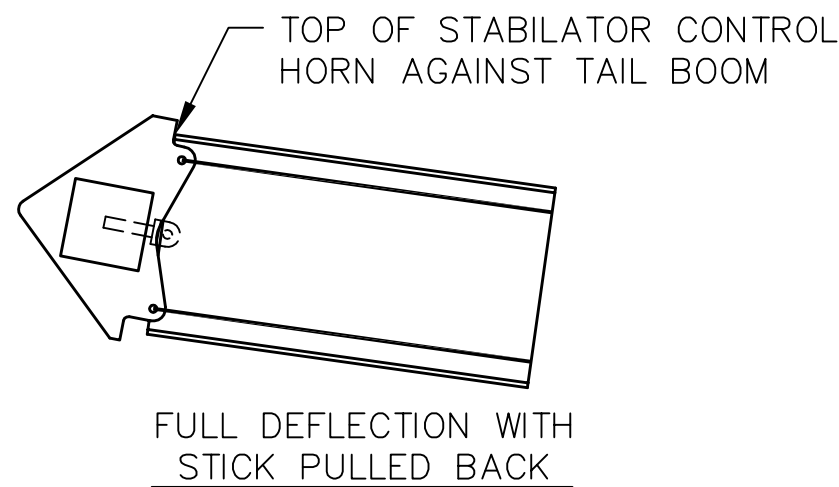
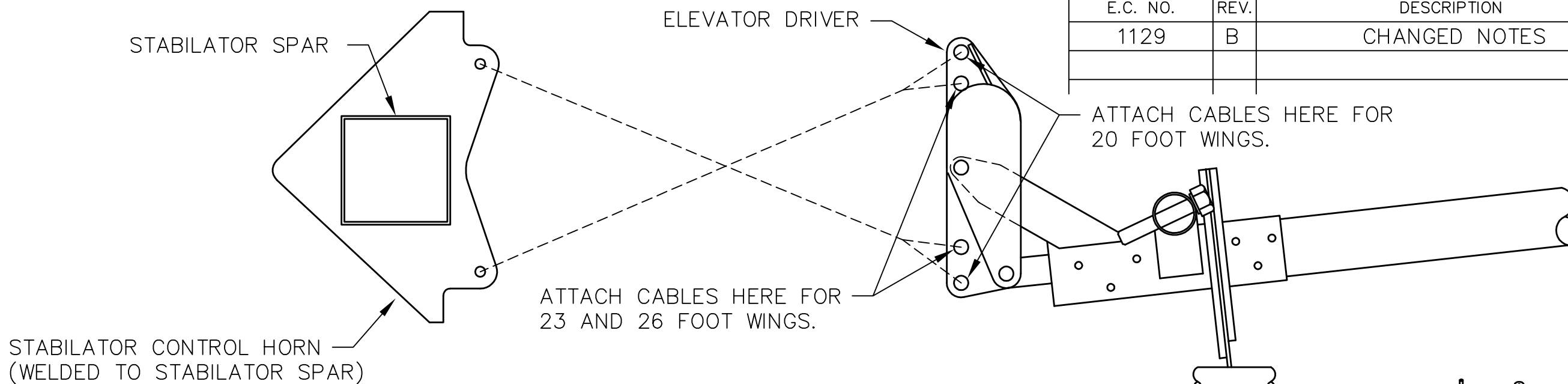


REVISIONS

E.C. NO.	REV.	DESCRIPTION	BY	DATE
1129	B	CHANGED NOTES	K.B.	6/97



NOTES:

- STABILATOR CABLE ATTACHES TO STABILATOR CONTROL HORN WITH THE CLEVIS AND PIN METHOD. SEE DRAWING B92-INS-0192 IN CABLES AND HARDWARE SECTION FOR DETAILS.
- ATTACH CABLES TO THE OUTER HOLES OF THE ELEVATOR DRIVER FOR 20 FOOT WINGS AND THE INNER HOLES FOR 23 AND 26 FOOT WINGS. ATTACH CABLES USING THE CLEVIS AND PIN METHOD.
- FOR CABLE ROUTING REFER TO THESE DRAWINGS: B92-INS-0190 FOR SINGLE PLACE AIRCRAFT B92-INS-0236 FOR TWO PLACE AIRCRAFT.
- TO SET CABLES IN NEUTRAL POSITION, FIRST LEVEL FUSELAGE WITH INDICATED TUBE. NEXT LEVEL THE STABILATOR. FINALLY, ADJUST TURNBUCKLES UNTIL THE CONTROL STICK REACHES THE NEUTRAL POSITION.
- PUSH STICK COMPLETELY FORWARD AND CHECK FOR FULL DEFLECTION.
- PULL STICK COMPLETELY BACK AND CHECK FOR FULL DEFLECTION.

**TITAN AIRCRAFT SUPPLY**  
 1419 STATE ROUTE 45 SOUTH  
 AUSTINBURG, OHIO 44010

DETAIL NAME: STABILATOR CABLE INSTALLATION

SCALE: N/A PART NO.:

ASSEMBLY NAME:

PART NO. DRAWING NO.:

DRAWING NO. **B 92-INS-0260-B**

DRAWN J. PRESTON	DATE 5/17/93
CHECKED B. PASSAFIUME	DATE 7/1/97
APPROVED J. SUTCH	DATE 7/1/97

THIS DOCUMENT PROPRIETARY TO TITAN AIRCRAFT, AND IS NOT TO BE USED, CIRCULATED, REPRODUCED, COPIED, OR DISCLOSED IN ANY MANNER WITHOUT PRIOR WRITTEN PERMISSION OF AN AUTHORIZED OFFICIAL OF TITAN AIRCRAFT.