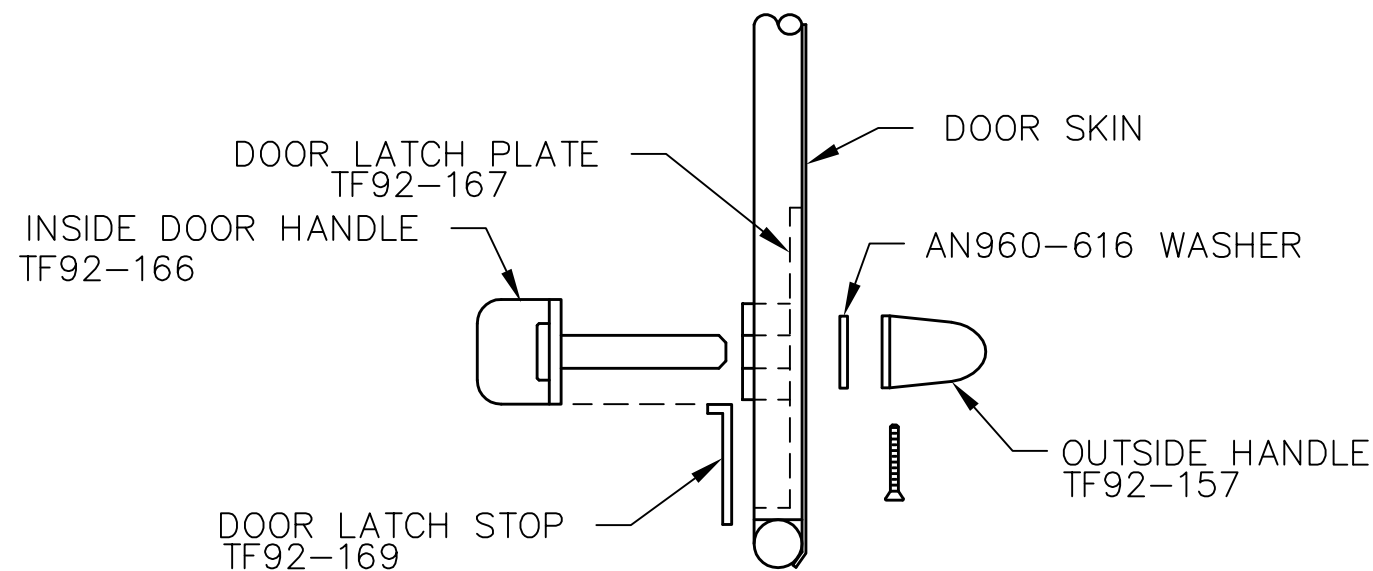
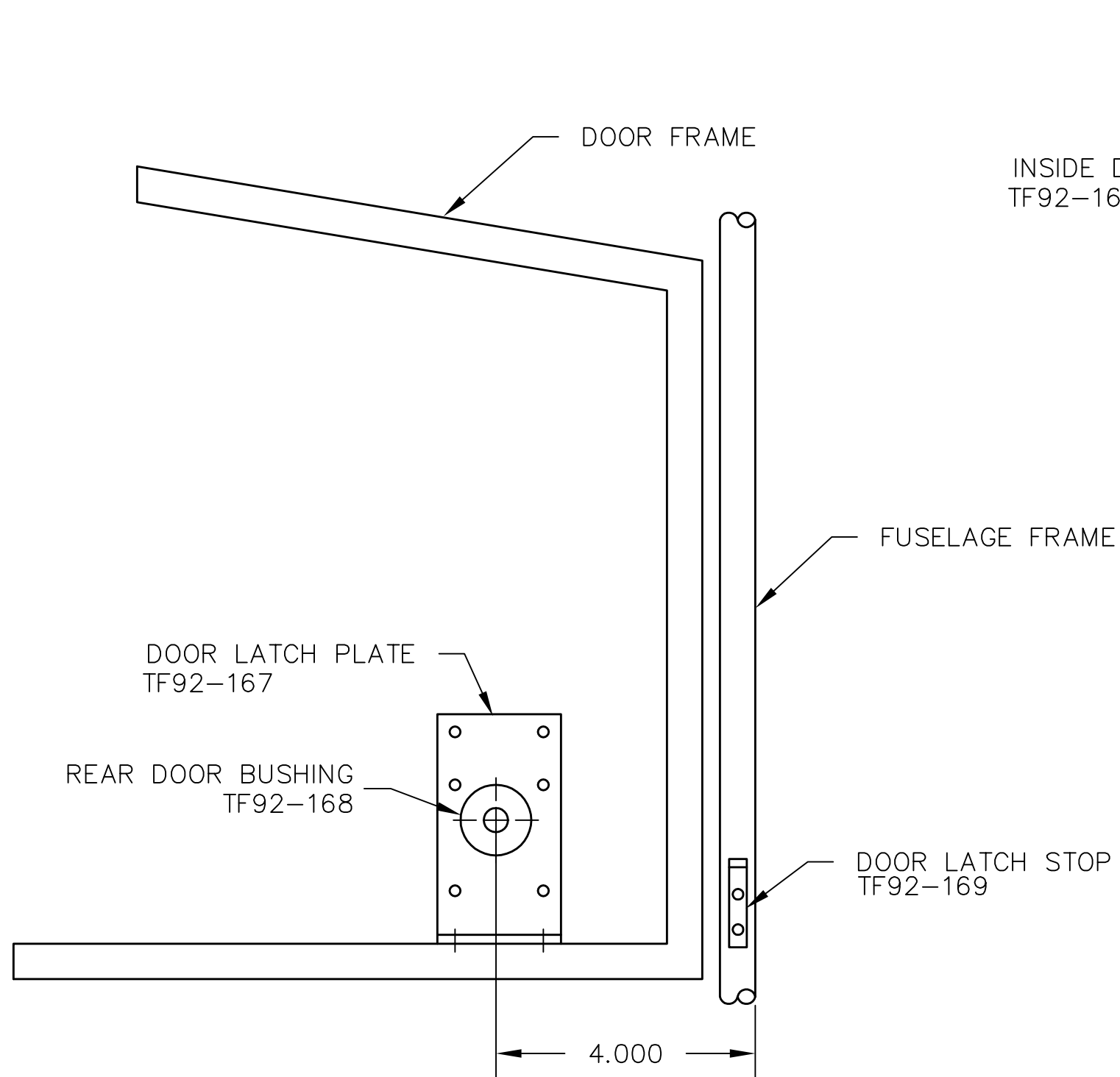


TF92-171
REAR DOOR HANDLE KIT

REVISIONS				
E.C. NO.	REV.	DESCRIPTION	BY	DATE
	B	HANDLE WAS SCREWED FROM TOP	K.B.	10/96
1838	C	ADDED PART NUMBERS	KL	3/01



NOTES:

- POSITION DOOR LATCH PLATE AS SHOWN.
- DRILL (6) #30 DRILL (.1285 DIA.) THRU DOOR LATCH PLATE AND DOOR SKINS. RIVET WITH SD42BS RIVETS. (.125 DIA X .265 LONG) RIVETS SHOULD BE INSERTED FROM THE SKIN SIDE OF DOOR.
- DRILL (2) #30 DRILL (.1285 DIA.) THRU DOOR LATCH PLATE AND DOOR FRAME. RIVET WITH SD43BS RIVETS. (.125 DIA X .328 LONG)
- INSTALL DOOR HANDLES.
- MOUNT THE DOOR LATCH STOP TO PREVENT THE HANDLES FROM ROTATING PAST THE LEVEL POSITION WHILE CLOSING.

TITAN AIRCRAFT SUPPLY
1419 STATE ROUTE 45 SOUTH
AUSTINBURG, OHIO 44010

DETAIL NAME		REAR DOOR LATCH ASSEMBLY	
SCALE	N/A	PART NO.	
ASSEMBLY NAME		ALL TORNADO AIRCRAFT	
PART NO.		DRAWING NO.	
DRAWING NO.		B 92-INS-0243-C	

DRAWN	J. PRESTON	DATE	8/13/92
CHECKED	R. INGLE	DATE	3/1/01
APPROVED	J. WILLIAMS	DATE	3/1/01

THIS DOCUMENT PROPRIETARY TO TITAN AIRCRAFT, AND IS NOT TO BE USED, CIRCULATED, REPRODUCED, COPIED, OR DISCLOSED IN ANY MANNER WITHOUT PRIOR WRITTEN PERMISSION OF AN AUTHORIZED OFFICIAL OF TITAN AIRCRAFT.