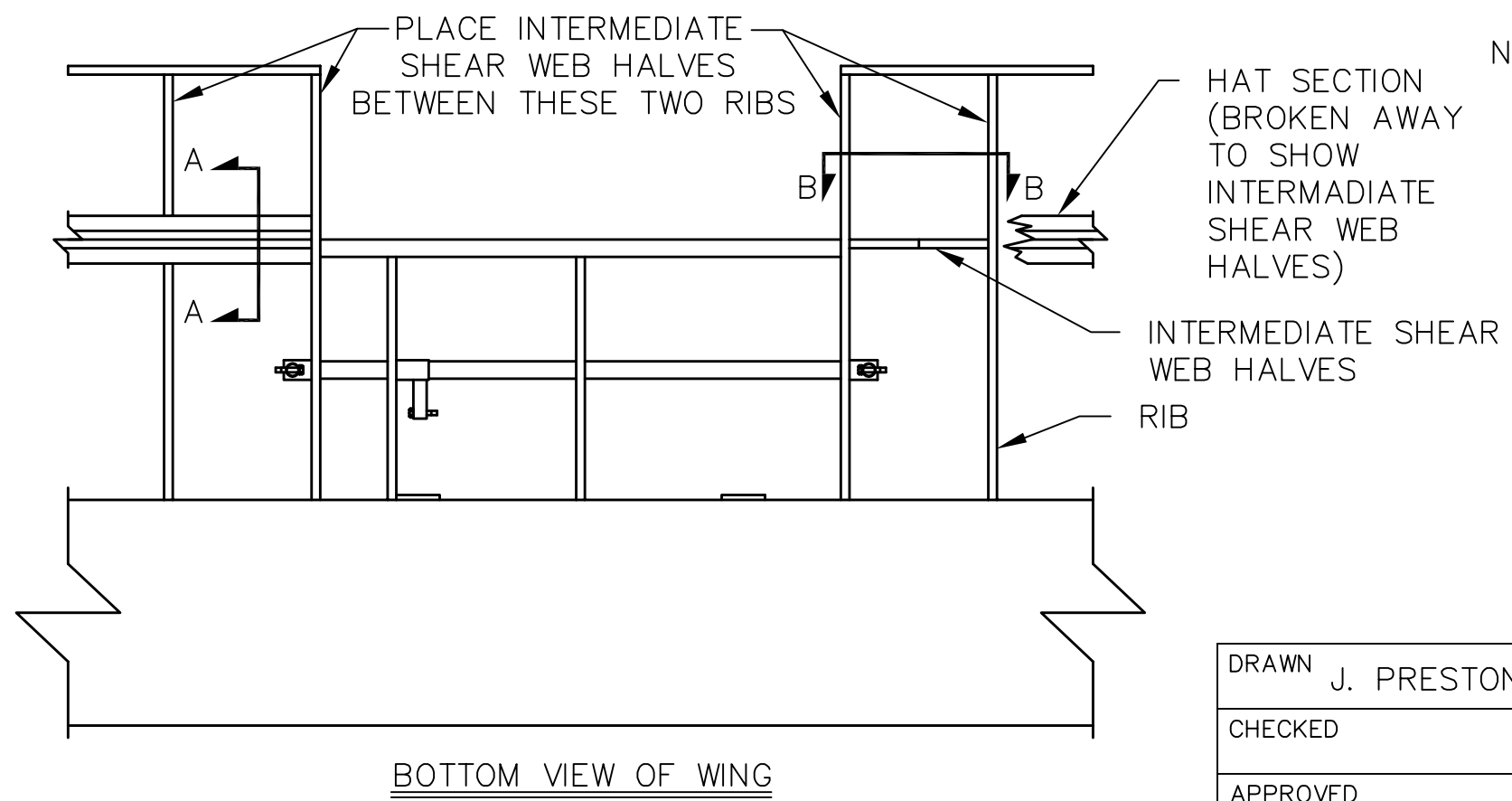
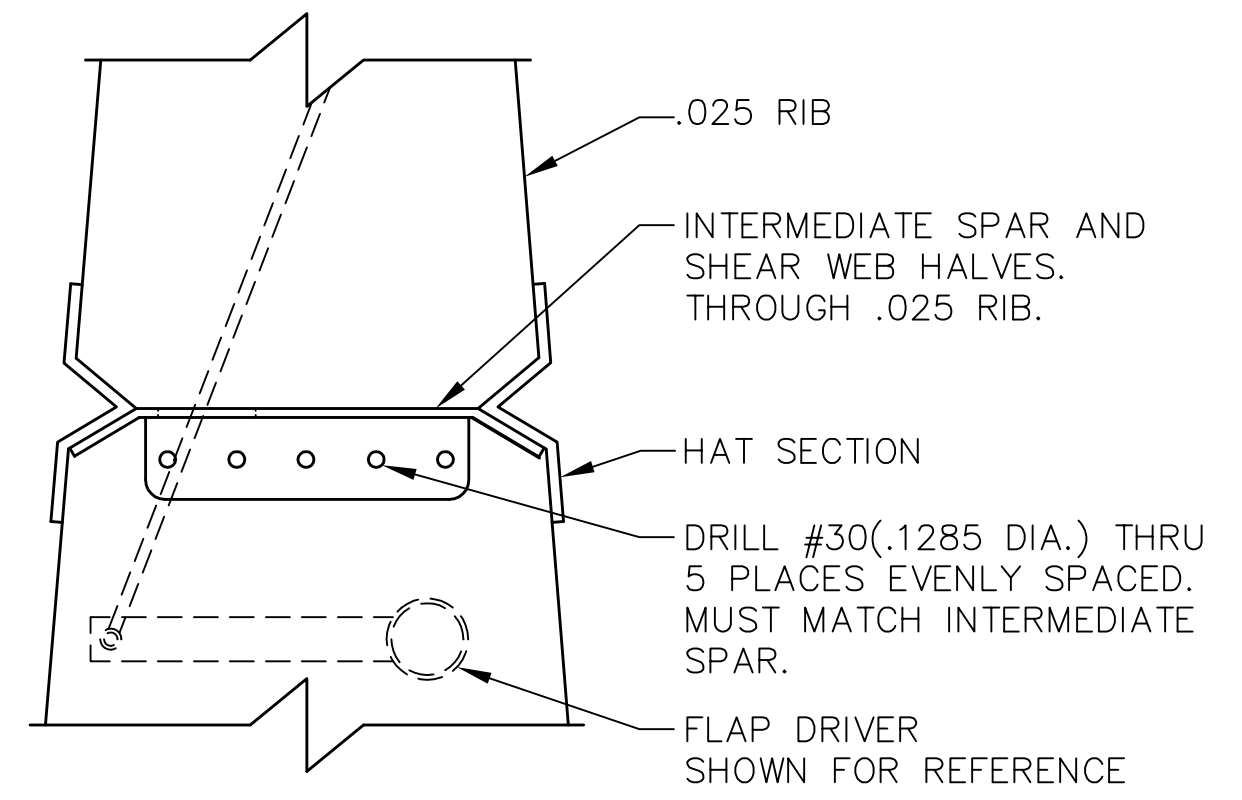
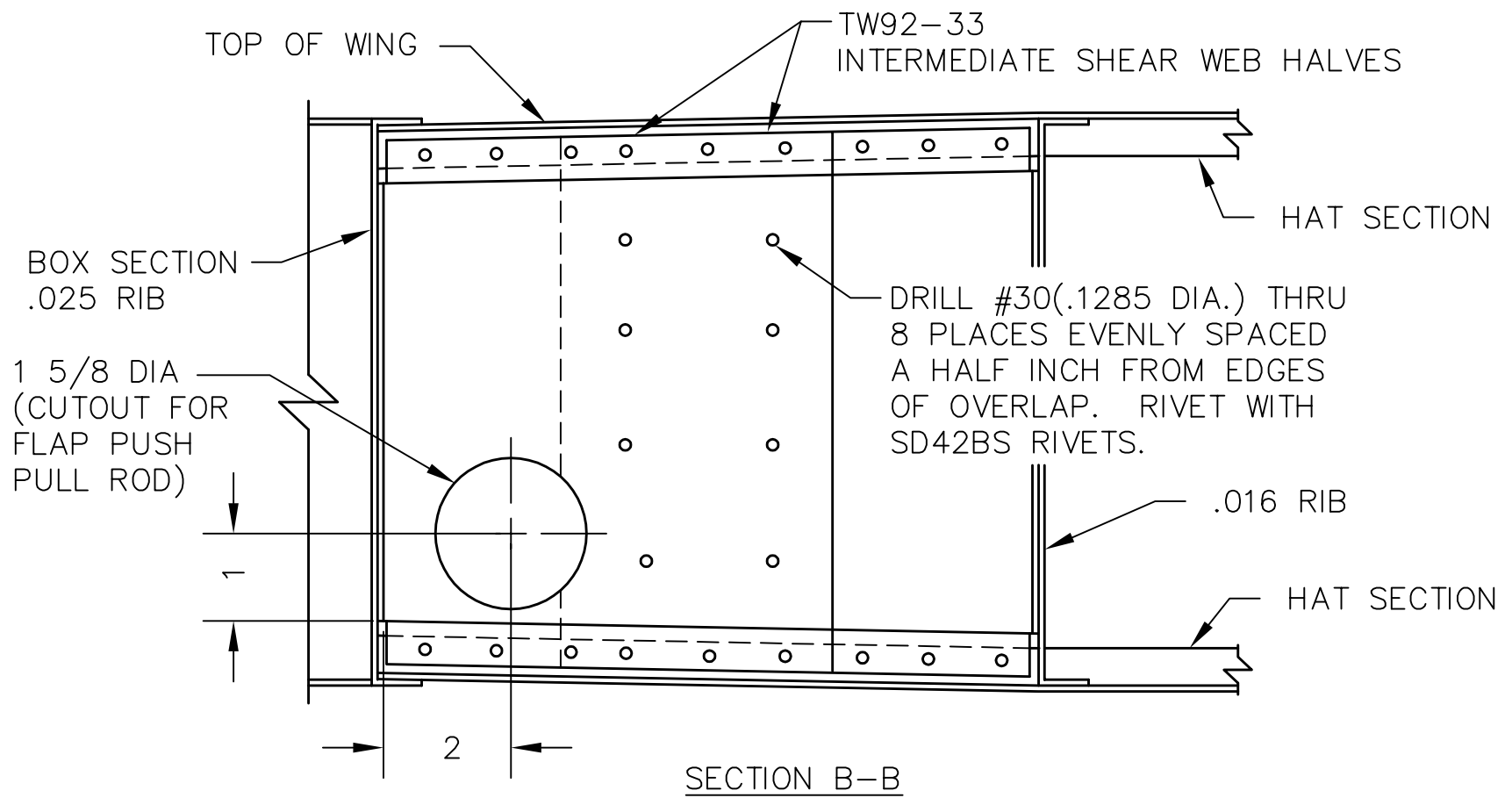


REVISIONS

| E.C. NO. | REV. | DESCRIPTION | BY | DATE |
|----------|------|---------------------------|------|------|
| 1135 | B | SHEAR WEBS WERE SPAR WEBS | K.B. | 7/97 |



NOTES:

- INTERMEDIATE SHEAR WEB HALVES ARE TO BE LOCATED BETWEEN THE SPECIFIED RIBS.
- POSITION TWO WEB HALVES FOR EACH RIB PAIR SUCH THAT THE WEB IS LOCATED ON THE FORWARD SIDE OF THE HAT SECTION, AS SHOWN IN 'SECTION A-A'.
- DRILL 1 5/8 DIA HOLE THRU THE LOWER INSIDE CORNER OF THE INTERMEDIATE SHEAR WEB HALVES AS SHOWN IN 'SECTION B-B'.
- DRILL MOUNTING HOLES WITH #30 DRILL (.1285 DIA) AND RIVET WITH SD42BS RIVETS. (1/8 DIA X 17/64 LONG)

TITAN AIRCRAFT SUPPLY
 1419 STATE ROUTE 45 SOUTH
 AUSTINBURG, OHIO 44010

| | | | |
|---------------|-----|-------------------------------------|--|
| DETAIL NAME | | INTERMEDIATE SHEAR WEB INSTALLATION | |
| SCALE | N/A | PART NO. | |
| ASSEMBLY NAME | | 20 FOOT WING | |
| PART NO. | | DRAWING NO. | |
| DRAWING NO. | | B 92-INS-0199-B | |

| | | | |
|----------|------------|------|---------|
| DRAWN | J. PRESTON | DATE | 1/20/93 |
| CHECKED | | DATE | |
| APPROVED | | DATE | |

THIS DOCUMENT PROPRIETARY TO TITAN AIRCRAFT, AND IS NOT TO BE USED, CIRCULATED, REPRODUCED, COPIED, OR DISCLOSED IN ANY MANNER WITHOUT PRIOR WRITTEN PERMISSION OF AN AUTHORIZED OFFICIAL OF TITAN AIRCRAFT.