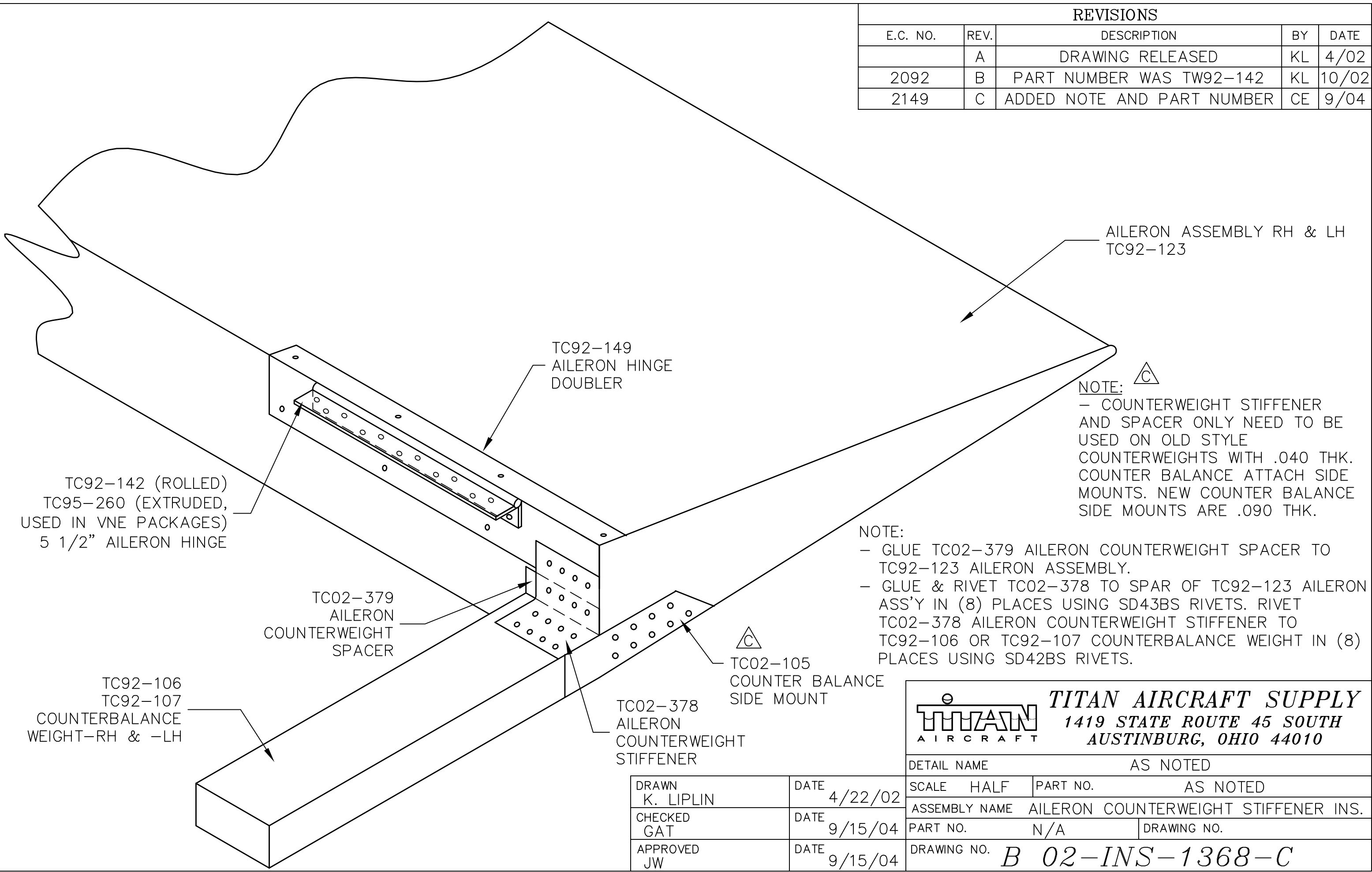


REVISIONS				
E.C. NO.	REV.	DESCRIPTION	BY	DATE
	A	DRAWING RELEASED	KL	4/02
2092	B	PART NUMBER WAS TW92-142	KL	10/02
2149	C	ADDED NOTE AND PART NUMBER	CE	9/04



NOTE: C
 - COUNTERWEIGHT STIFFENER AND SPACER ONLY NEED TO BE USED ON OLD STYLE COUNTERWEIGHTS WITH .040 THK. COUNTER BALANCE ATTACH SIDE MOUNTS. NEW COUNTER BALANCE SIDE MOUNTS ARE .090 THK.

NOTE:
 - GLUE TC02-379 AILERON COUNTERWEIGHT SPACER TO TC92-123 AILERON ASSEMBLY.
 - GLUE & RIVET TC02-378 TO SPAR OF TC92-123 AILERON ASS'Y IN (8) PLACES USING SD43BS RIVETS. RIVET TC02-378 AILERON COUNTERWEIGHT STIFFENER TO TC92-106 OR TC92-107 COUNTERBALANCE WEIGHT IN (8) PLACES USING SD42BS RIVETS.

TITAN AIRCRAFT SUPPLY
 1419 STATE ROUTE 45 SOUTH
 AUSTINBURG, OHIO 44010

DETAIL NAME		AS NOTED	
SCALE	HALF	PART NO.	AS NOTED
ASSEMBLY NAME		AILERON COUNTERWEIGHT STIFFENER INS.	
PART NO.	N/A	DRAWING NO.	
DRAWING NO.		B 02-INS-1368-C	

DRAWN K. LIPLIN	DATE 4/22/02
CHECKED GAT	DATE 9/15/04
APPROVED JW	DATE 9/15/04

THIS DOCUMENT PROPRIETARY TO TITAN AIRCRAFT, AND IS NOT TO BE USED, CIRCULATED, REPRODUCED, COPIED, OR DISCLOSED IN ANY MANNER WITHOUT PRIOR WRITTEN PERMISSION OF AN AUTHORIZED OFFICIAL OF TITAN AIRCRAFT.