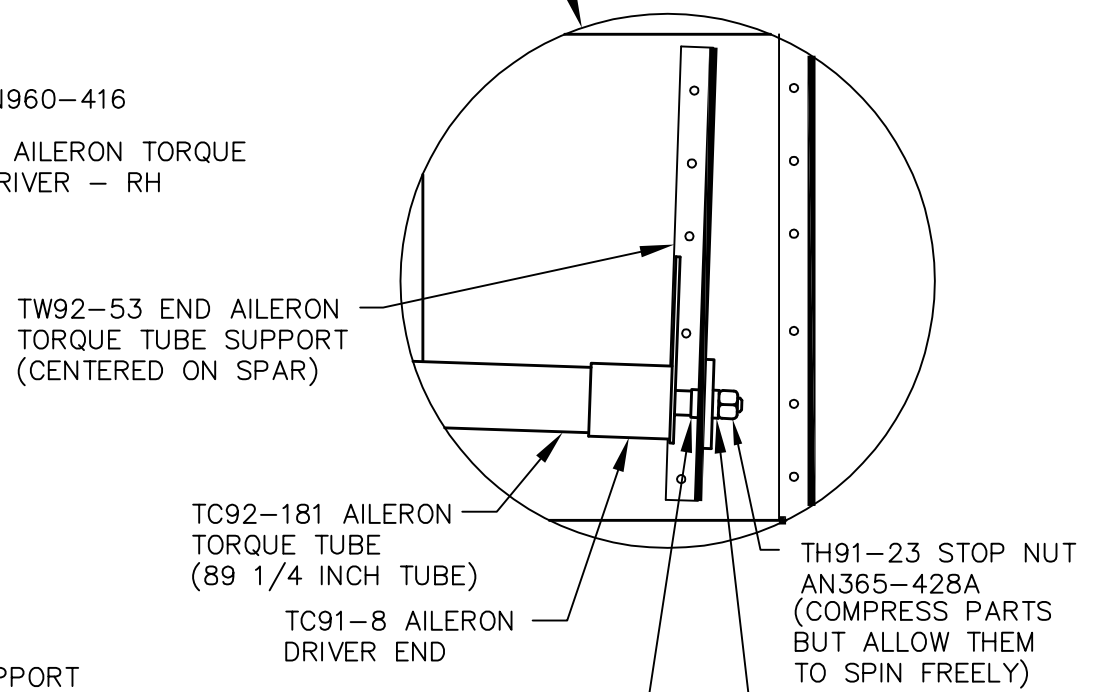
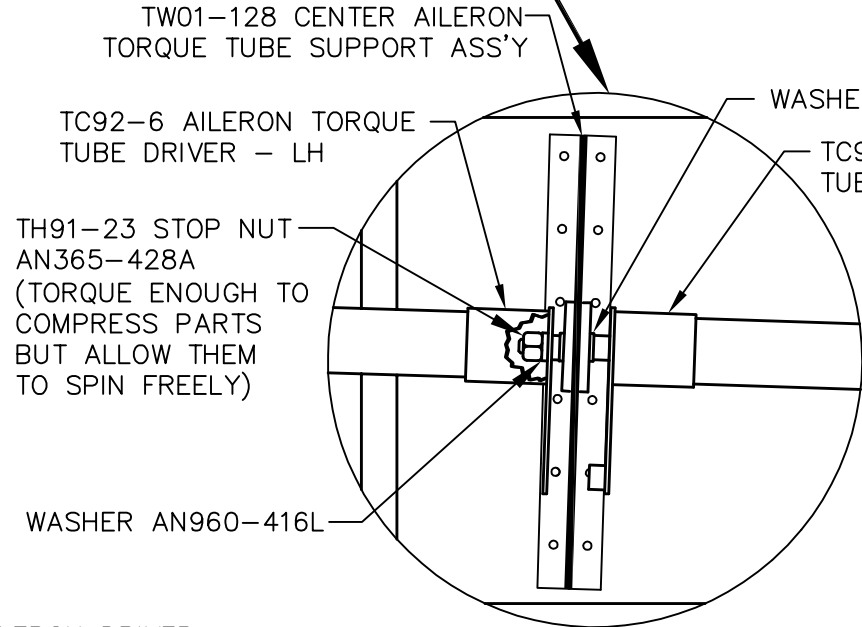
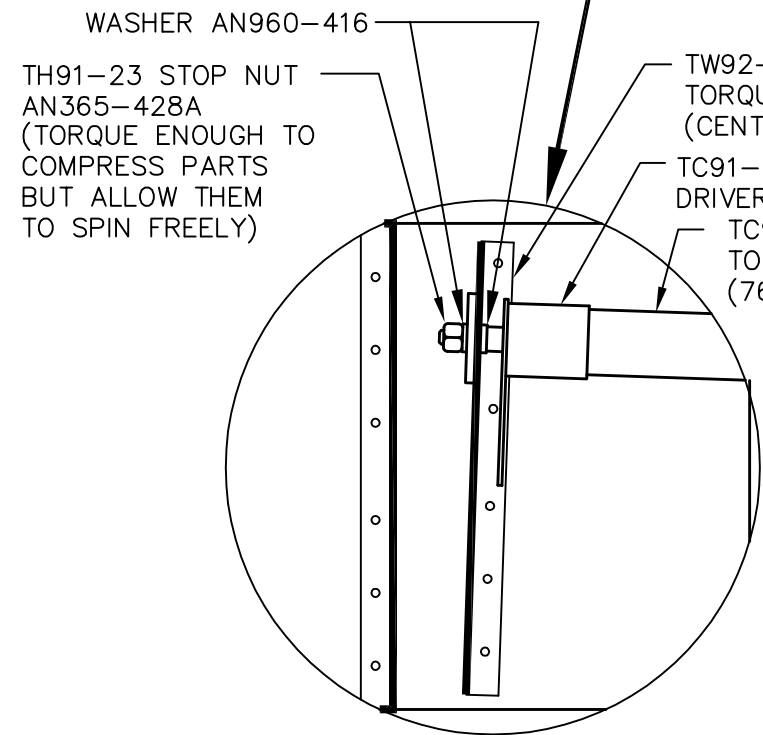
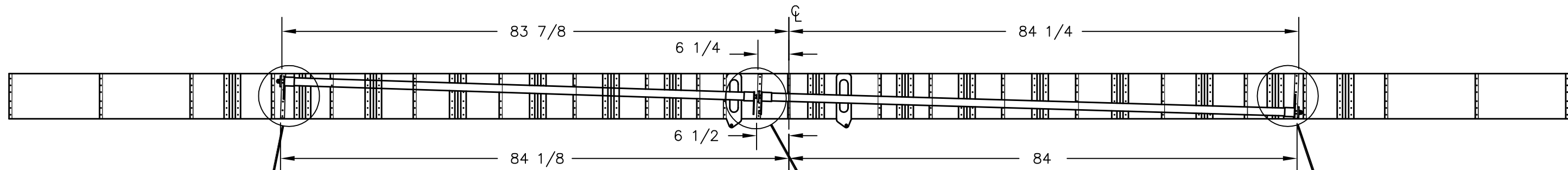


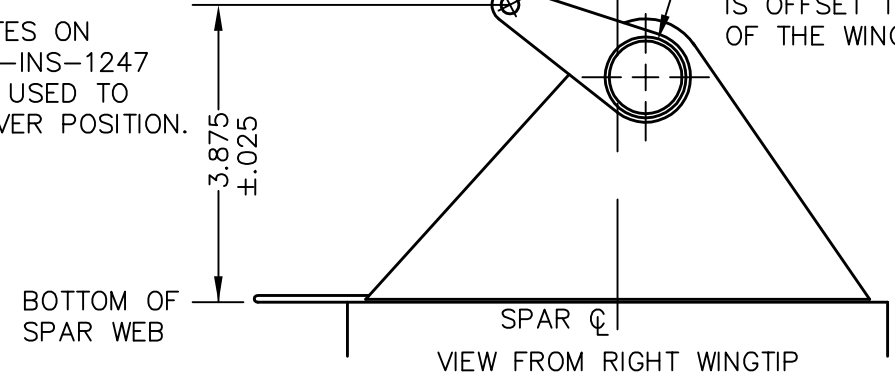
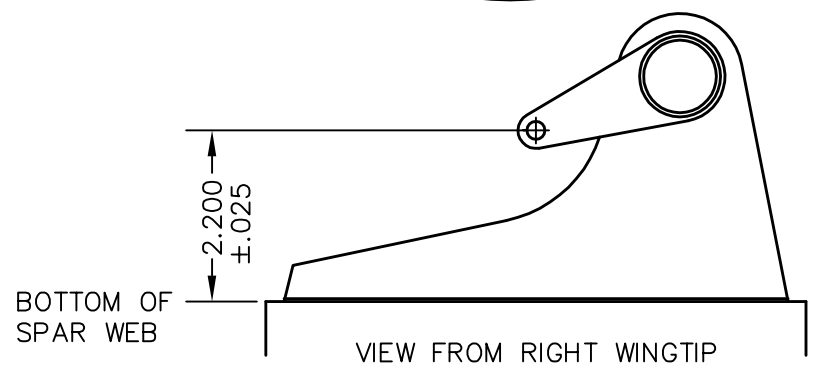
THIS DOCUMENT PROPRIETARY TO TITAN AIRCRAFT, AND IS NOT TO BE USED, CIRCULATED, REPRODUCED, COPIED, OR DISCLOSED IN ANY MANNER WITHOUT PRIOR WRITTEN PERMISSION OF AN AUTHORIZED OFFICIAL OF TITAN AIRCRAFT.



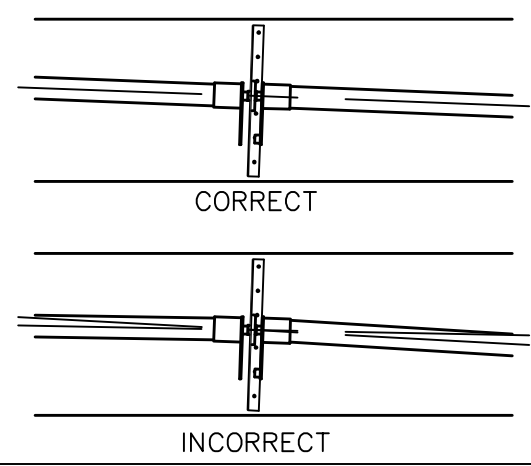
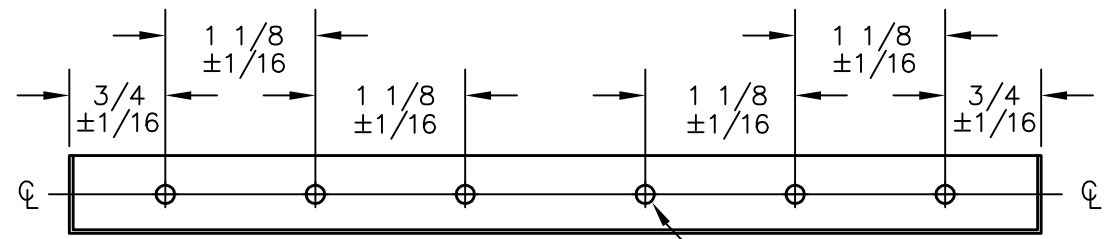
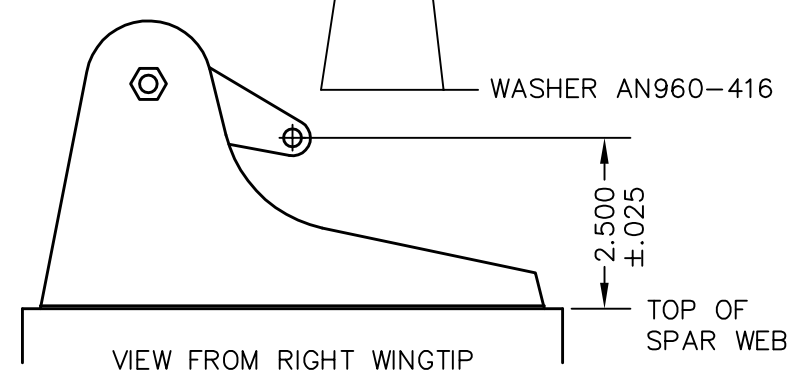
INSURE THE AILERON DRIVER ARM IS OFFSET TOWARD THE BOTTOM OF THE WING, AS SHOWN.

POSITION CENTER SUPPORT SO THAT AILERON TORQUE TUBE IS OFFSET TOWARD THE TOP OF THE WING, AS SHOWN.

TEMPLATES ON DWG. 01-INS-1247 MAY BE USED TO SET DRIVER POSITION.



NOTE:  
AFTER AILERON DRIVERS HAVE BEEN CORRECTLY ALIGNED, DRILL (8) #30 DRILL (.1285 DIA) HOLES, USE EXISTING HOLES IN AILERON DRIVERS AS A GUIDE. RIVET WITH SD43BS RIVETS. (1/8 DIA X 21/64 LONG)



SIGHT DOWN TORQUE TUBES TO INSURE THEY FORM A STRAIGHT LINE. ADJUST CENTER SUPPORT IF NECESSARY.

**\*WARNING\***  
DO NOT DRILL ANY UNSPECIFIED HOLES IN THE SPAR.

MOUNTING HOLE NOTES:  
- RIVET TWO OUTER HOLES WITH SD48BS RIVETS. (1/8 DIA X 41/64 LONG)  
- RIVET FOUR INNER HOLES WITH SD42BS RIVETS. (1/8 DIA X 13/64 LONG)

MOUNTING HOLE DETAILS FOR TORQUE TUBE SUPPORTS

DRAWN K. LIPLIN	DATE 6/12/01
CHECKED G. TRUOX	DATE 7/3/01
APPROVED B. PASSAFIUME	DATE 8/1/01

**TITAN AIRCRAFT SUPPLY**  
1419 STATE ROUTE 45 SOUTH  
AUSTINBURG, OHIO 44010

DETAIL NAME AILERON CONTROL SYSTEM LAYOUT	PART NO.
SCALE N/A	ASSEMBLY NAME TORNADO S & SS W/ 23.5' WING
PART NO.	DRAWING NO.
DRAWING NO. <b>B 01-INS-1245-A</b>	