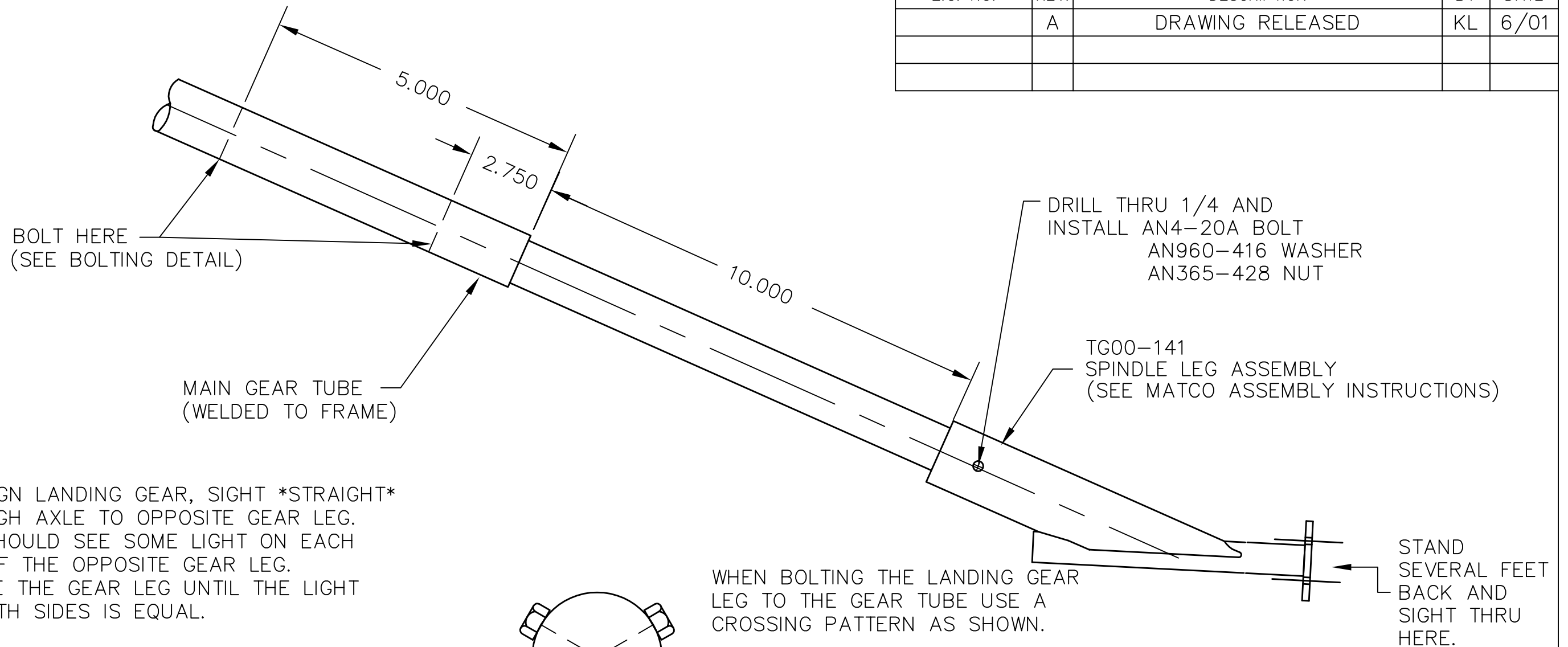
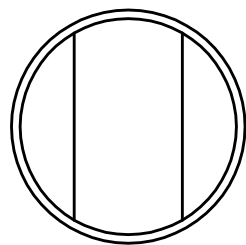


REVISIONS				
E.C. NO.	REV.	DESCRIPTION	BY	DATE
	A	DRAWING RELEASED	KL	6/01

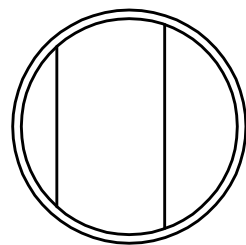


TO ALIGN LANDING GEAR, SIGHT *STRAIGHT* THROUGH AXLE TO OPPOSITE GEAR LEG. YOU SHOULD SEE SOME LIGHT ON EACH SIDE OF THE OPPOSITE GEAR LEG. ROTATE THE GEAR LEG UNTIL THE LIGHT ON BOTH SIDES IS EQUAL.

REPEAT FOR OTHER SIDE.

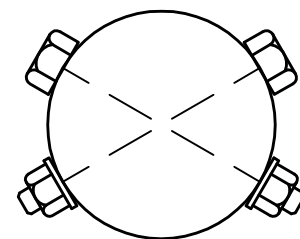


CORRECT ALIGNMENT
OPPOSITE GEAR LEG IS
CENTERED (LIGHT EQUAL)



INCORRECT ALIGNMENT
OPPOSITE GEAR LEG IS NOT
CENTERED (LIGHT NOT EQUAL)

LANDING GEAR ALIGNMENT



BOLTING DETAIL

WHEN BOLTING THE LANDING GEAR LEG TO THE GEAR TUBE USE A CROSSING PATTERN AS SHOWN.

BOLT W/ AN3-20A BOLTS
(2) AN365-1032 NUTS,
(2) AN960-10 WASHERS

TITAN AIRCRAFT SUPPLY

1419 STATE ROUTE 45 SOUTH
AUSTINBURG, OHIO 44010

DETAIL NAME		GEAR LEG ASSEMBLY	
SCALE	N/A	PART NO.	
ASSEMBLY NAME		TORNADO S	
PART NO.		DRAWING NO.	
DRAWING NO.		B 01-INS-1243-A	

DRAWN K. LIPLIN	DATE 6/12/01
CHECKED G. TRUEX	DATE 8/9/01
APPROVED B. PASSAFIUME	DATE 8/9/01

THIS DOCUMENT PROPRIETARY TO TITAN AIRCRAFT, AND IS NOT TO BE USED, CIRCULATED, REPRODUCED, COPIED, OR DISCLOSED IN ANY MANNER WITHOUT PRIOR WRITTEN PERMISSION OF AN AUTHORIZED OFFICIAL OF TITAN AIRCRAFT.