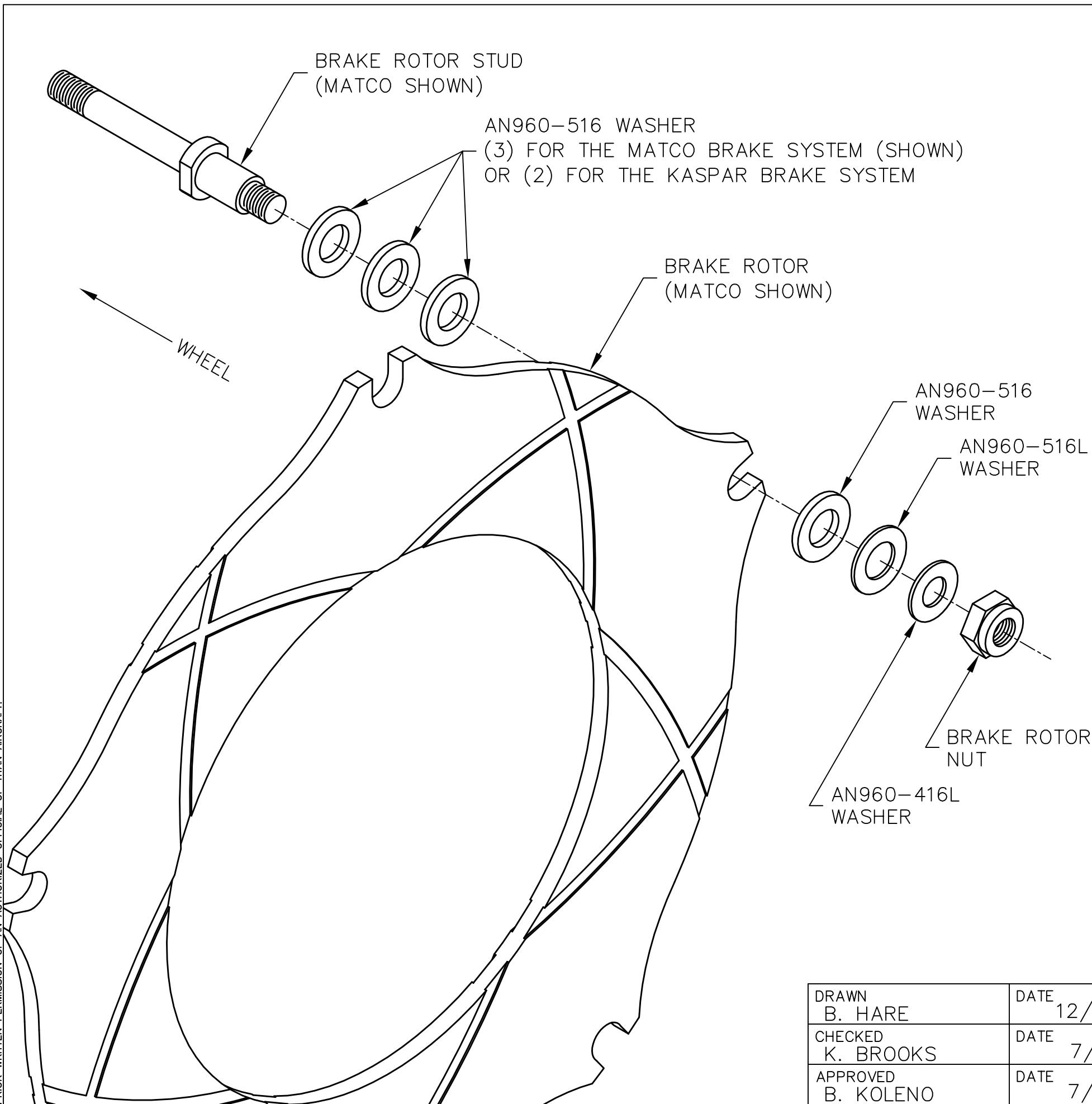


THIS DOCUMENT PROPRIETARY TO TITAN AIRCRAFT, AND IS NOT TO BE USED, CIRCULATED, REPRODUCED, COPIED, OR DISCLOSED IN ANY MANNER WITHOUT PRIOR WRITTEN PERMISSION OF AN AUTHORIZED OFFICIAL OF TITAN AIRCRAFT.



REVISIONS				
E.C. NO.	REV.	DESCRIPTION	BY	DATE
	A	DRAWING RELEASED	BH	12/10

- NOTES:**
- PUT AIRCRAFT UP ON JACKSTANDS.
  - REMOVE THE COTTER PIN AND CASTLE NUT THAT SECURE THE WHEEL TO THE MAIN GEAR AXLE.
  - REMOVE THE (2) BOLTS THAT ATTACH THE BRAKE CALIPER TO THE MAIN GEAR LEG.
  - SLIDE WHEEL OFF AXLE AND SET IT ON A FLAT AREA TO WORK.
  - REMOVE THE BRAKE CALIPER ASSEMBLY.
  - REMOVE THE (5) BRAKE ROTOR NUTS.
  - REMOVE BRAKE ROTOR.
  - IF YOU HAVE THE MATCO BRAKE SYSTEM, STACK (3) AN960-516 WASHERS ON EACH BRAKE ROTOR STUD.
  - IF YOU HAVE THE KASPAR BRAKE SYSTEM, STACK (2) AN960-516 WASHERS ON EACH BRAKE ROTOR STUD.
  - REINSTALL BRAKE ROTOR.
  - STACK (1) AN960-516 WASHER, (1) AN960-516L WASHER, AND (1) AN960-416L WASHER.
  - REINSTALL THE (5) BRAKE ROTOR NUTS.
  - REINSTALL THE BRAKE CALIPER ASSEMBLY.
  - SLIDE THE WHEEL BACK ONTO THE MAIN GEAR AXLE.
  - REINSTALL THE BRAKE CALIPER TO GEAR LEG BOLTS.
  - REINSTALL THE CASTLE NUT AND USE A NEW COTTER PIN TO SECURE.
  - REPEAT FOR THE OTHER SIDE.


**TITAN AIRCRAFT SUPPLY**  
 1419 STATE ROUTE 45 SOUTH  
 AUSTINBURG, OHIO 44010

DRAWN B. HARE		DATE 12/16/10	DETAIL NAME NON-FLOATING BRAKE ROTOR RETROFIT	
CHECKED K. BROOKS		DATE 7/11/11	SCALE N/A	PART NO.
APPROVED B. KOLENO		DATE 7/19/11	ASSEMBLY NAME	
			PART NO.	DRAWING NO. S22
			DRAWING NO. <b>B T51-10-INS-1936-A</b>	