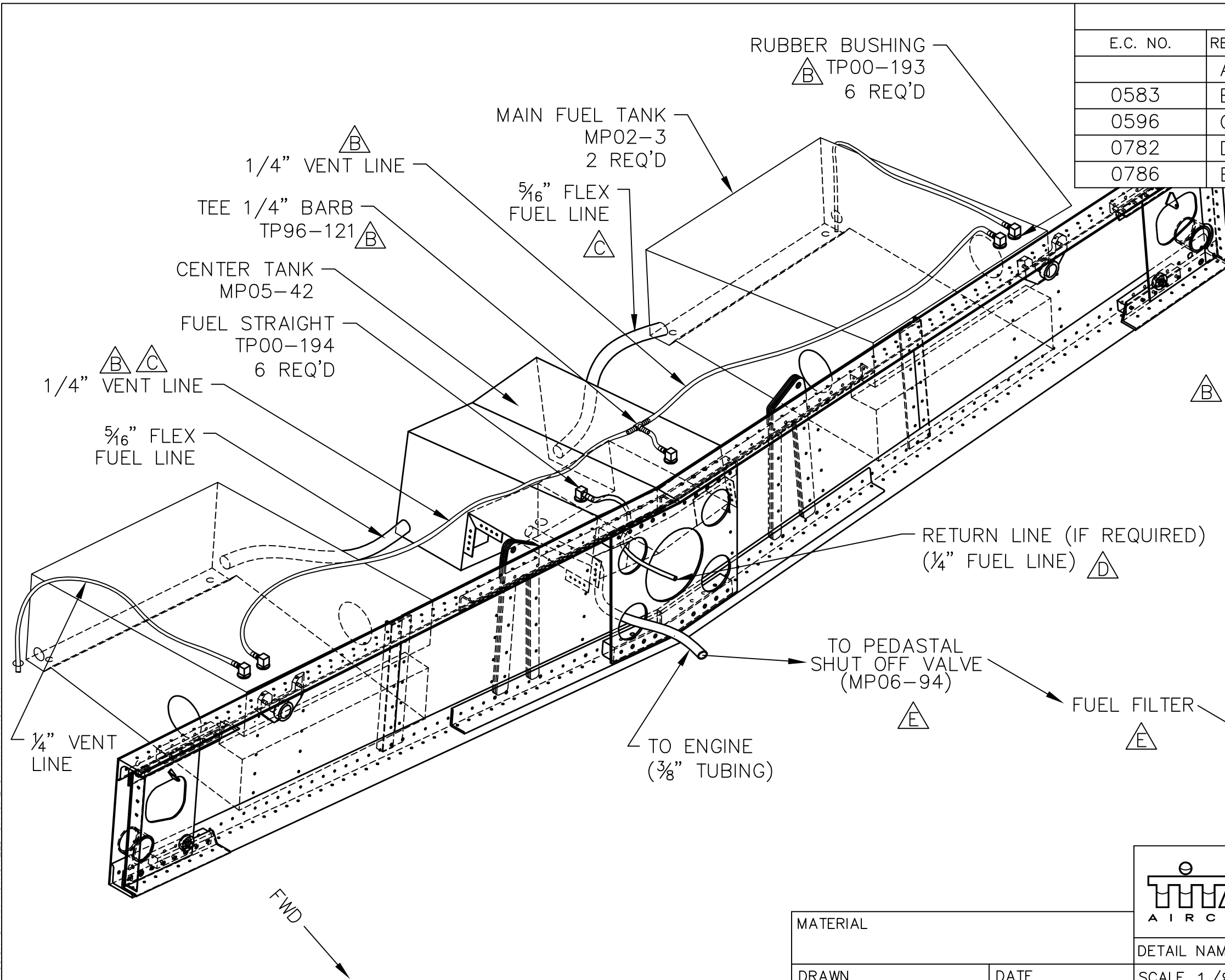


THIS DOCUMENT PROPRIETARY TO TITAN AIRCRAFT, AND IS NOT TO BE USED, CIRCULATED, REPRODUCED, COPIED, OR DISCLOSED IN ANY MANNER WITHOUT PRIOR WRITTEN PERMISSION OF AN AUTHORIZED OFFICIAL OF TITAN AIRCRAFT.



REVISIONS				
E.C. NO.	REV.	DESCRIPTION	BY	DATE
	A	DRAWING RELEASED	SH	5/07
0583	B	HARDWARE CHANGED	SH	12/07
0596	C	VENT LINES CORRECTED	SH	1/08
0782	D	VENT LINES CORRECTED	SH	10/08
0786	E	LINE ROUTING COMPLETED	SH	10/08

NOTES:
 - REFER TO DRAWING T51-03-INS-0611 FOR THE MAIN FUEL TANK (MP02-3) PLUMBING INSTRUCTIONS. ALSO REFER TO DRAWING T51-05-INS-1156 FOR THE CENTER TANK INSTALLATION.
 - BE SURE TO SECURE FUEL LINES IN PLACE WITH HOSE CLAMPS OR WIRE TIES.
 - THE FUEL TANKS ARE ALL VENTED TO ONE ANOTHER, DOING SO ENSURES THAT EACH TANK HAS THE SAME PRESSURE & ANY OVER FLOW CAN BE TRANSFERRED TO ANOTHER TANK INSTEAD OF GOING TO WASTE.
 - THE MAIN WING TANKS ARE THEN VENTED OUT OF THE CENTER SECTION.

FWD →

TITAN AIRCRAFT SUPPLY
 1419 STATE ROUTE 45 SOUTH
 AUSTINBURG, OHIO 44010

MATERIAL		DETAIL NAME CENTER/MAIN FUEL TANKS LINE ROUTING	
DRAWN S. HENDERSON	DATE 5/9/07	SCALE 1/8"=1"	PART NO.
CHECKED JW	DATE 10/17/08	ASSEMBLY NAME	
APPROVED KORY B.	DATE 11/17/08	PART NO.	DRAWING NO.
		DRAWING NO. B T51-07-INS-1631-E	