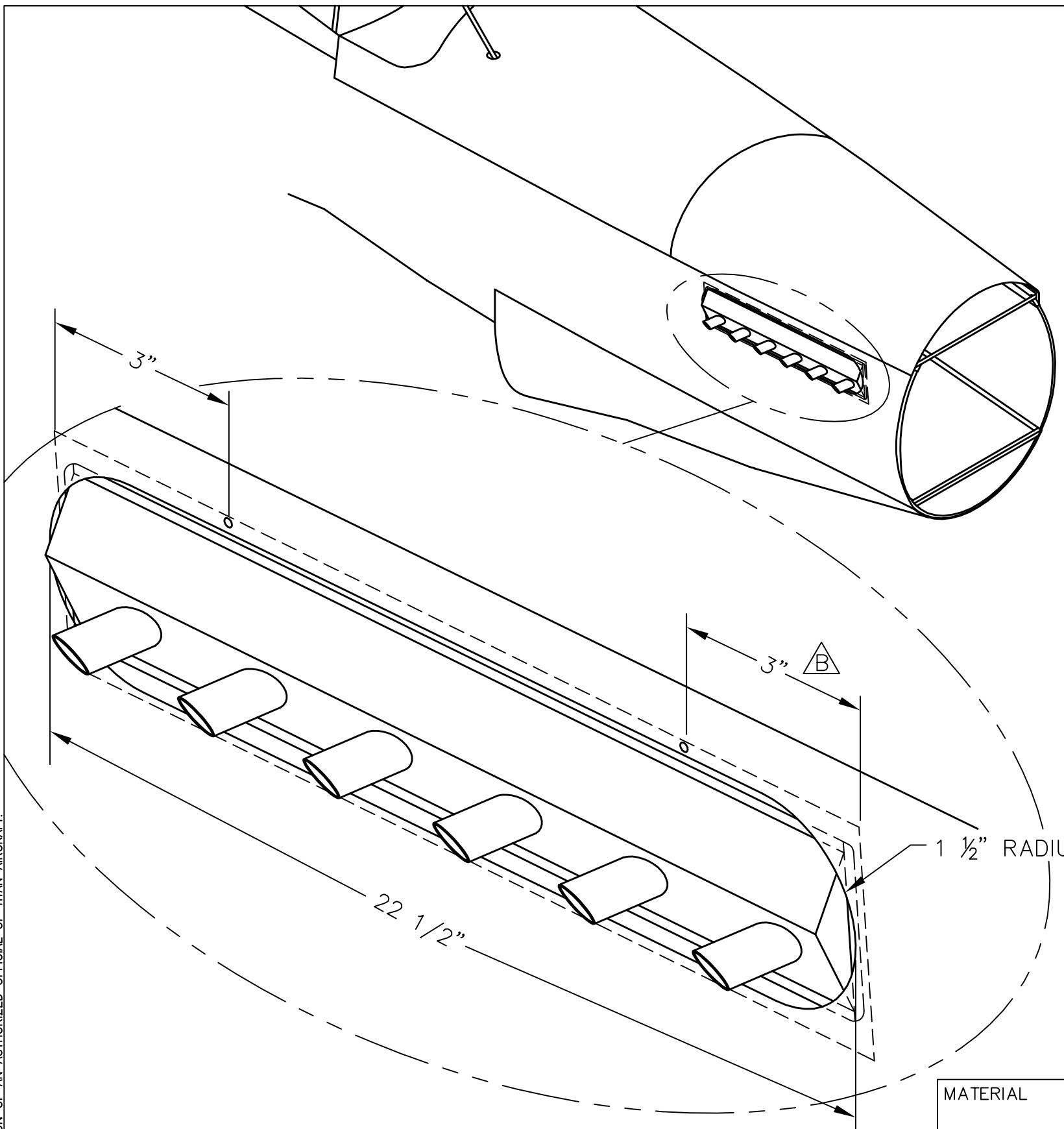


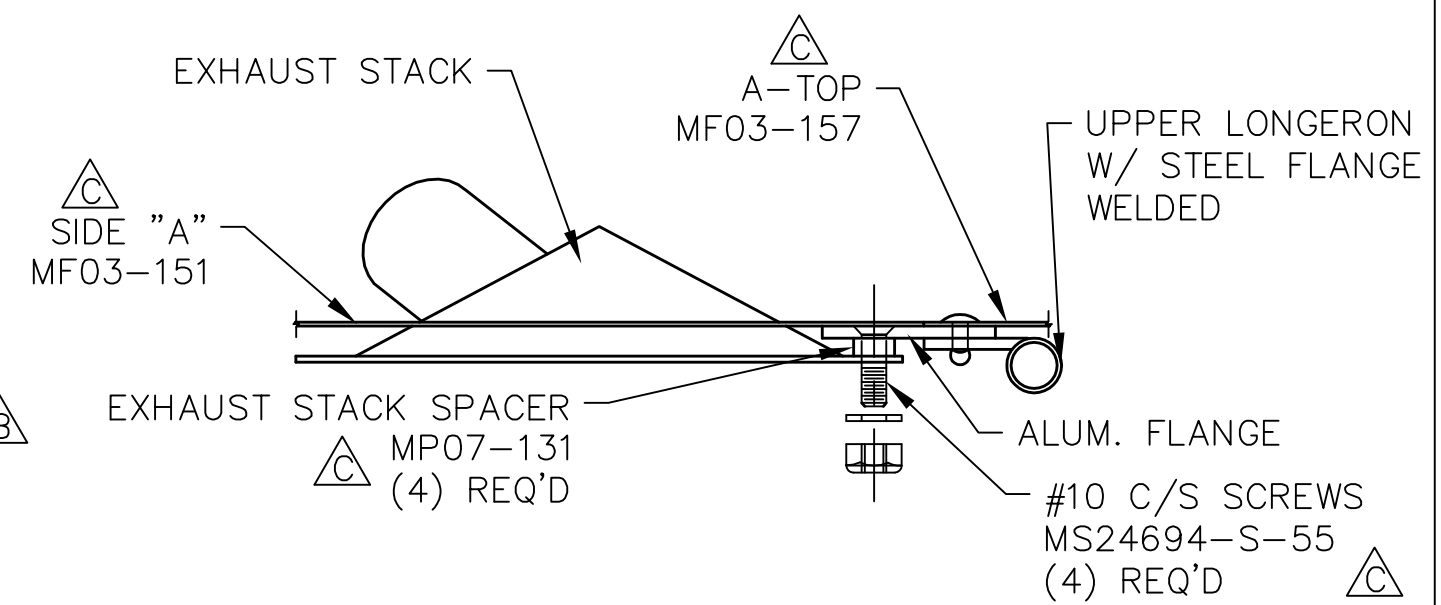
THIS DOCUMENT PROPRIETARY TO TITAN AIRCRAFT, AND IS NOT TO BE USED, CIRCULATED, REPRODUCED, COPIED, OR DISCLOSED IN ANY MANNER WITHOUT PRIOR WRITTEN PERMISSION OF AN AUTHORIZED OFFICIAL OF TITAN AIRCRAFT.




REVISIONS				
E.C. NO.	REV.	DESCRIPTION	BY	DATE
	A	DRAWING RELEASED	SH	6/06
0432	B	DIMS. CHANGED	SH	3/07
0535	C	NOTES ADDED	SH	10/07

NOTE:

- (THIS IS ONLY FOR EARLY MUSTANG FUSELAGES WITH LONGERON EXTENSIONS.) BE SURE MUFFLER & EXHAUST PIPES ARE INSTALLED.
- THE EXHAUST MANIFOLD IS MOUNTED TO THE METAL FLANGE WELDED TO THE UPPER LONGERON EXTENSION, APPROX. 3" IN FROM EACH END. (ONLY THE TOP FLANGE OF MANIFOLDS ARE ANCHORED DOWN.)
- USE (2) #10 COUNTERSUNK SCREWS, (2) 3/8" ALUMINUM SPACERS (MP07-131), AND (2) METAL LOCKNUTS TO ATTACH THE MANIFOLD. (USING THE 3/8" SPACERS TO SPACE THE MANIFOLDS IN, AWAY FROM THE FLANGE ALLOWS HOT AIR IN THE ENGINE COMPARTMENT TO ESCAPE.)
- THE CUT OUT IN THE REMOVABLE SIDE PANEL IS 1 1/2" RADIUS WIDE AND 22 1/2" LONG.



MATERIAL		AS NOTED
DRAWN	S. HENDERSON	DATE 6/15/06
CHECKED	R. INGLE	DATE 1/25/10
APPROVED	K. BROOKS	DATE 1/26/10



TITAN AIRCRAFT

TITAN AIRCRAFT SUPPLY
 1419 STATE ROUTE 45 SOUTH
 AUSTINBURG, OHIO 44010

DETAIL NAME 912/914 EXHAUST MANIFOLD INSTALLATION	
SCALE N/A	PART NO.
ASSEMBLY NAME	
PART NO.	DRAWING NO. S9
DRAWING NO. B T51-06-INS-1433-C	