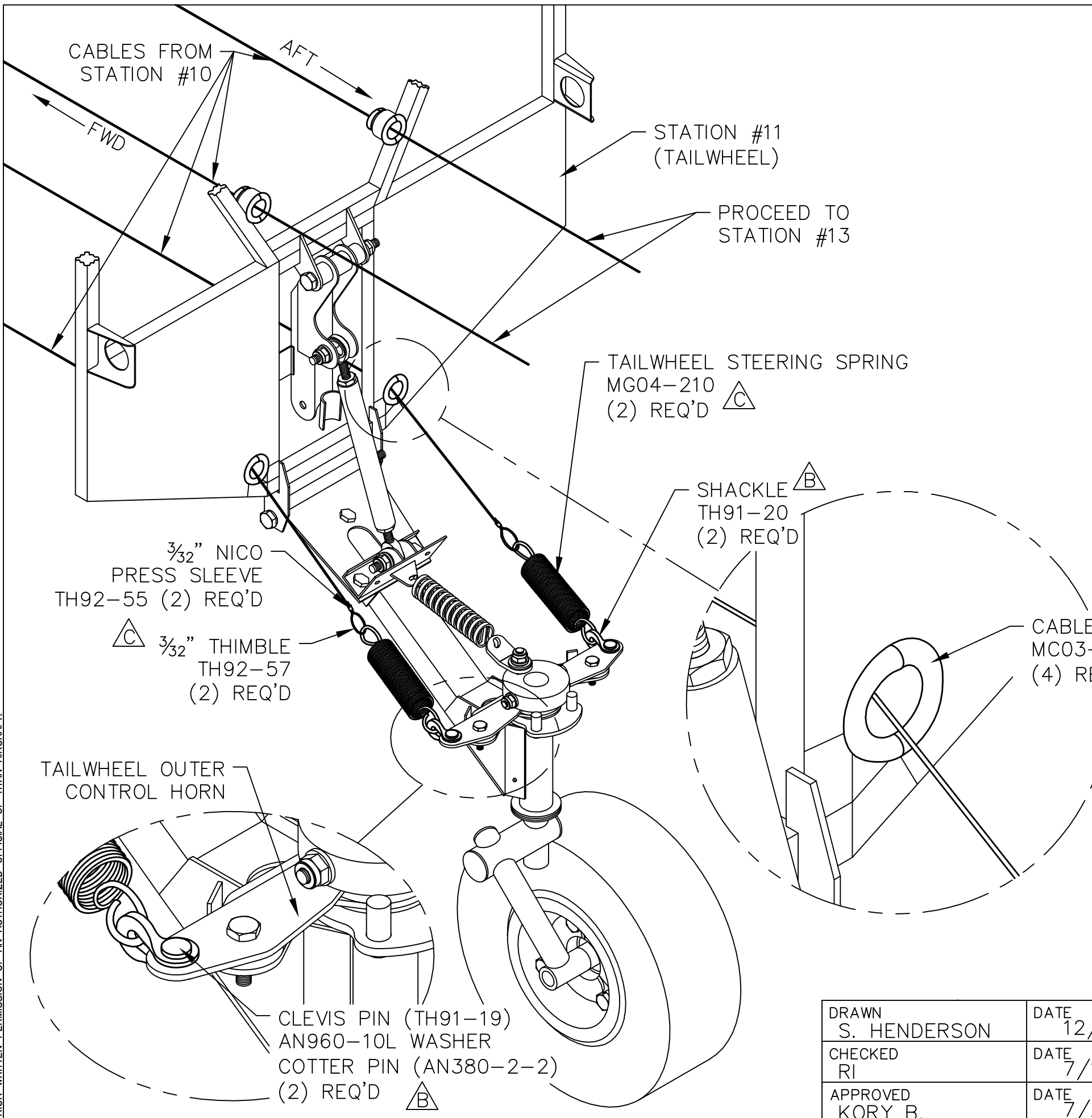


THIS DOCUMENT PROPRIETARY TO TITAN AIRCRAFT, AND IS NOT TO BE USED, CIRCULATED, REPRODUCED, COPIED, OR DISCLOSED IN ANY MANNER WITHOUT PRIOR WRITTEN PERMISSION OF AN AUTHORIZED OFFICIAL OF TITAN AIRCRAFT.



REVISIONS				
E.C. NO.	REV.	DESCRIPTION	BY	DATE
	A	DRAWING RELEASED	SH	12/05
0673	B	UPDATED DRAWING	SH	5/08
0938	C	CORRECTED P/N	SH	4/09

NOTES:

- ADD (4) FAIRLEADS TO THE GUIDE HOLES AND USE RETAINING CLIPS TO SECURE IN PLACE.
- USE (2) SHACKLES, CLEVIS PINS, AND COTTER PINS ON THE TAILWHEEL OUTER CONTROL HORNS.
- ATTACH THE (2) TAILWHEEL STEERING SPRINGS TO EACH SHACKLE, NOW USE THE CABLES COMING FROM STATION #11 AND ROUTE THRU THE BOTTOM GUIDE HOLES, TERMINATE AT TAILWHEEL STEERING SPRING. (BE SURE EACH END OF BOTH SPRINGS ARE CRIMPED, THIS WAY THE SPRING WILL NOT BE ABLE TO FALL OUT OF THE SHACKLES ON THE TAILWHEEL OUTER CONTROL HORNS OR LOOPS IN THE CABLE.)
- REFER BACK TO (T51-05-INS-1302 - RUDDER CABLE ROUTING INSTRUCTIONAL #3), USE THE EXCESS CABLES TO ROUTE FROM THE UPPER BELLCRANK THRU THE TOP FAIRLEADS ON STATION #11, GO TO DRAWING (T51-05-INS-1304 - RUDDER CABLE ROUTING INSTRUCTIONAL #5.) TO COMPLETE ASSEMBLY.


TITAN AIRCRAFT SUPPLY
 1419 STATE ROUTE 45 SOUTH
 AUSTINBURG, OHIO 44010

DRAWN S. HENDERSON		DATE 12/2/05	DETAIL NAME RUDDER CABLE ROUTING INSTRUCTIONAL #4	
CHECKED RI		DATE 7/1/09	SCALE N/A	PART NO.
APPROVED KORY B.		DATE 7/2/09	ASSEMBLY NAME	
			SHEET NO. 4 OF 5	DRAWING NO. CR5
			DRAWING NO. B T51-05-INS-1303-C	