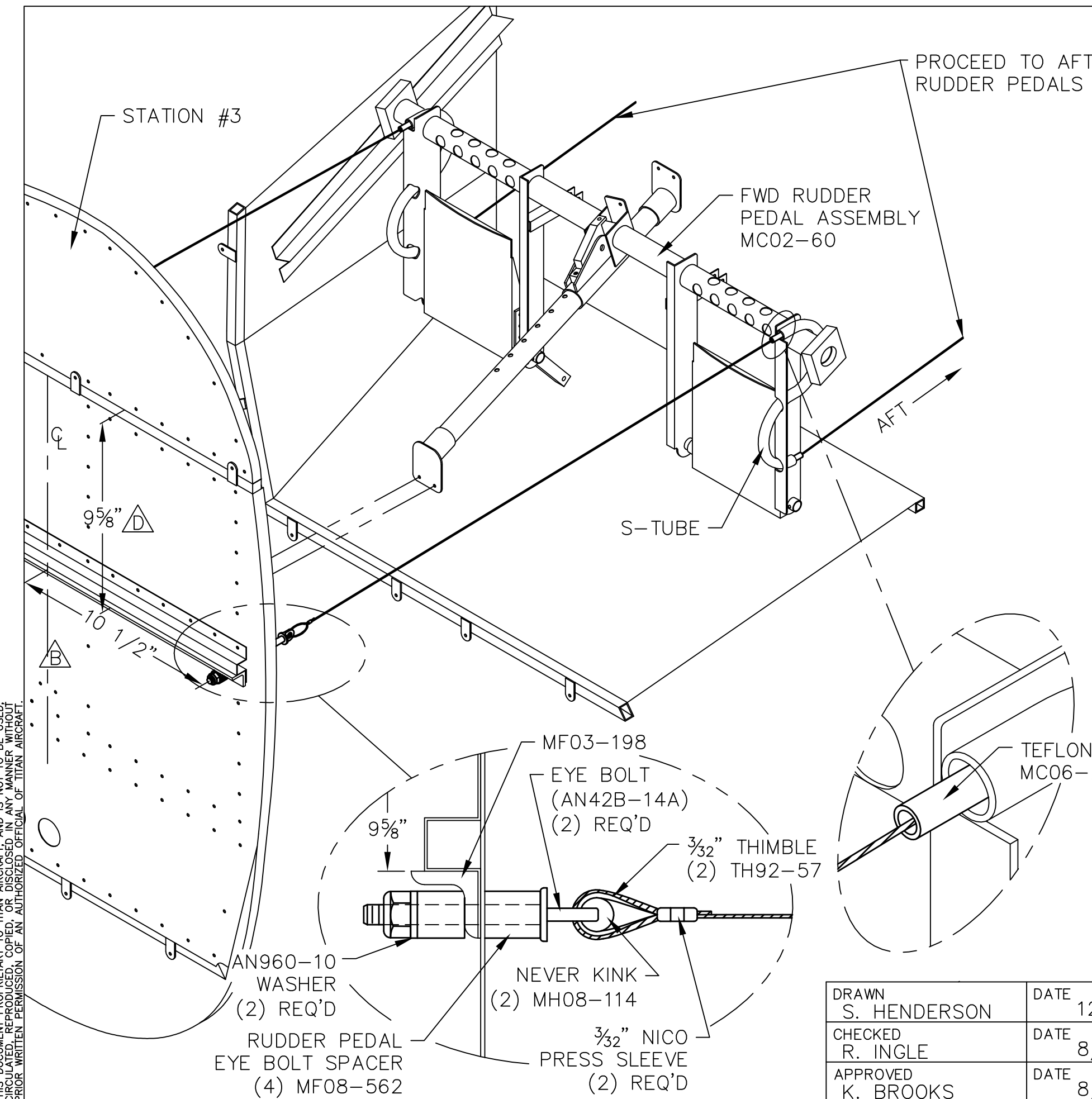


REVISIONS

E.C. NO.	REV.	DESCRIPTION	BY	DATE
	A	DRAWING RELEASED	SH	12/05
0562	B	NOTES ADDED	SH	11/07
0862	C	MH08-114 & MF08-562 ADDED	SH	1/09
0978	D	DIMENSION ADDED	SH	7/09

NOTES:

- BEFORE ROUTING OF THE RUDDER CABLES, REFER TO DRAWING (92-INS-0192-B) TO SEE HOW TO TERMINATE CABLES WITH THIMBLES AND NICO PRESS SLEEVES IN REQUIRED LOCATIONS.
- WHEN ROUTING RUDDER CABLES MEASURE 10½" FROM THE CENTER LINE OF CENTER BULKHEAD #3 (MF03-197) & DRILL A 3/16" HOLE AT EACH MF03-198. POSITION MF03-198 ON BULKHEAD #3 AS SHOWN ON DRAWING T51-03-INS-0820.
- TERMINATE CABLES AT BOTH EYE BOLTS WITH 3/32" THIMBLES, NEVER KINKS, AND NICO PRESS SLEEVES.
- ROUTE CABLES THRU THE TEFLON SLEEVES IN THE S-TUBES, DO NOT CUT CABLES. NEXT STEP OF ROUTING CABLE IS ON (T51-05-INS-1301-A - RUDDER CABLE ROUTING INSTRUCTIONAL #2.)



**TITAN AIRCRAFT SUPPLY**  
 1419 STATE ROUTE 45 SOUTH  
 AUSTINBURG, OHIO 44010

DRAWN S. HENDERSON		DATE 12/2/05	DETAIL NAME RUDDER CABLE ROUTING INSTRUCTIONAL #1	
CHECKED R. INGLE		DATE 8/17/09	SCALE N/A	PART NO.
APPROVED K. BROOKS		DATE 8/18/09	DRAWING NO. <b>B T51-05-INS-1184-D</b>	
			ASSEMBLY NAME	
			SHEET NO. 1 OF 5	DRAWING NO. CR2

THIS DOCUMENT PROPRIETARY TO TITAN AIRCRAFT, AND IS NOT TO BE USED, CIRCULATED, REPRODUCED, COPIED, OR DISCLOSED IN ANY MANNER WITHOUT PRIOR WRITTEN PERMISSION OF AN AUTHORIZED OFFICIAL OF TITAN AIRCRAFT.