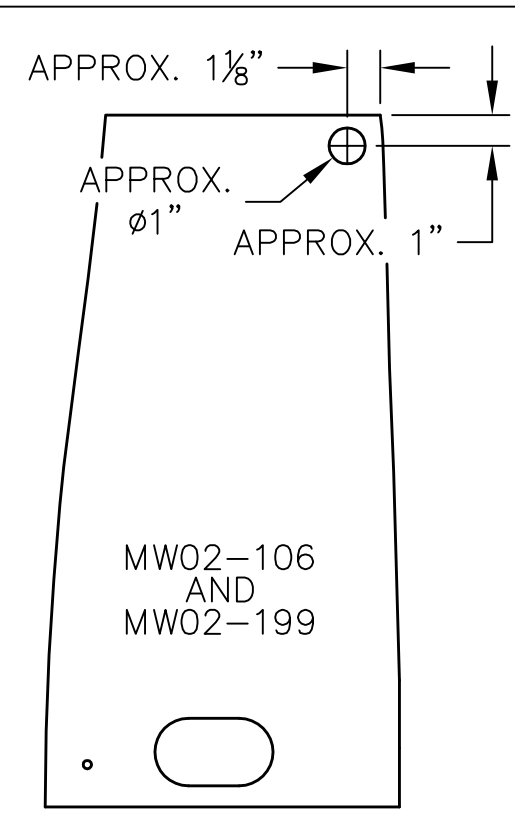


APPROX. DIMENSIONS TO THE CORNER OF THE CENTER TANK MOUNTING BRACKETS

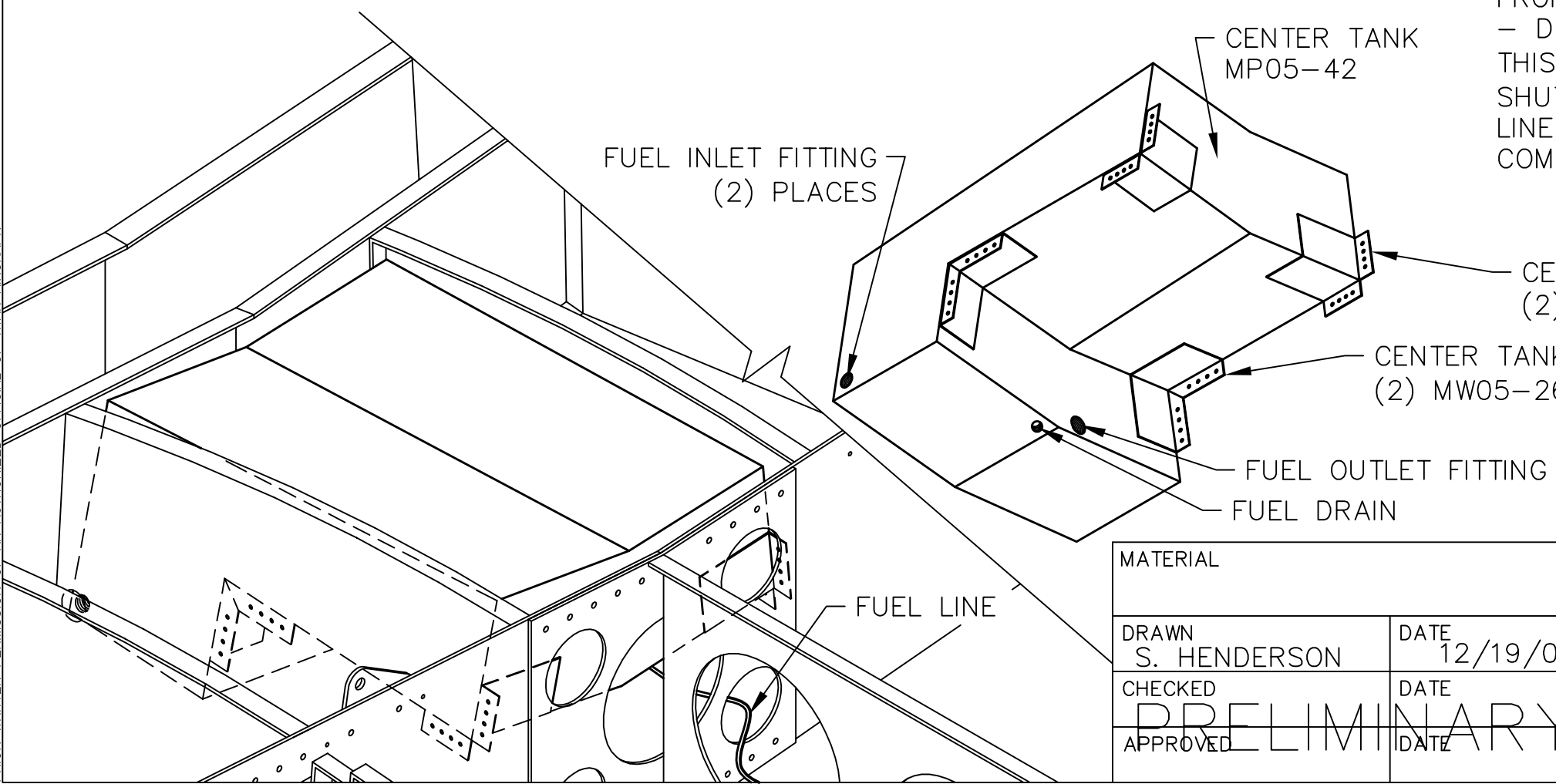


HOLE FOR FUEL LINE

REVISIONS				
E.C. NO.	REV.	DESCRIPTION	BY	DATE
	A	RELEASED DRAWING	SH	12/05

NOTES:

- THE CENTER TANK IS INSTALLED IN THE CENTER SECTION BETWEEN MW02-106 & MW02-199 RIBS, ONE HOLE NEEDS TO BE DRILLED IN EACH RIB AS SHOWN TO THE LEFT. (THESE HOLES ARE FOR RUNNING THE FUEL LINES FROM THE MAIN FUEL TANK OUTLETS, TO THE FUEL INLET FITTINGS ON THE CENTER TANK.)
- WHEN MOUNTING THE CENTER TANK IN THE CENTER SECTION, USE THE APPROX. DIMENSIONS SHOWN TO THE LEFT, (SET CENTER TANK IN AREA WHERE IT WILL BE MOUNTED, BE SURE IT DOES NOT INTERFERE WITH THE SKINS OR AILERON CONTROLS.)
- MOUNT FWD & CENTER BRACKETS TO MW02-106 & MW02-199 AT DESIRED LOCATIONS WITH AD42BS RIVETS, USE PADDING BETWEEN BRACKETS AND CENTER TANK. ALSO USE FOAM PADDING ON ALL SIDES, TO PREVENT CENTER TANK FROM MOVING.
- DRILL A CLEARANCE HOLE THRU THE MAIN SPAR WEB, THIS HOLE WILL BE USED TO ROUTE FUEL LINE THRU (TO SHUTOFF OR SELECTOR VALVE). BE SURE TO KEEP THE FUEL LINE CLEAR OF THE LANDING GEAR AND ANY OTHER MOVING COMPONENTS.



		<b>TITAN AIRCRAFT SUPPLY</b> 1419 STATE ROUTE 45 SOUTH AUSTINBURG, OHIO 44010	
MATERIAL		DETAIL NAME CENTER TANK INSTRUCTIONAL	
DRAWN S. HENDERSON	DATE 12/19/05	SCALE 1/4"=1"	PART NO.
CHECKED	DATE	ASSEMBLY NAME	
<p style="text-align: center; font-size: 2em; opacity: 0.5;">PRELIMINARY</p>		PART NO.	DRAWING NO.
		DRAWING NO. <b>B T51-05-INS-1156-B</b>	

THIS DOCUMENT PROPRIETARY TO TITAN AIRCRAFT, AND IS NOT TO BE USED, CIRCULATED, REPRODUCED, COPIED, OR DISCLOSED IN ANY MANNER WITHOUT PRIOR WRITTEN PERMISSION OF AN AUTHORIZED OFFICIAL OF TITAN AIRCRAFT.