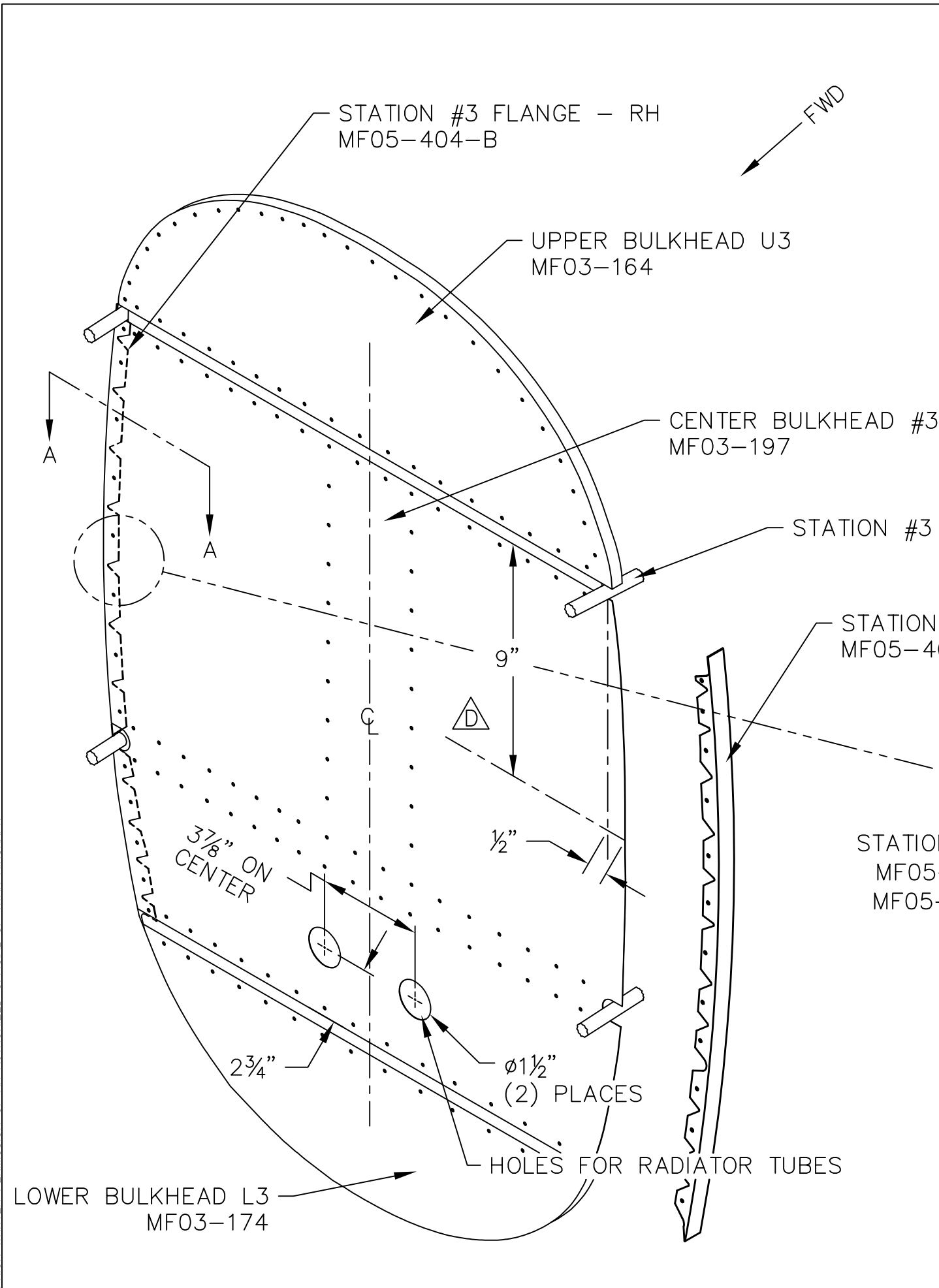


THIS DOCUMENT PROPRIETARY TO TITAN AIRCRAFT, AND IS NOT TO BE USED, CIRCULATED, REPRODUCED, COPIED, OR DISCLOSED IN ANY MANNER WITHOUT PRIOR WRITTEN PERMISSION OF AN AUTHORIZED OFFICIAL OF TITAN AIRCRAFT.



NOTE:

- REFER TO DRAWING T51-03-INS-0820 FOR MORE INSTRUCTIONS ON STATION #3.
- ATTACH CENTER BULKHEAD #3 (MF03-197) TO FRAME STATION #3 USING HAT SECTIONS ON ALL TUBES.
- LINE EACH STATION #3 FLANGE (MF03-404-B & MF03-403-B) WITH THE EDGE OF MF03-197. BE SURE BOTH FLANGES ARE APPROX. 1/16" OUT FROM THE EDGE OF MF03-197. (THIS WILL PREVENT THE SIDE SKINS FROM RUBBING AGAINST THE SHARP EDGES OF MF03-197).
- STATION #3 FLANGES ATTACH TO THE AFT SIDE OF CENTER BULKHEAD #3. (DRILL & CLECO FLANGES IN PLACE WHEN SATISFIED WITH POSITIONING.)
- BOND AND RIVET PARTS IN PLACE.

REVISIONS				
E.C. NO.	REV.	DESCRIPTION	BY	DATE
	A	DRAWING RELEASED	CE	2/04
0177	B	ADDED PART NUMBER	CE	10/05
0441	C	PARTS CHANGED	SH	3/07
0544	D	DIMENSION ADDED	SH	10/07
0802	E	TOP VIEW ADDED	SH	11/08

TITAN AIRCRAFT SUPPLY
 1419 STATE ROUTE 45 SOUTH
 AUSTINBURG, OHIO 44010

MATERIAL		DETAIL NAME STATION #3 INSTALLATION	
DRAWN C. EMERY	DATE 2/26/04	SCALE 3/16"=1"	PART NO.
CHECKED RI	DATE 1/21/09	ASSEMBLY NAME	
APPROVED KORY B.	DATE 1/23/09	PART NO.	DRAWING NO. F5
		DRAWING NO. B T51-04-INS-1041-E	