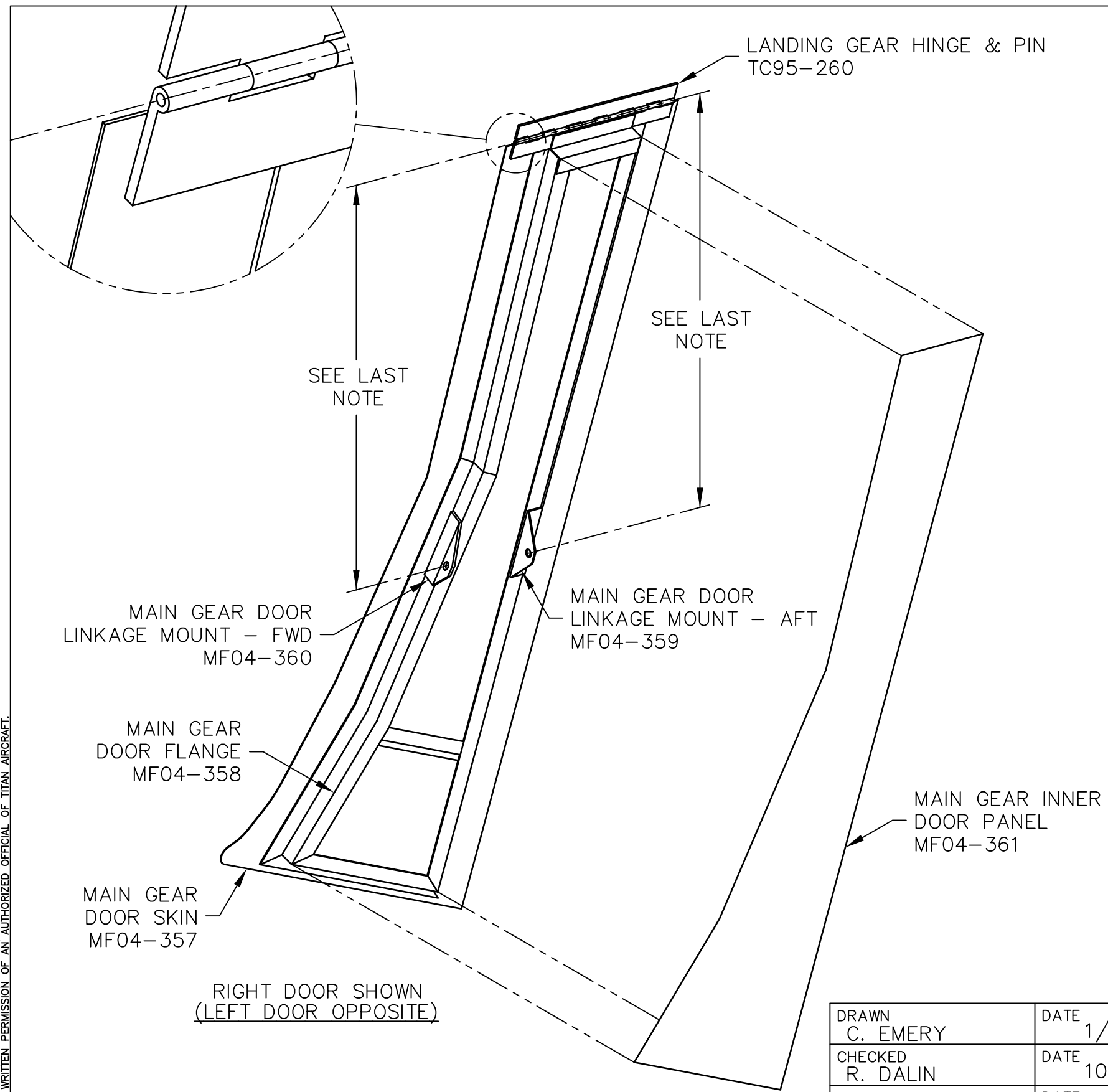


THIS DOCUMENT PROPRIETARY TO TITAN AIRCRAFT AND IS NOT TO BE USED, REPRODUCED, COPIED, OR DISCLOSED IN ANY MANNER WITHOUT THE PRIOR WRITTEN PERMISSION OF AN AUTHORIZED OFFICIAL OF TITAN AIRCRAFT.



REVISIONS				
E.C. NO.	REV.	DESCRIPTION	BY	DATE
0801	B	UPDATED DRAWING	SH	11/08
1051	C	UPDATED DRAWING	BH	4/10
1164	D	UPDATED DRAWING	BH	8/13

NOTES:

- BOND ONE FLANGE OF THE HINGE (TC95-260) TO THE TOP OF THE MAIN GEAR DOOR SKIN (MF04-357).
- CUT THE MAIN GEAR DOOR FLANGE (MF04-358) FROM THE SUPPLIED MATERIAL TO FIT AS SHOWN.
- ATTACH THE MAIN GEAR DOOR FLANGES USING AD42ABS RIVETS. IT IS CRITICAL TO KEEP THE RIVET LINE 1/4" FROM THE EDGE OF THE MAIN DOOR SKIN ON THE LEADING AND TRAILING EDGES. THE RIVET LINE AT THE BOTTOM SHOULD BE 5/8" FROM THE EDGE.
- PLACE THE TOP MAIN GEAR DOOR FLANGE OVER THE FLANGE OF THE HINGE. BOND AND RIVET THE MAIN GEAR DOOR SKIN, FLANGE, AND HINGE TOGETHER.
- BOND AND RIVET THE MAIN GEAR INNER DOOR PANEL (MF04-361) TO THE TOP OF THE FLANGES ONCE THEY ARE INSTALLED.
- ATTACH THE FWD AND AFT LINKAGE MOUNTS (MF04-359 & 360) TO THE MAIN GEAR DOOR FLANGE. IF YOU HAVE THE GEAR LINKAGE TUBES WELDED TO THE GEAR LEGS, USE 16 1/4" FOR THE FWD AND 16 1/2" FOR THE AFT DIMENSIONS. IF YOU HAVE THE 2" (MG13-285) OR 3" (MG13-279) MAIN GEAR DOOR ATTACH MOUNT ASSEMBLIES, USE 13 1/2" FOR THE FWD AND 14 1/2" FOR THE AFT DIMENSIONS. THE DIMENSIONS ARE TAKEN FROM THE CENTER OF THE HINGE PIN TO THE CENTER OF THE LINKAGE MOUNTS.

RIGHT DOOR SHOWN
(LEFT DOOR OPPOSITE)


TITAN AIRCRAFT SUPPLY
 1419 STATE ROUTE 45 SOUTH
 AUSTINBURG, OHIO 44010

DRAWN C. EMERY		DATE 1/30/04	DETAIL NAME MAIN LANDING GEAR DOOR ASSEMBLY INS.	
CHECKED R. DALIN		DATE 10/2/18	SCALE 1/4"=1"	PART NO.
APPROVED		DATE	ASSEMBLY NAME	
			PART NO.	DRAWING NO. LG7
			DRAWING NO. B T51-04-INS-1039-D	