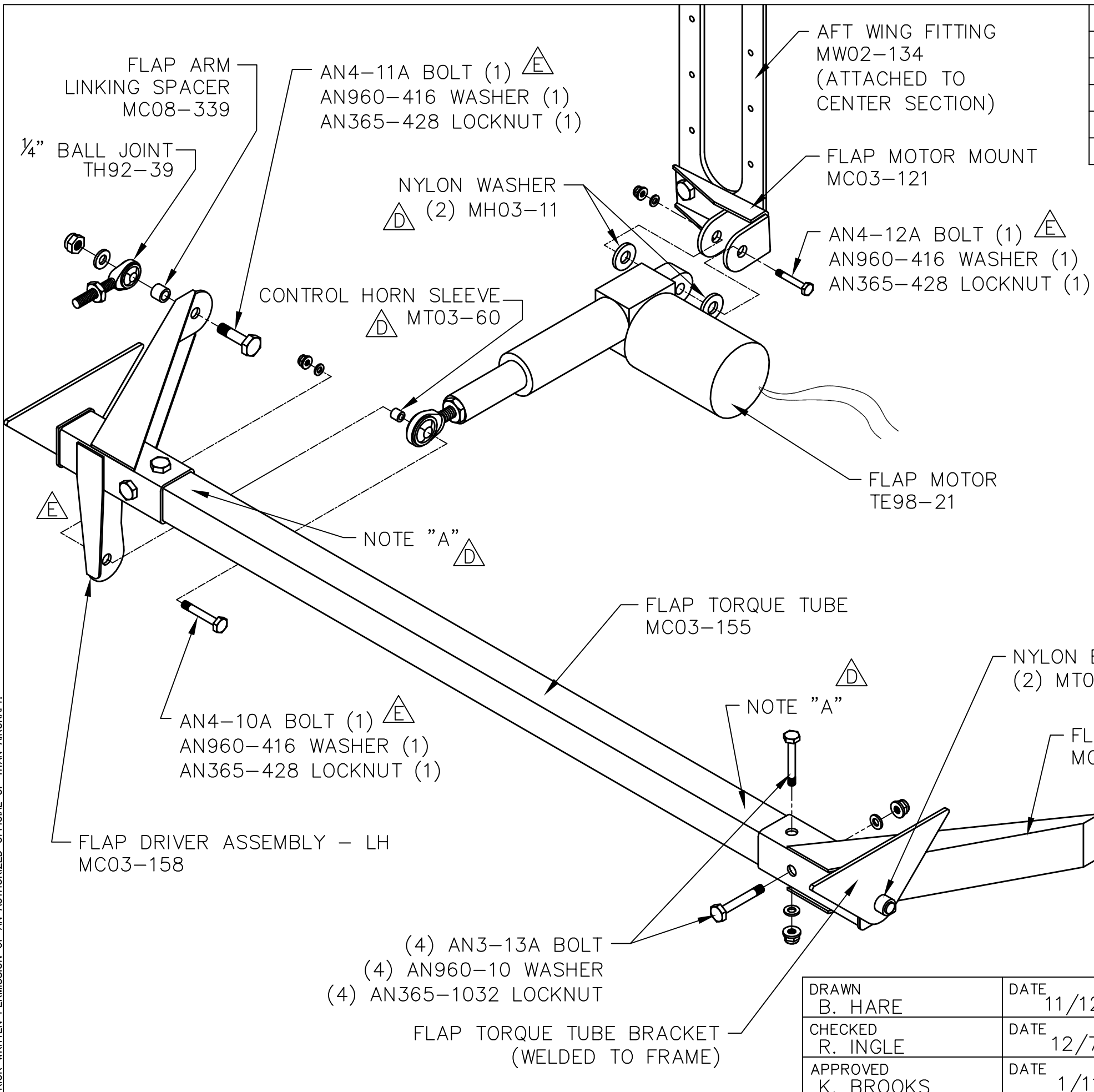


THIS DOCUMENT PROPRIETARY TO TITAN AIRCRAFT, AND IS NOT TO BE USED, CIRCULATED, REPRODUCED, COPIED, OR DISCLOSED IN ANY MANNER WITHOUT PRIOR WRITTEN PERMISSION OF AN AUTHORIZED OFFICIAL OF TITAN AIRCRAFT.



REVISIONS				
E.C. NO.	REV.	DESCRIPTION	BY	DATE
0087	B	ADDED HARDWARE	CE	3/04
0598	C	PARTS ADDED TO DRAWING	SH	1/08
0762	D	PART CLARITY DEFINED	SH	8/08
1000	E	ADDED HARDWARE & REV	BH	11/09

NOTES:

- ATTACH ONE FLAP DRIVER ASSEMBLY ONTO FLAP TORQUE TUBE BRACKET.
- INSERT FLAP TORQUE TUBE AS FAR AS POSSIBLE INTO THE MOUNTED FLAP DRIVER ASSEMBLY.
- ATTACH SECOND FLAP DRIVER ASSEMBLY ONTO THE OPPOSITE FLAP TORQUE TUBE BRACKET.
- CENTER THE FLAP TORQUE TUBE BETWEEN THE TWO FLAP DRIVERS AND DRILL THE (4) BOLT HOLES NEEDED FOR MOUNTING. (TO SECURE (MC03-155) IN PLACE WHILE DRILLING, USE A PAIR OF VISE GRIPS ON THE INSIDE END OF THE FLAP DRIVERS, SEE NOTE "A")
- BOLT THE FLAP MOTOR TO THE FLAP MOTOR MOUNT.
- BOLT THE BALL JOINTED END OF THE FLAP MOTOR TO (MF03-158) AS SHOWN.
- ALSO REFER TO DRAWING B T751-07-INS-1583.


TITAN AIRCRAFT SUPPLY
 1419 STATE ROUTE 45 SOUTH
 AUSTINBURG, OHIO 44010

DRAWN B. HARE		DATE 11/12/09	SCALE N/A		PART NO.
CHECKED R. INGLE		DATE 12/7/09	ASSEMBLY NAME FLAP DRIVER INSTALLATION		
APPROVED K. BROOKS		DATE 1/11/10	PART NO.	DRAWING NO.	F47
DRAWING NO. B T51-03-INS-0929-E					