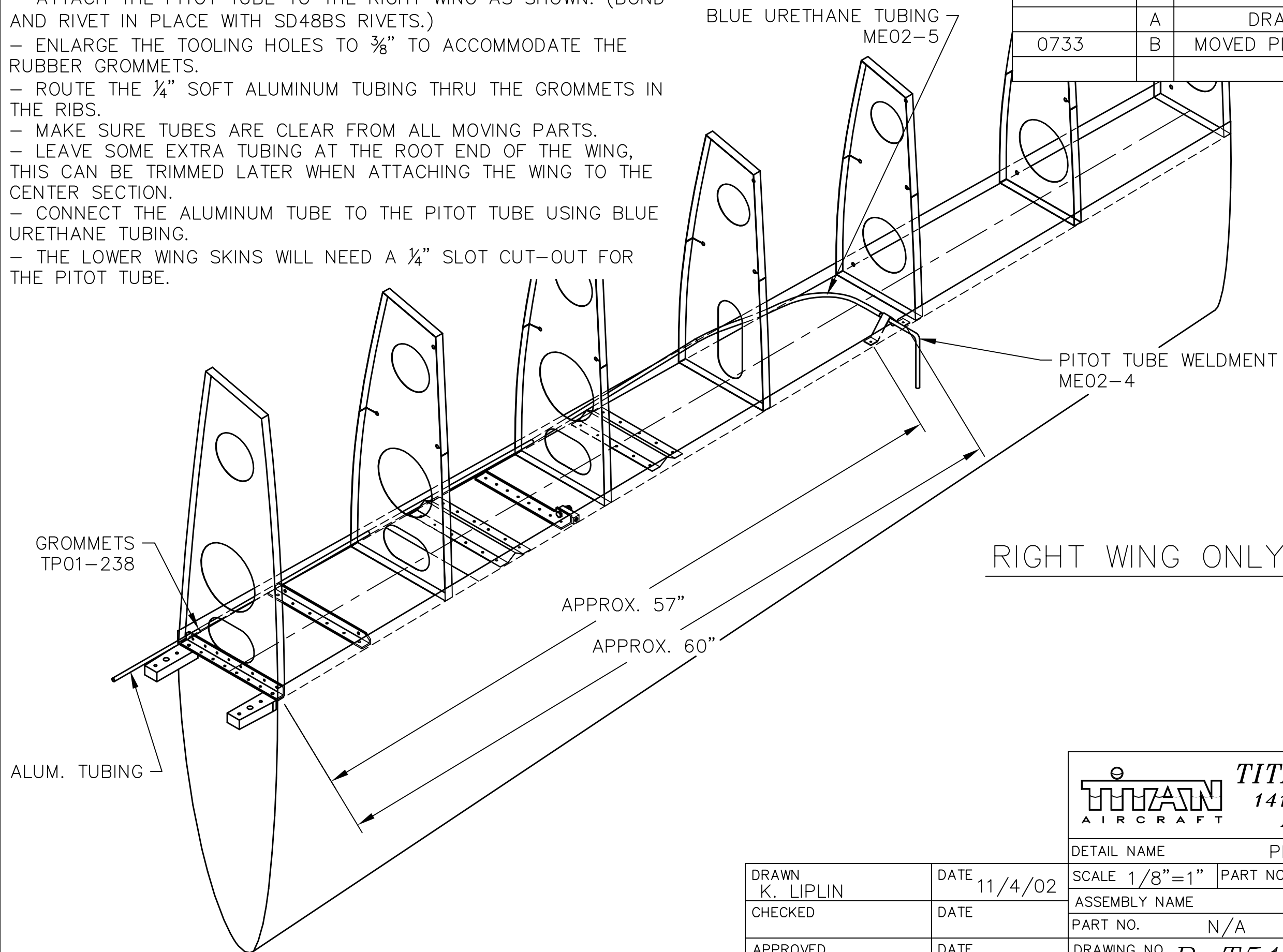


**NOTES:**

- ATTACH THE PITOT TUBE TO THE RIGHT WING AS SHOWN. (BOND AND RIVET IN PLACE WITH SD48BS RIVETS.)
- ENLARGE THE TOOLING HOLES TO  $\frac{3}{8}$ " TO ACCOMMODATE THE RUBBER GROMMETS.
- ROUTE THE  $\frac{1}{4}$ " SOFT ALUMINUM TUBING THRU THE GROMMETS IN THE RIBS.
- MAKE SURE TUBES ARE CLEAR FROM ALL MOVING PARTS.
- LEAVE SOME EXTRA TUBING AT THE ROOT END OF THE WING, THIS CAN BE TRIMMED LATER WHEN ATTACHING THE WING TO THE CENTER SECTION.
- CONNECT THE ALUMINUM TUBE TO THE PITOT TUBE USING BLUE URETHANE TUBING.
- THE LOWER WING SKINS WILL NEED A  $\frac{1}{4}$ " SLOT CUT-OUT FOR THE PITOT TUBE.

REVISIONS				
E.C. NO.	REV.	DESCRIPTION	BY	DATE
	A	DRAWING RELEASED	KL	11/02
0733	B	MOVED PITOT TUBE OUTBOARD	SH	7/08



RIGHT WING ONLY!


**TITAN AIRCRAFT SUPPLY**  
 1419 STATE ROUTE 45 SOUTH  
 AUSTINBURG, OHIO 44010

DETAIL NAME		PITOT TUBE INSTALLATION	
SCALE	1/8"=1"	PART NO.	N/A
ASSEMBLY NAME		T-51 MUSTANG	
PART NO.	N/A	DRAWING NO.	
DRAWING NO.		<b>B T51-02-INS-0545-B</b>	

DRAWN	K. LIPLIN	DATE	11/4/02
CHECKED		DATE	
APPROVED		DATE	

THIS DOCUMENT PROPRIETARY TO TITAN AIRCRAFT, AND IS NOT TO BE USED, CIRCULATED, REPRODUCED, COPIED, OR DISCLOSED IN ANY MANNER WITHOUT PRIOR WRITTEN PERMISSION OF AN AUTHORIZED OFFICIAL OF TITAN AIRCRAFT.