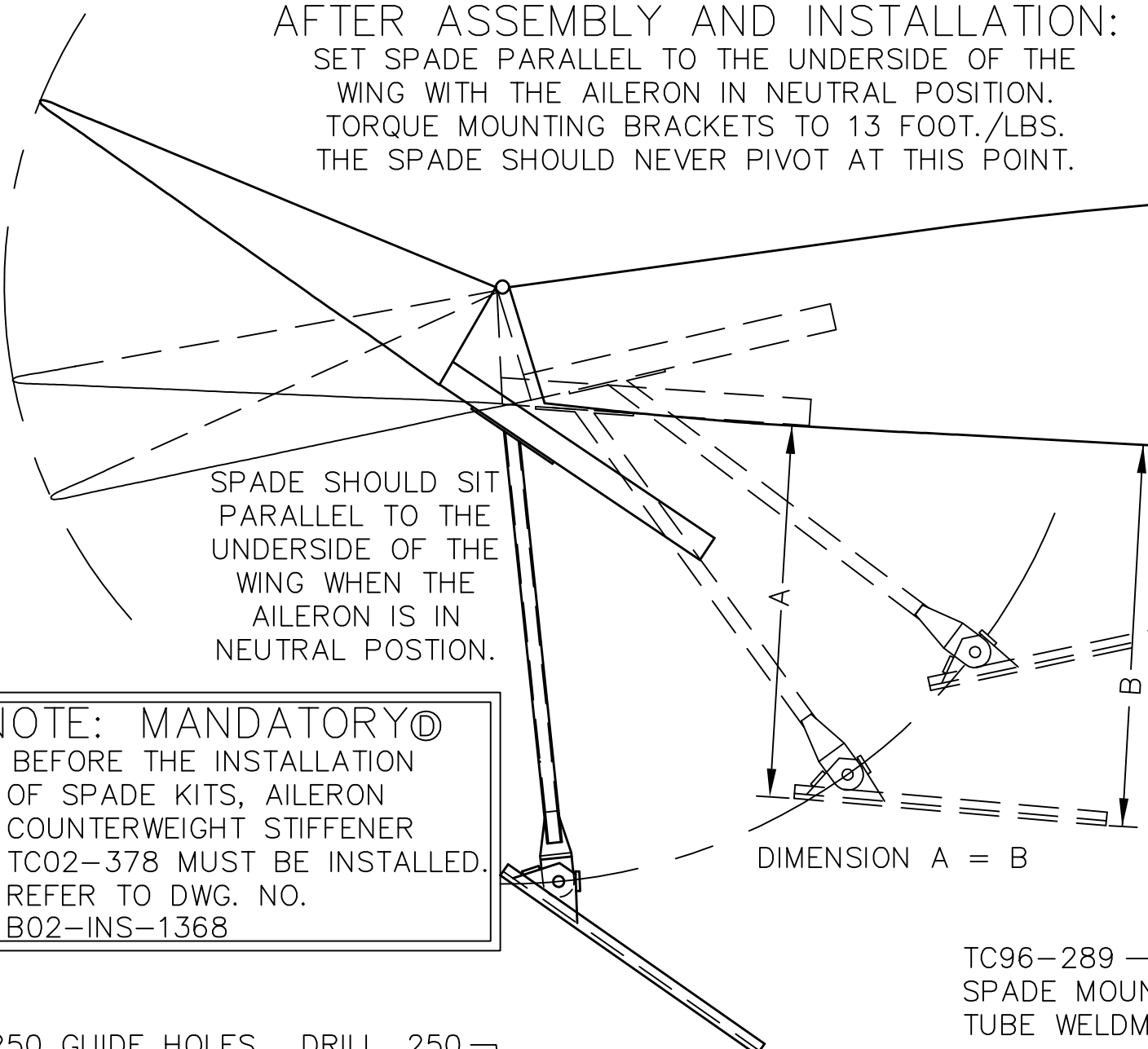


REVISIONS

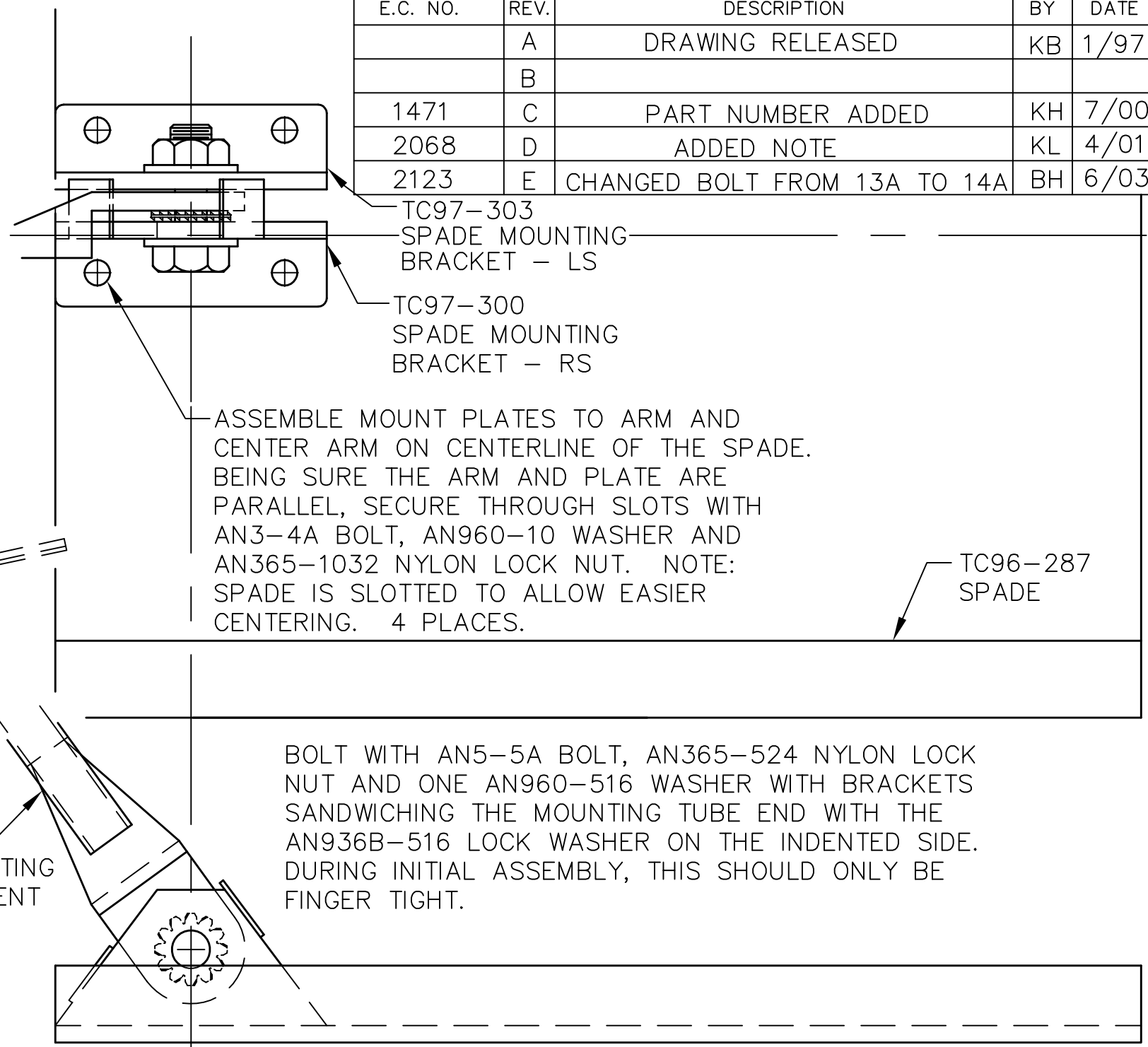
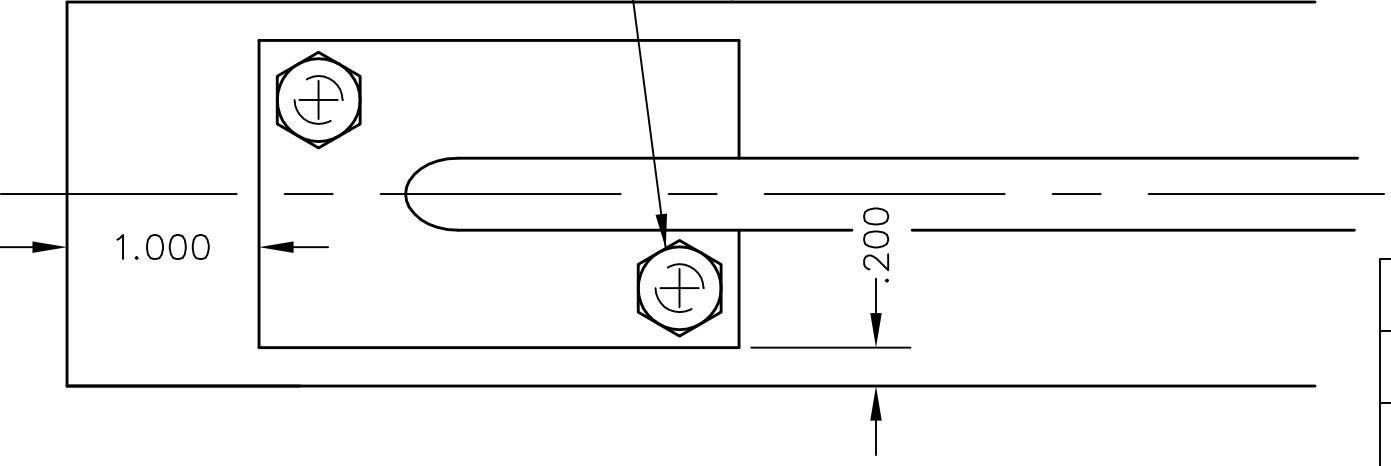
E.C. NO.	REV.	DESCRIPTION	BY	DATE
	A	DRAWING RELEASED	KB	1/97
	B			
1471	C	PART NUMBER ADDED	KH	7/00
2068	D	ADDED NOTE	KL	4/01
2123	E	CHANGED BOLT FROM 13A TO 14A	BH	6/03

AFTER ASSEMBLY AND INSTALLATION:
 SET SPADE PARALLEL TO THE UNDERSIDE OF THE
 WING WITH THE AILERON IN NEUTRAL POSITION.
 TORQUE MOUNTING BRACKETS TO 13 FOOT./LBS.
 THE SPADE SHOULD NEVER PIVOT AT THIS POINT.



NOTE: MANDATORY®
 - BEFORE THE INSTALLATION
 OF SPADE KITS, AILERON
 COUNTERWEIGHT STIFFENER
 TC02-378 MUST BE INSTALLED.
 REFER TO DWG. NO.
 B02-INS-1368

.250 GUIDE HOLES. DRILL .250
 THRU COUNTERWEIGHT. BOLT
 2 PLACES WITH AN4-14A BOLT,
 AN365-428 NYLON LOCK NUT
 AND AN960-416 WASHER.



TITAN AIRCRAFT SUPPLY
 1419 STATE ROUTE 45 SOUTH
 AUSTINBURG, OHIO 44010

DETAIL NAME		SPADE INSTALLATION	
SCALE	N/A	PART NO.	TC98-316
ASSEMBLY NAME		SINGLE AND TWO PLACE TORNADO	
PART NO.		DRAWING NO.	
DRAWING NO.		B 97-INS-0813-E	

DRAWN	K. BOHRER	DATE	1/15/97
CHECKED		DATE	
APPROVED		DATE	

THIS DOCUMENT PROPRIETARY TO TITAN AIRCRAFT, AND IS NOT TO BE USED,
 CIRCULATED, REPRODUCED, COPIED, OR DISCLOSED IN ANY MANNER WITHOUT
 PRIOR WRITTEN PERMISSION OF AN AUTHORIZED OFFICIAL OF TITAN AIRCRAFT.