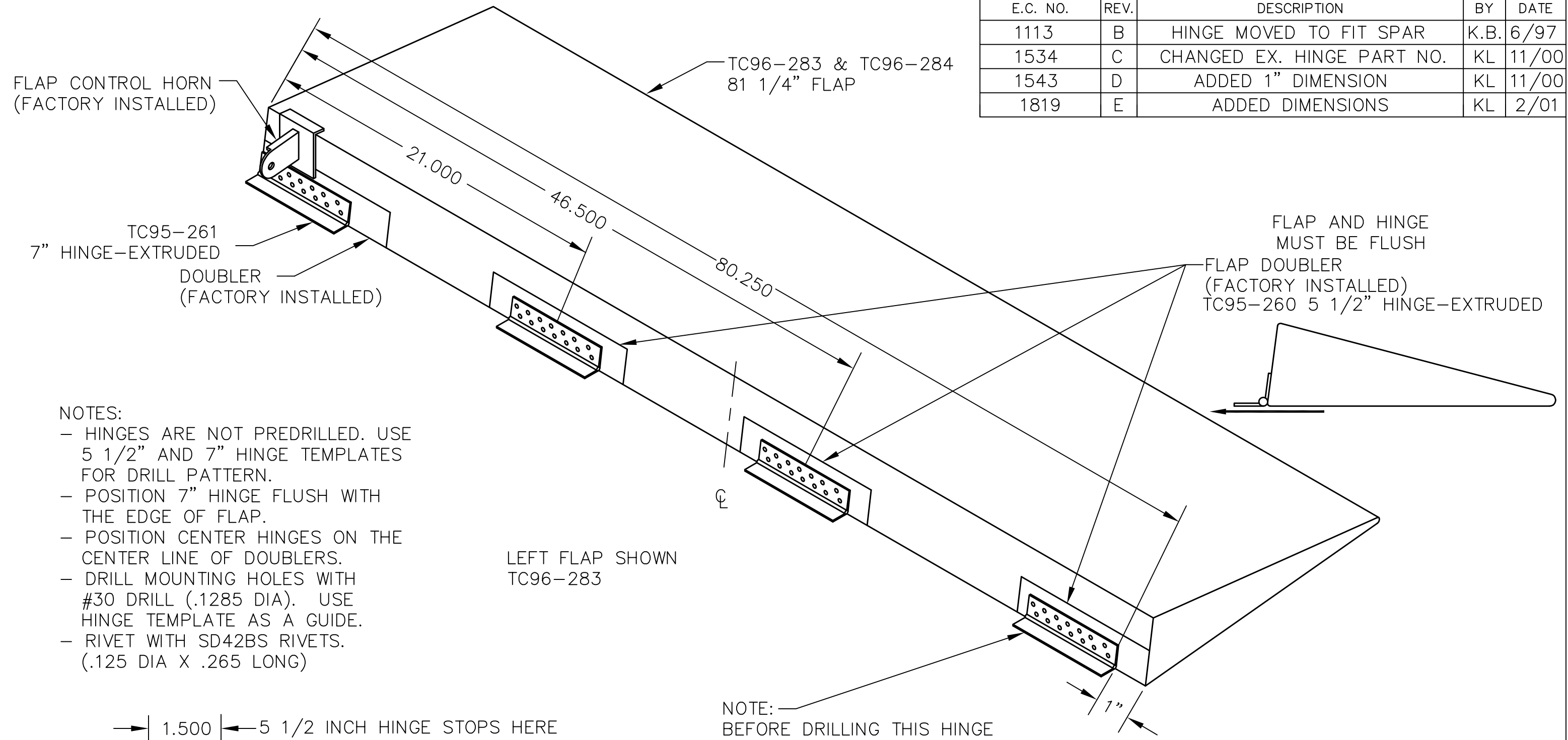


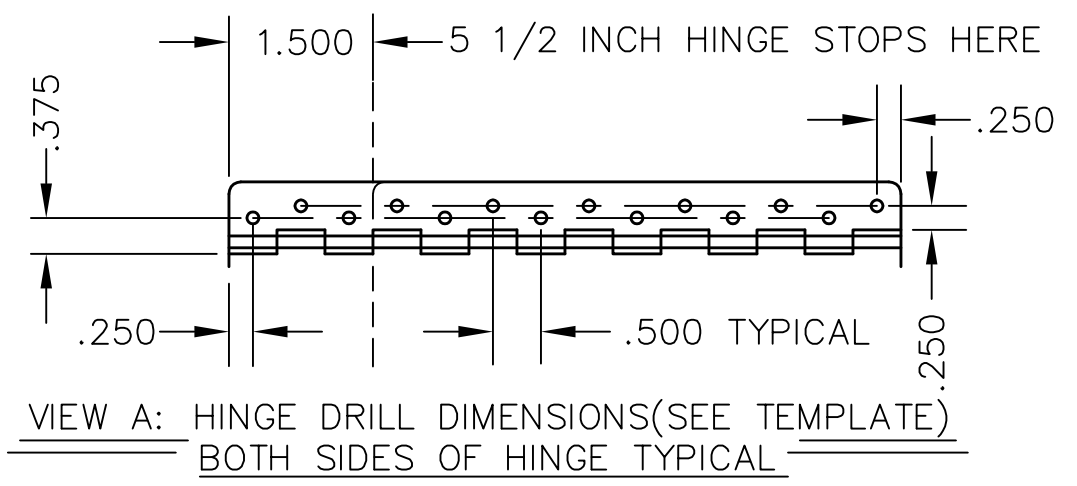
**REVISIONS**

E.C. NO.	REV.	DESCRIPTION	BY	DATE
1113	B	HINGE MOVED TO FIT SPAR	K.B.	6/97
1534	C	CHANGED EX. HINGE PART NO.	KL	11/00
1543	D	ADDED 1" DIMENSION	KL	11/00
1819	E	ADDED DIMENSIONS	KL	2/01



- NOTES:
- HINGES ARE NOT PREDRILLED. USE 5 1/2" AND 7" HINGE TEMPLATES FOR DRILL PATTERN.
  - POSITION 7" HINGE FLUSH WITH THE EDGE OF FLAP.
  - POSITION CENTER HINGES ON THE CENTER LINE OF DOUBLERS.
  - DRILL MOUNTING HOLES WITH #30 DRILL (.1285 DIA). USE HINGE TEMPLATE AS A GUIDE.
  - RIVET WITH SD42BS RIVETS. (.125 DIA X .265 LONG)

NOTE:  
BEFORE DRILLING THIS HINGE INSURE THAT IT MEETS BOTH SPAR AND FLAP DOUBLERS. IT SHOULD SIT APPROX. 1" FROM EDGE OF FLAP.



**TITAN AIRCRAFT SUPPLY**  
 1419 STATE ROUTE 45 SOUTH  
 AUSTINBURG, OHIO 44010

DETAIL NAME: 81 1/4" FLAP HINGE INSTALLATION  
 SCALE: N/A PART NO.:  
 ASSEMBLY NAME: 26 FOOT WING  
 PART NO.: DRAWING NO.:  
 DRAWING NO. **B 96-INS-0710-E**

DRAWN J. PRESTON	DATE 10/8/92
CHECKED R. INGLE	DATE 3/1/01
APPROVED J. WILLIAMS	DATE 3/1/01

THIS DOCUMENT PROPRIETARY TO TITAN AIRCRAFT, AND IS NOT TO BE USED, CIRCULATED, REPRODUCED, COPIED, OR DISCLOSED IN ANY MANNER WITHOUT PRIOR WRITTEN PERMISSION OF AN AUTHORIZED OFFICIAL OF TITAN AIRCRAFT.