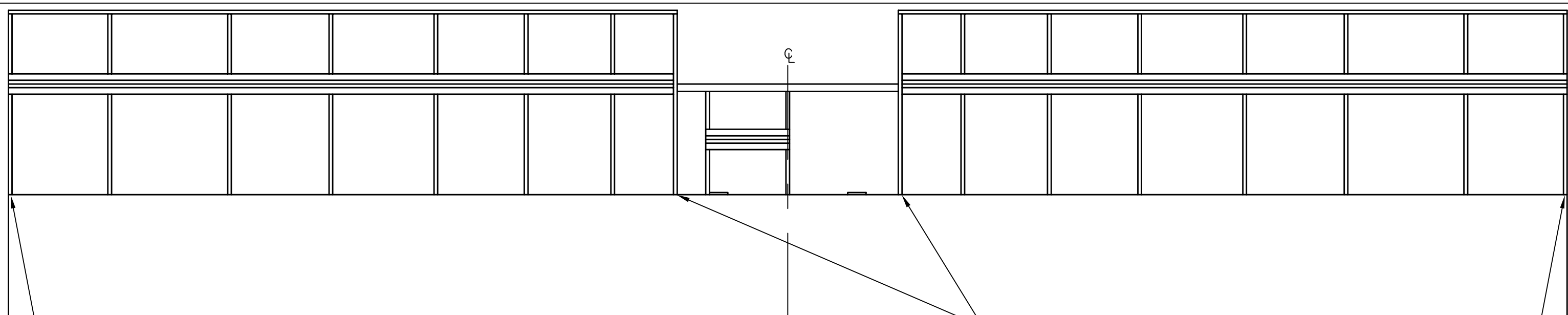


THIS DOCUMENT PROPRIETARY TO TITAN AIRCRAFT, AND IS NOT TO BE USED, CIRCULATED, REPRODUCED, COPIED, OR DISCLOSED IN ANY MANNER WITHOUT PRIOR WRITTEN PERMISSION OF AN AUTHORIZED OFFICIAL OF TITAN AIRCRAFT.

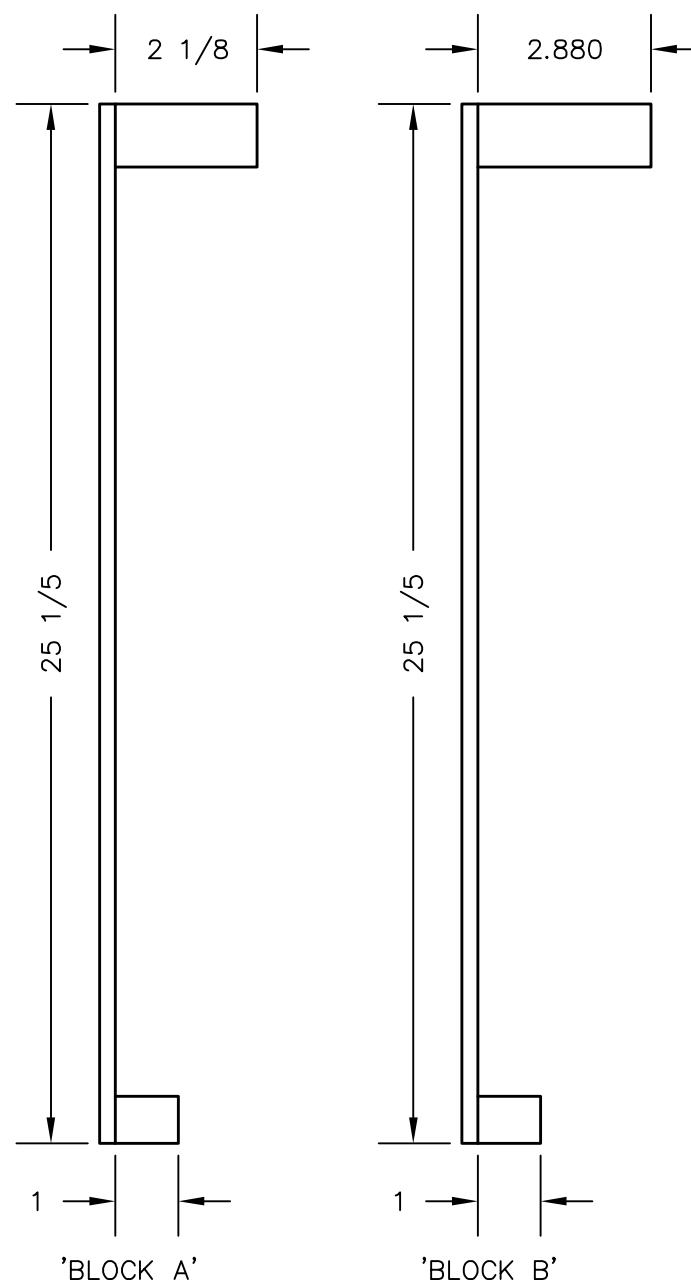
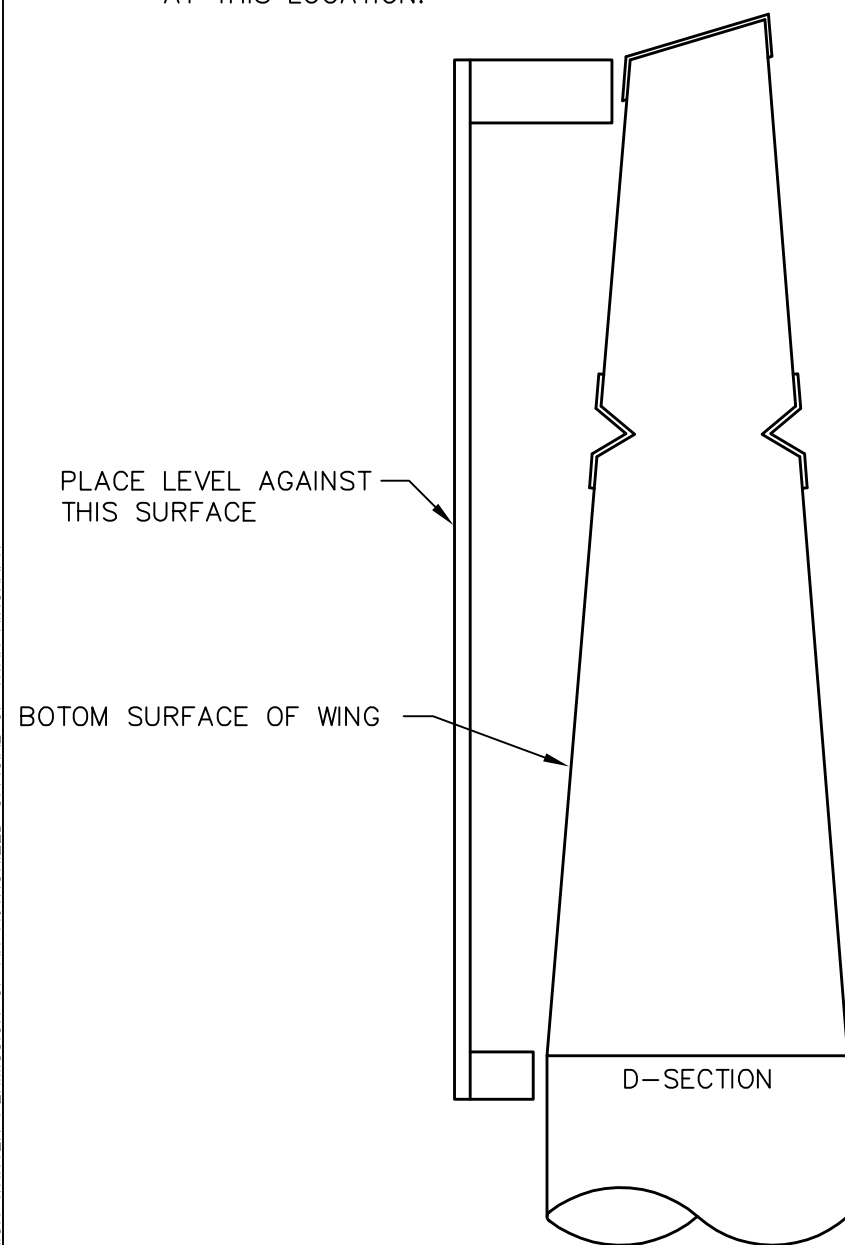


WING TIP POSITION 'BLOCK B' AT THIS LOCATION.

BOTTOM VIEW OF WING

WING ROOT POSITION 'BLOCK A' AT THESE TWO LOCATIONS.

WING TIP POSITION 'BLOCK B' AT THIS LOCATION.



NOTES:

- WASHOUT IS SET SO WING TIPS HAVE LESS ANGLE OF ATTACK THAN WING ROOTS. THIS IS AN IMPORTANT STEP AND SHOULD BE CHECKED OFTEN THROUGHOUT WING CONSTRUCTION.
- WASHOUT MUST BE FREQUENTLY CHECKED WHILE INSTALLING WING SKINS.

CHECKING WASHOUT:

METHOD ONE:

- BUILD 'BLOCK A' AND 'BLOCK B'.
- LEVEL WING.
- POSITION 'BLOCK A' AT WING ROOT AS SHOWN. PLACE LEVEL AGAINST THE BLOCK AND ADJUST RIBS TO OBTAIN A VERTICAL READING.
- POSITION 'BLOCK B' AT WING TIP AS SHOWN. PLACE LEVEL AGAINST THE BLOCK AND ADJUST RIBS TO OBTAIN A VERTICAL READING.
- WASHOUT: $1.7^\circ \pm .3^\circ$
WING TIPS MUST BE WITHIN $\pm .2^\circ$ OF EACH OTHER.

METHOD TWO:

- BUILD ONLY 'BLOCK A'.
- ATTACH ELECTRONIC LEVEL TO THE BLOCK.
- POSITION BLOCK AT WING ROOT AND SET LEVEL TO 0° .
- POSITION BLOCK AT WING TIPS. THE LEVEL SHOULD READ 1.7° , IF NOT, ADJUST RIBS UNTIL A READING OF 1.7° IS REACHED.
- WASHOUT: $1.7^\circ \pm .3^\circ$
WING TIPS MUST BE WITHIN $\pm .2^\circ$ OF EACH OTHER.

TITAN AIRCRAFT SUPPLY
1419 STATE ROUTE 45 SOUTH
AUSTINBURG, OHIO 44010

DRAWN	J. PRESTON	DATE	1/19/93
CHECKED		DATE	
APPROVED		DATE	

DETAIL NAME		SETTING WING WASHOUT	
SCALE	N/A	PART NO.	
ASSEMBLY NAME		20 FOOT WING	
PART NO.		DRAWING NO.	
DRAWING NO.		B 93-INS-0340-A	