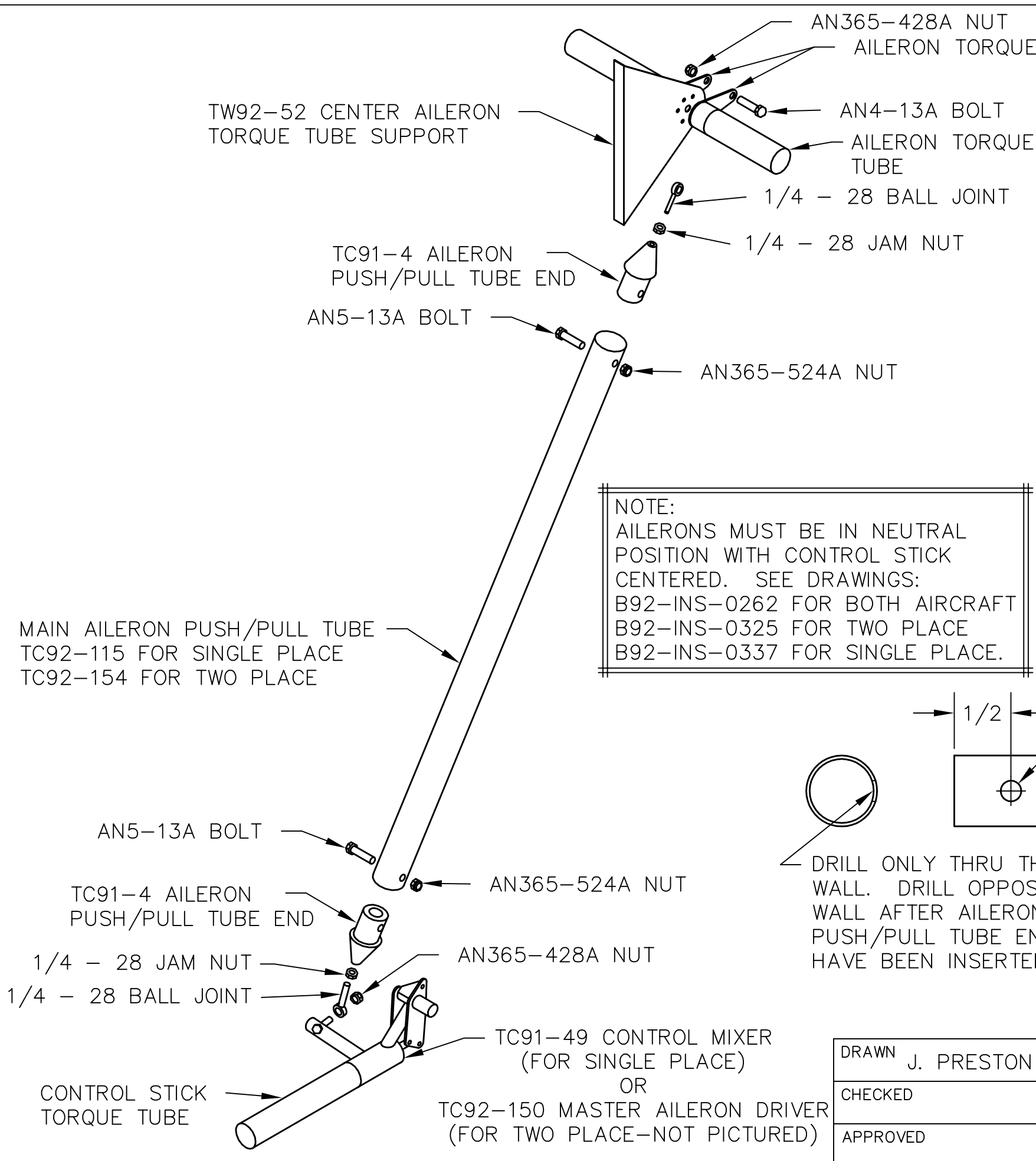
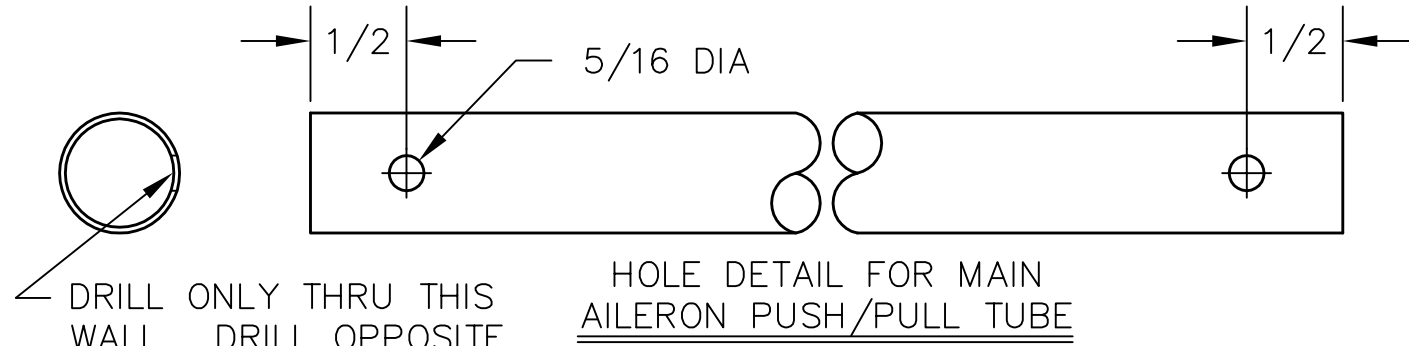



THIS DOCUMENT PROPRIETARY TO TITAN AIRCRAFT, AND IS NOT TO BE USED, CIRCULATED, REPRODUCED, COPIED, OR DISCLOSED IN ANY MANNER WITHOUT PRIOR WRITTEN PERMISSION OF AN AUTHORIZED OFFICIAL OF TITAN AIRCRAFT.



NOTE:  
AILERONS MUST BE IN NEUTRAL POSITION WITH CONTROL STICK CENTERED. SEE DRAWINGS:  
B92-INS-0262 FOR BOTH AIRCRAFT  
B92-INS-0325 FOR TWO PLACE  
B92-INS-0337 FOR SINGLE PLACE.



- NOTES:
- ALL DIMENSIONS ARE INCHES.
  - STICK CONTROLS SHOULD BE COMPLETELY ASSEMBLED.
  - WING SHOULD BE COMPLETELY ASSEMBLED.
  - DRILL ONE 5/16 DIA HOLE THRU EACH END OF THE MAIN AILERON PUSH/PULL TUBE AS SHOWN. ONLY DRILL THRU ONE WALL PER END.
  - INSERT AILERON PUSH/PULL TUBE ENDS TO MAIN AILERON PUSH/PULL TUBE.
  - DRILL 5/16 DIA HOLE THRU OPPOSITE WALL OF MAIN AILERON PUSH/PULL TUBE USING EXISTING HOLES IN AILERON PUSH/PULL TUBE END AS A GUIDE.
  - BOLT AILERON PUSH/PULL TUBE ENDS TO MAIN AILERON PUSH/PULL TUBE.
  - INSTALL JAM NUT AND BALL JOINT INTO EACH AILERON PUSH/PULL TUBE END.
  - MOUNT LOWER END OF MAIN AILERON PUSH/PULL TUBE ASSEMBLY TO CONTROL MIXER (SINGLE PLACE) OR MASTER AILERON DRIVER (TWO PLACE).
  - MOUNT WING TO FUSELAGE.
  - MOUNT UPPER END OF MAIN AILERON PUSH/PULL TUBE ASSEMBLY TO CENTER AILERON TORQUE TUBE DRIVERS. THE BALL JOINT SHOULD GO BETWEEN THE TWO AILERON TORQUE TUBE DRIVERS.

		<b>TITAN AIRCRAFT SUPPLY</b>	
		1419 STATE ROUTE 45 SOUTH AUSTINBURG, OHIO 44010	
DETAIL NAME		MAIN AILERON PUSH/PULL TUBE INSTALLATION	
DRAWN	J. PRESTON	DATE	1/6/93
CHECKED		DATE	
APPROVED		DATE	
SCALE		N/A	
PART NO.		DRAWING NO.	
ASSEMBLY NAME		DRAWING NO. <b>B 92-INS-0333-A</b>	