

REVISIONS

E.C. NO.	REV.	DESCRIPTION	BY	DATE
1096	B	PART # TF92-87 WAS TC92-186	K.B.	5/97
1843	C	ADDED PART NUMBERS	KL	3/01

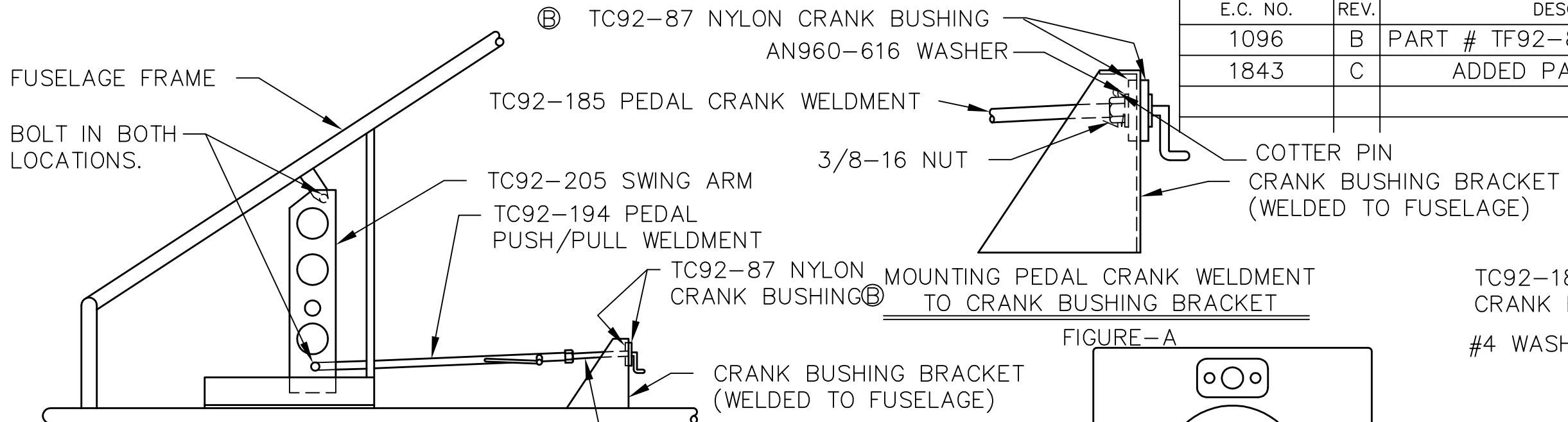
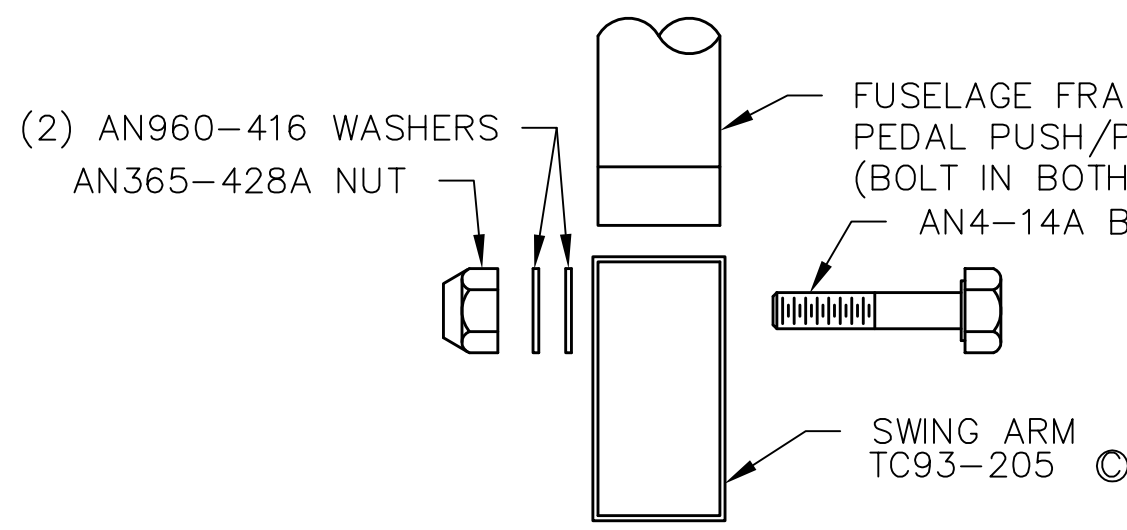
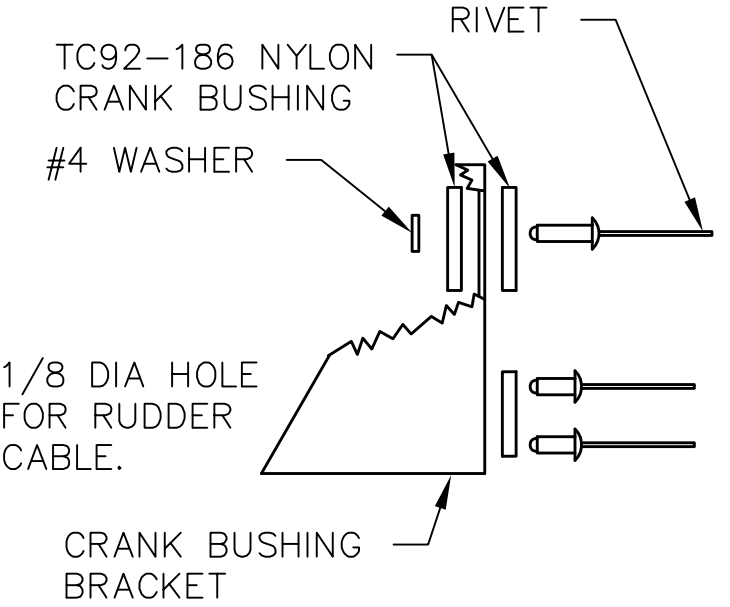
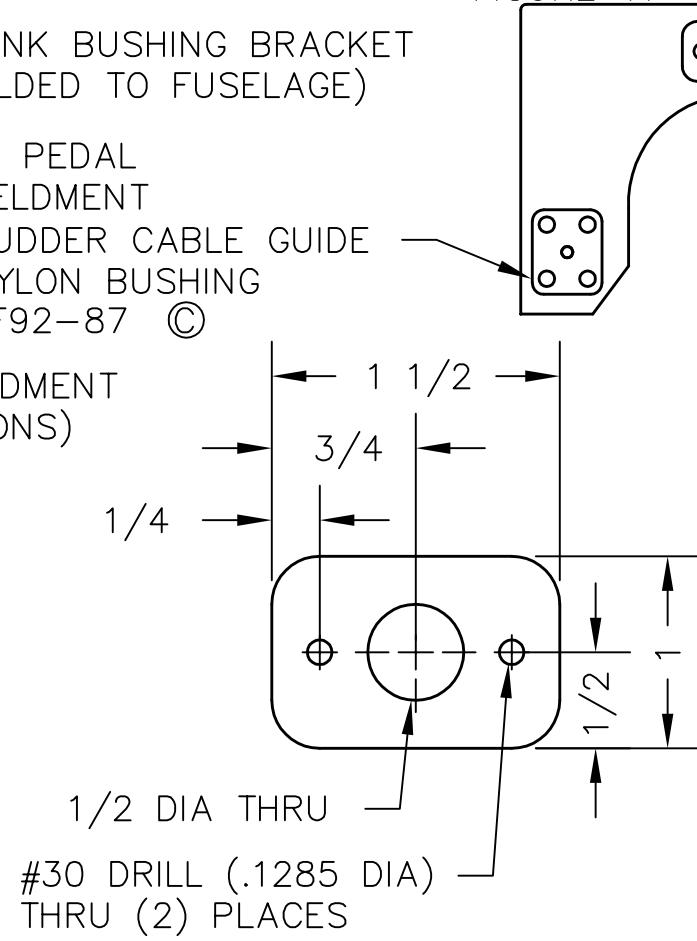


FIGURE-A



BOLTING DETAIL

- SWING ARM INSTALLATION NOTES:
- MOUNT (2) NYLON CRANK BUSHINGS TO CRANK BUSHING BRACKET.
 - MOUNT PEDAL CRANK WELDMENT TO PEDAL CRANK BRACKET AS SHOWN IN FIG-A. DRILL AND COTTER PIN 3/8-16 STOP NUT ON FINAL ASSEMBLY. SCREW PEDAL CRANK WELDMENT INTO PEDAL PUSH/PULL WELDMENT.
 - BOLT SWING ARM TO FUSELAGE FRAME.
 - BOLT PEDAL PUSH/PULL WELDMENT TO SWING ARM.



TC92-186 NYLON CRANK BUSHING DRILL DETAILS

- NYLON INSTALLATION NOTES:
- ALL DIMENSIONS ARE INCHES.
 - DRILL (2) NYLON BUSHINGS AS SHOWN.
 - DRILL #30 DRILL (.1285 DIA) MOUNTING HOLES THRU CRANK BUSHING BRACKET. USE EXISTING HOLES IN NYLON AS A GUIDE. BE SURE THE 1/2 INCH DIA HOLES STAY IN LINE WITH EACH OTHER.
 - RIVET NYLON BUSHINGS TO CRANK BUSHING BRACKET USING SD48BS (1/8 DIA X 41/64 LONG) RIVETS AND #4 FLAT WASHERS, AS SHOWN.

TITAN AIRCRAFT SUPPLY
 1419 STATE ROUTE 45 SOUTH
 AUSTINBURG, OHIO 44010

DETAIL NAME		SWING ARM INSTALLATION	
SCALE	N/A	PART NO.	
ASSEMBLY NAME ADJUSTABLE PEDAL OPTION (2 SEAT ONLY)			
PART NO.		DRAWING NO.	
DRAWING NO.		B 92-INS-0271-C	

DRAWN	J. PRESTON	DATE	2/26/93
CHECKED	R. INGLE	DATE	3/1/01
APPROVED	J. WILLIAMS	DATE	3/1/01

THIS DOCUMENT PROPRIETARY TO TITAN AIRCRAFT, AND IS NOT TO BE USED, CIRCULATED, REPRODUCED, COPIED, OR DISCLOSED IN ANY MANNER WITHOUT PRIOR WRITTEN PERMISSION OF AN AUTHORIZED OFFICIAL OF TITAN AIRCRAFT.