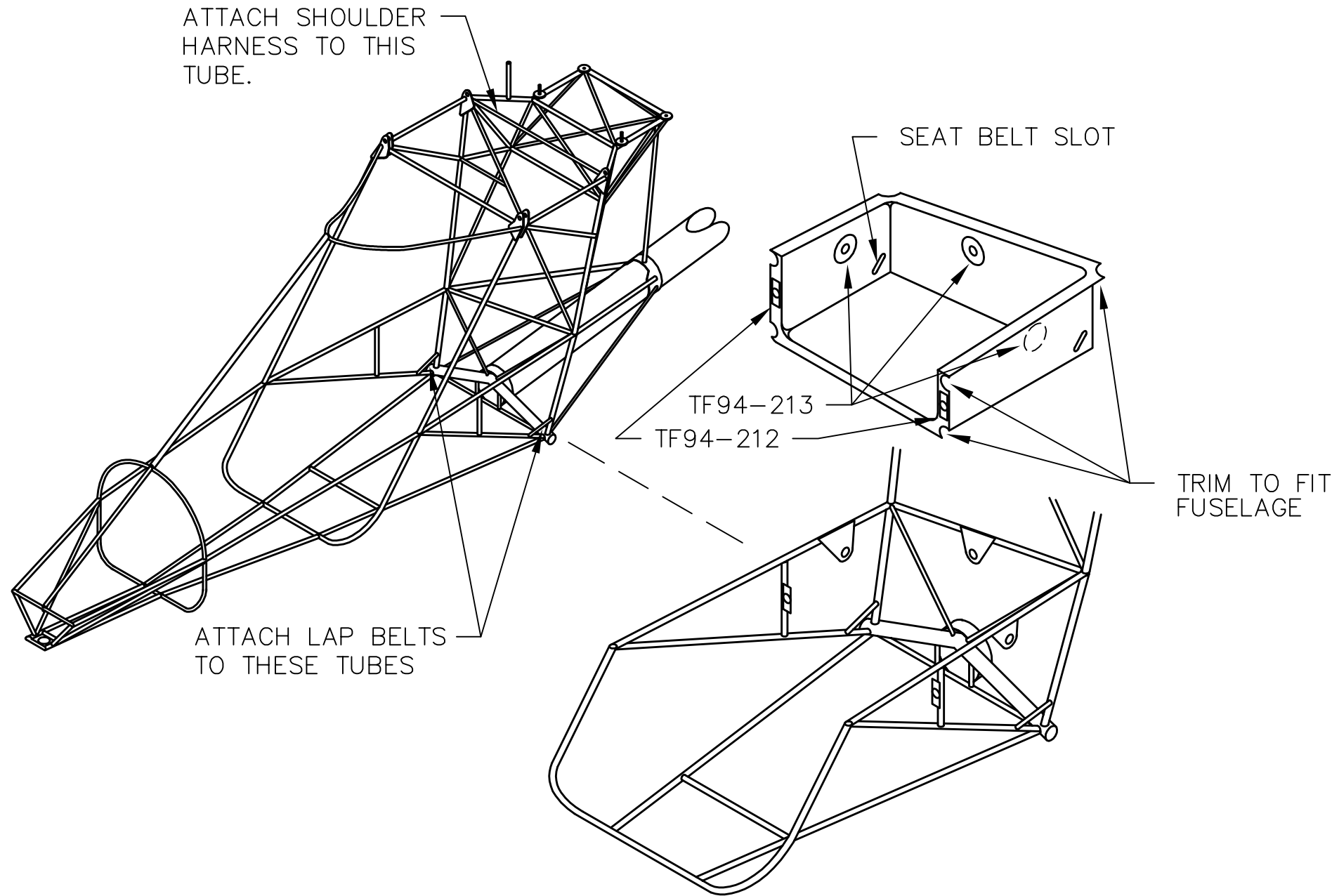


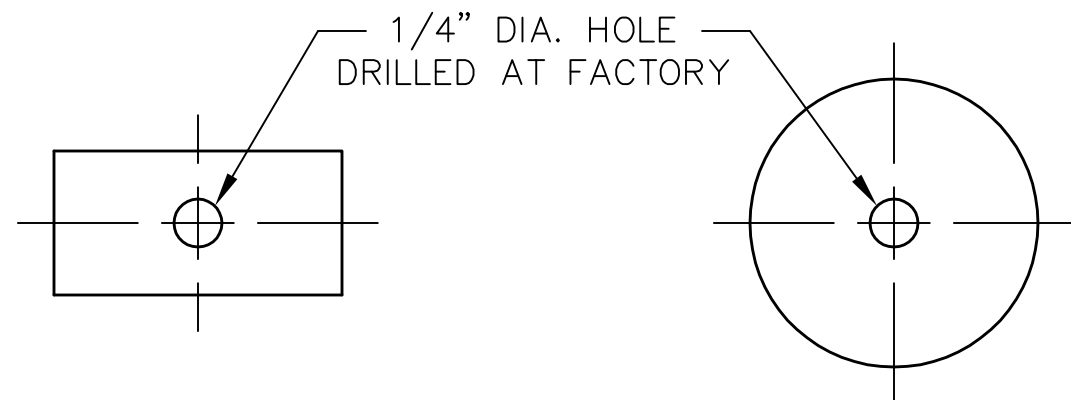
REVISIONS

E.C. NO.	REV.	DESCRIPTION	BY	DATE
1130	C	ASSEMBLY RENAMED	K.B.	6/97



NOTES:

- TRIM SEAT TO FIT INSIDE FUSELAGE.
- TRIM EDGES OF SEAT SO THAT THEY DO NOT EXTEND BEYOND FUSELAGE TUBES.
- WHEN SEAT IS PROPERLY FITTED, USE THE NUTS OF THE FUSELAGE BRACKETS AS A GUIDE AND MARK THE HOLE LOCATIONS ON THE SEAT. DRILL THE HOLES WITH A 1/4" DRILL. (5) ARE REQUIRED.
- CUT A SLOT FOR THE SEATBELTS APPROXIMATELY 2.500 INCHES LONG X .250 INCHES WIDE.
- INSTALL SEAT BELTS BEFORE PERMANENTLY INSTALLING SEAT.
- TO LEAVE ACCESS FOR CONTROL CABLE ADJUSTMENTS, DO NOT INSTALL SEAT UNTIL INITIAL TEST FLIGHTS HAVE BEEN COMPLETED.
- INSTALL REAR SEAT WITH 1/4-20 X 3/4" BOLTS, USING THE TF94-212 FRONT PLATES AND TF94-213 SIDE PLATES AS "WASHERS" BETWEEN THE BOLT HEAD AND SEAT.



TF94-212  
REAR SEAT FRONT PLATE

TF92-213  
REAR SEAT SIDE PLATE

**TITAN AIRCRAFT SUPPLY**  
**TITAN AIRCRAFT**  
 1419 STATE ROUTE 45 SOUTH  
 AUSTINBURG, OHIO 44010

DETAIL NAME		REAR SEAT INSTALLATION	
SCALE	N/A	PART NO.	
ASSEMBLY NAME SINGLE PLACE TORNADO WITH JUMP SEAT			
PART NO.		DRAWING NO.	
DRAWING NO.		B 92-INS-0270-C	

DRAWN	J. PRESTON	DATE	10/6/92
CHECKED	B. PASSAFIUME	DATE	7/1/97
APPROVED	J. SUTCH	DATE	7/1/97

THIS DOCUMENT PROPRIETARY TO TITAN AIRCRAFT, AND IS NOT TO BE USED, CIRCULATED, REPRODUCED, COPIED, OR DISCLOSED IN ANY MANNER WITHOUT PRIOR WRITTEN PERMISSION OF AN AUTHORIZED OFFICIAL OF TITAN AIRCRAFT.