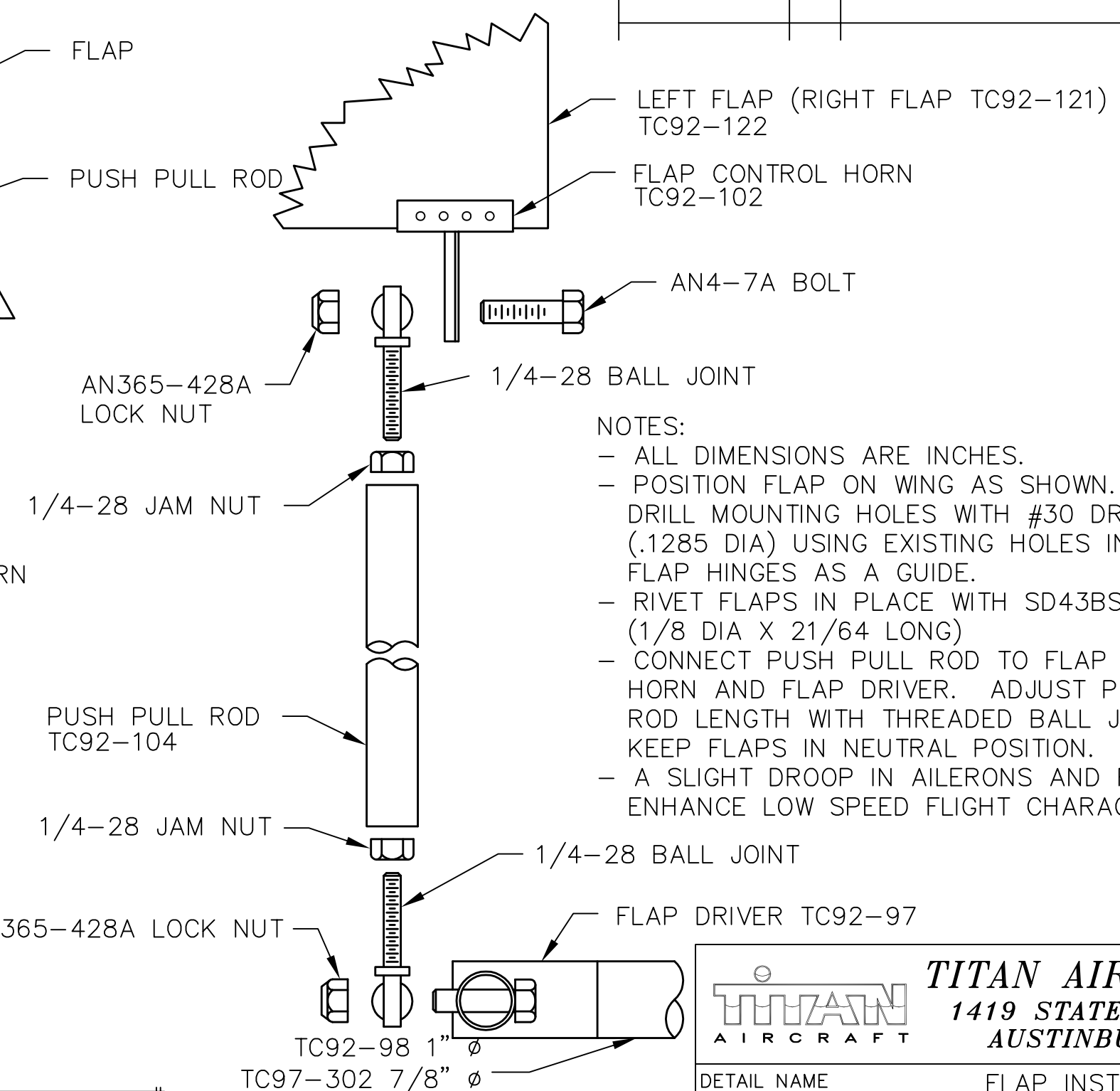
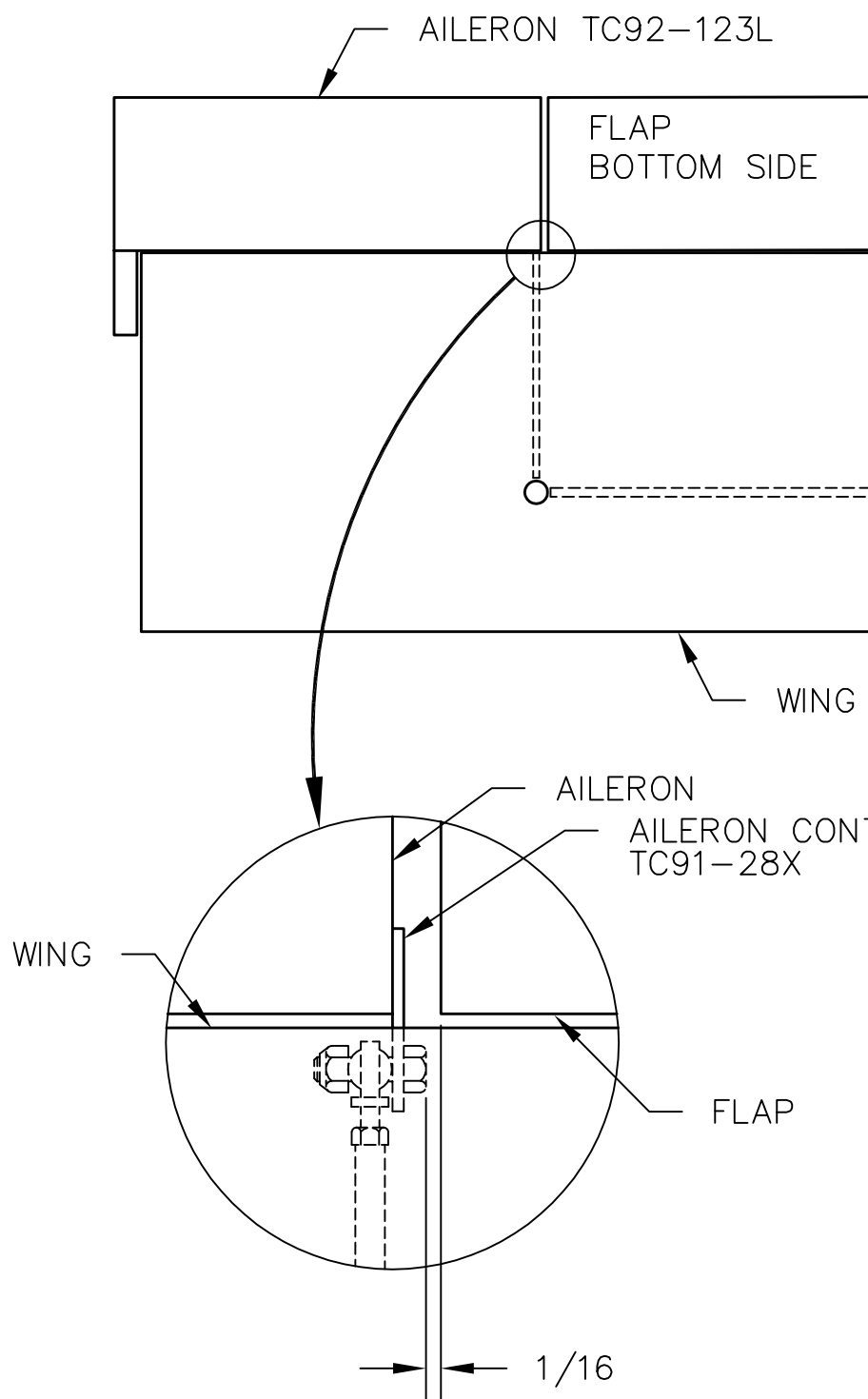


REVISIONS

E.C. NO.	REV.	DESCRIPTION	BY	DATE
	A	DRAWING RELEASED	JP	2/92
1815	B	MADE FLAP FLUSH WITH WING	KL	2/01



NOTES:

- ALL DIMENSIONS ARE INCHES.
- POSITION FLAP ON WING AS SHOWN. DRILL MOUNTING HOLES WITH #30 DRILL (.1285 DIA) USING EXISTING HOLES IN FLAP HINGES AS A GUIDE.
- RIVET FLAPS IN PLACE WITH SD43BS RIVETS. (1/8 DIA X 21/64 LONG)
- CONNECT PUSH PULL ROD TO FLAP CONTROL HORN AND FLAP DRIVER. ADJUST PUSH PULL ROD LENGTH WITH THREADED BALL JOINT TO KEEP FLAPS IN NEUTRAL POSITION.
- A SLIGHT DROOP IN AILERONS AND FLAPS MAY ENHANCE LOW SPEED FLIGHT CHARACTERISTICS.

BEFORE EACH FLIGHT MAKE SURE JAM NUTS ARE TIGHT. THIS MUST BE PART OF EVERY PREFLIGHT INSPECTION.

**TITAN AIRCRAFT SUPPLY**  
 1419 STATE ROUTE 45 SOUTH  
 AUSTINBURG, OHIO 44010

DETAIL NAME		FLAP INSTALLATION	
SCALE	N/A	PART NO.	
ASSEMBLY NAME			
PART NO.		DRAWING NO.	
DRAWING NO.		B92-INS-0263-B	

DRAWN	J. PRESTON	DATE	12/15/92
CHECKED	R. INGLE	DATE	3/1/01
APPROVED	J. WILLIAMS	DATE	3/1/01

THIS DOCUMENT PROPRIETARY TO TITAN AIRCRAFT. AND IS NOT TO BE USED, CIRCULATED, REPRODUCED, COPIED, OR DISCLOSED IN ANY MANNER WITHOUT PRIOR WRITTEN PERMISSION OF AN AUTHORIZED OFFICIAL OF TITAN AIRCRAFT.