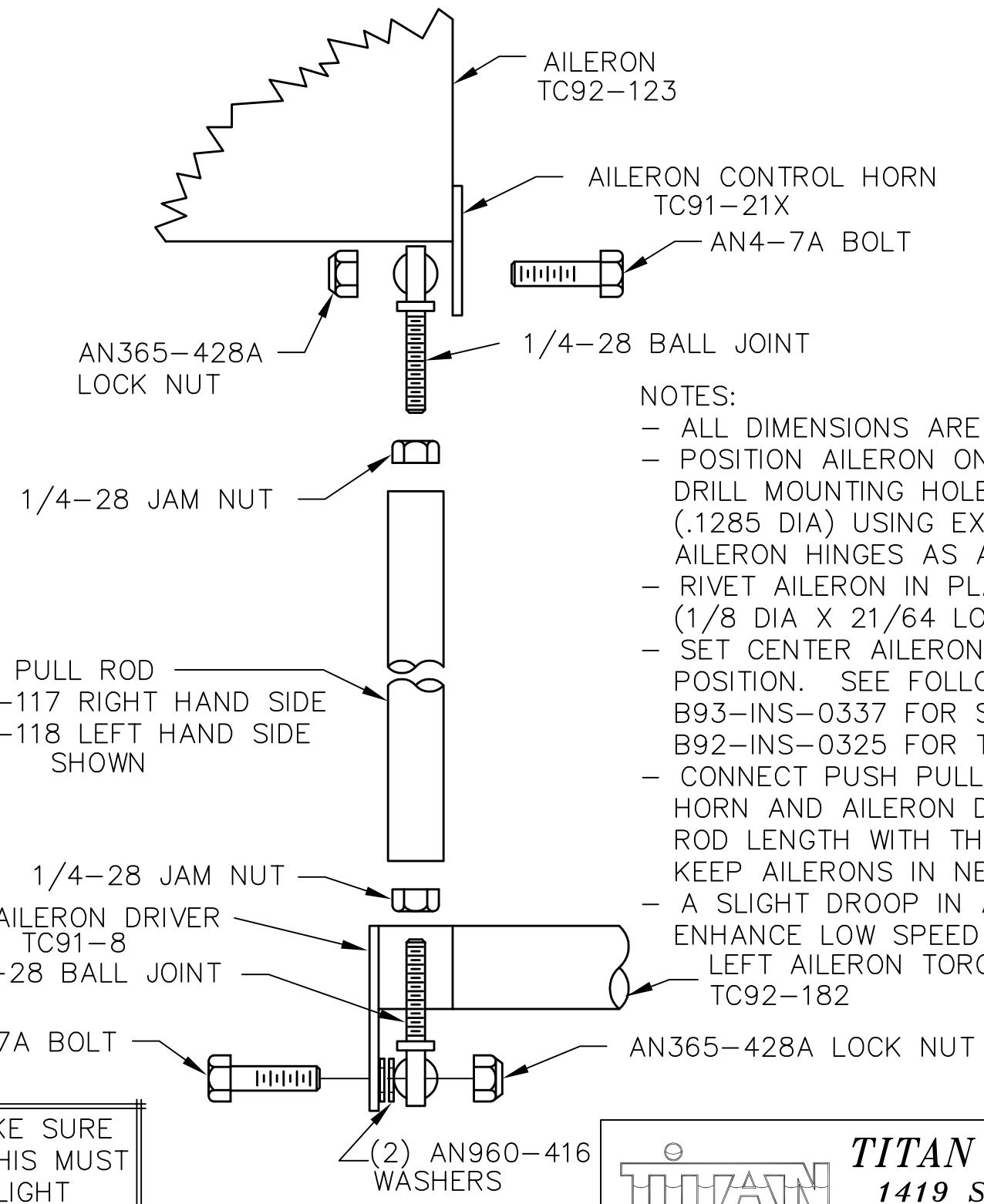
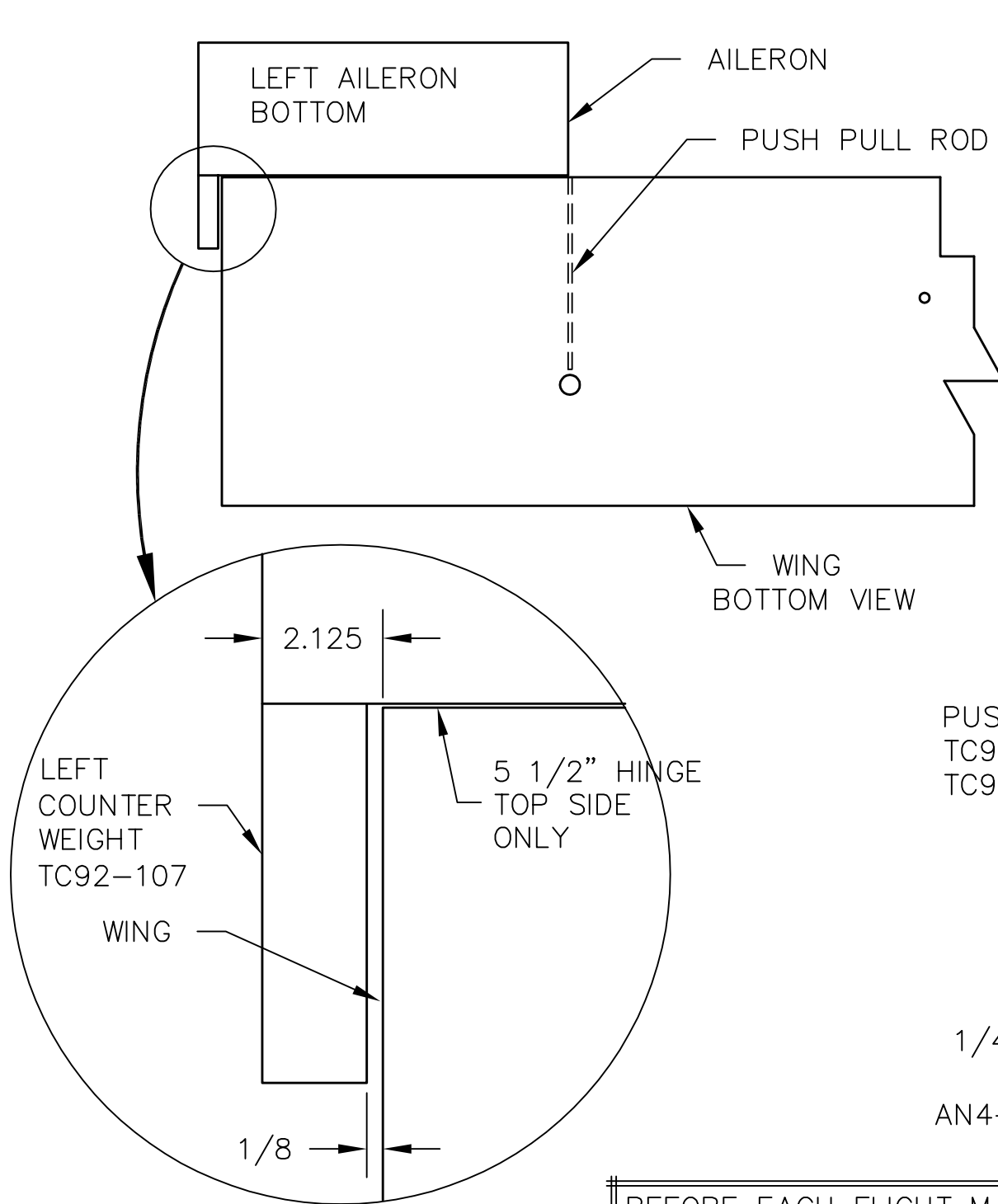


THIS DOCUMENT PROPRIETARY TO TITAN AIRCRAFT, AND IS NOT TO BE USED, CIRCULATED, REPRODUCED, COPIED, OR DISCLOSED IN ANY MANNER WITHOUT PRIOR WRITTEN PERMISSION OF AN AUTHORIZED OFFICIAL OF TITAN AIRCRAFT.



- NOTES:
- ALL DIMENSIONS ARE INCHES.
 - POSITION AILERON ON WING AS SHOWN. DRILL MOUNTING HOLES WITH #30 DRILL (.1285 DIA) USING EXISTING HOLES IN AILERON HINGES AS A GUIDE.
 - RIVET AILERON IN PLACE WITH SD43BS RIVETS. (1/8 DIA X 21/64 LONG)
 - SET CENTER AILERON DRIVER IN NEUTRAL POSITION. SEE FOLLOWING DRAWINGS: B93-INS-0337 FOR SINGLE PLACE TORNADO OR B92-INS-0325 FOR TWO PLACE TORNADO.
 - CONNECT PUSH PULL ROD TO AILERON CONTROL HORN AND AILERON DRIVER. ADJUST PUSH PULL ROD LENGTH WITH THREADED BALL JOINT TO KEEP AILERONS IN NEUTRAL POSITION.
 - A SLIGHT DROOP IN AILERONS AND FLAPS MAY ENHANCE LOW SPEED FLIGHT CHARACTERISTICS.
- LEFT AILERON TORQUE TUBE TC92-182

BEFORE EACH FLIGHT MAKE SURE JAM NUTS ARE TIGHT. THIS MUST BE PART OF EVERY PREFLIGHT INSPECTION.

TITAN AIRCRAFT SUPPLY
 1419 STATE ROUTE 45 SOUTH
 AUSTINBURG, OHIO 44010

DRAWN J. PRESTON		DATE 1/6/93		DETAIL NAME AILERON INSTALLATION	
CHECKED R. INGLE		DATE 11/14/00		SCALE N/A	PART NO.
APPROVED J. WILLIAMS		DATE 11/14/00		ASSEMBLY NAME	
				PART NO.	DRAWING NO.
				DRAWING NO. B92-INS-0262-C	