

REVISIONS				
E.C. NO.	REV.	DESCRIPTION	BY	DATE
	A	DRAWING RELEASED	JP	9/92
	B	HINGE HOLES WERE PREDRILLED	K.B.	8/95
1538	C	UPDATED TITLE BLOCK	KL	11/00
2090	D	ADDED EXTRUDED HINGE P/N	KL	10/02

TC91-28X
AILERON CONTROL HORN
(FACTORY INSTALLED)

TC92-142 (ROLLED)
TC95-260 (EXTRUDED[Ⓧ])
USED IN VNE PACKAGE)
5 1/2" HINGE
POSITION FLUSH WITH
EDGE OF AILERON
TOP SIDE

DOUBLER
(FACTORY INSTALLED)

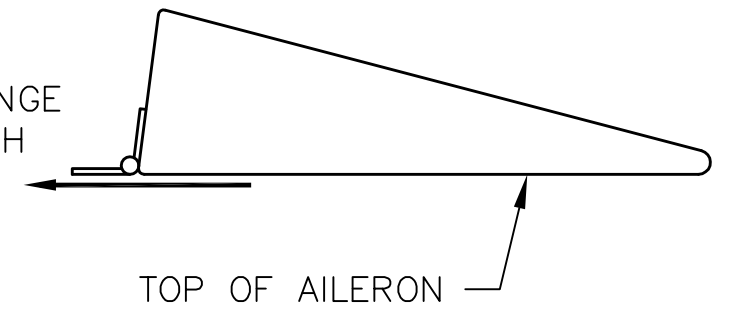
- NOTES:
- ALL DIMENSIONS ARE INCHES.
 - SEE 5 1/2" HINGE TEMPLATE FOR DRILL PATTERN.
 - DRILL ALL MOUNTING HOLES WITH #30 DRILL (.1285 DIA). USE HINGE TEMPLATE AS A GUIDE. DRILL COUNTER WEIGHT HOLES IN PATTERN SHOWN.
 - RIVET WITH SD42BS RIVETS. (.125 DIA X .265 LONG)

DOUBLER
(FACTORY INSTALLED)

TC92-142 (ROLLED)
TC95-260 (EXTRUDED[Ⓧ])
USED IN VNE PACKAGE)
5 1/2" HINGE
TOP SIDE

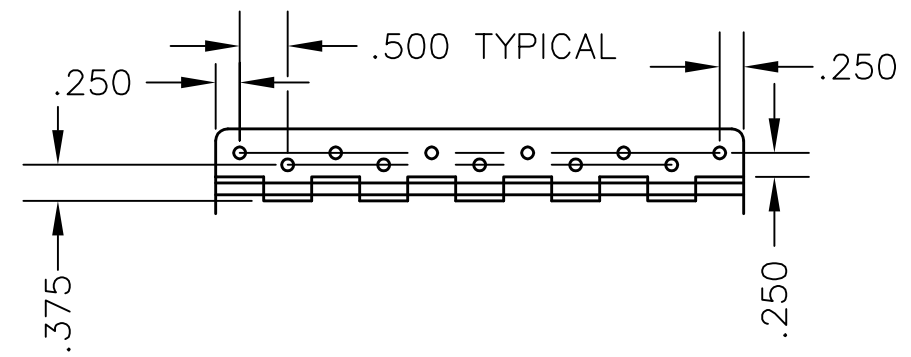
COUNTER WEIGHT
BOTTOM SIDE

AILERON AND HINGE
MUST BE FLUSH



AILERON

RIGHT AILERON
SHOWN UP SIDE DOWN



VIEW A: HINGE DRILL DIMENSIONS(SEE TEMPLATE)
BOTH SIDES OF HINGE TYPICAL

TITAN AIRCRAFT SUPPLY
1419 STATE ROUTE 45 SOUTH
AUSTINBURG, OHIO 44010

DETAIL NAME		AILERON ASSEMBLY						
DRAWN	J. PRESTON	DATE	9/2/92	SCALE	N/A	PART NO.	TC92-123 RH. & LH.	
CHECKED	GAT	DATE	1/21/03	ASSEMBLY NAME				TORNADO WING ASSEMBLY
APPROVED		JW	DATE	1/22/03	PART NO.		DRAWING NO.	
					DRAWING NO. B 92-INS-0258-D			

THIS DOCUMENT PROPRIETARY TO TITAN AIRCRAFT, AND IS NOT TO BE USED, CIRCULATED, REPRODUCED, COPIED, OR DISCLOSED IN ANY MANNER WITHOUT PRIOR WRITTEN PERMISSION OF AN AUTHORIZED OFFICIAL OF TITAN AIRCRAFT.