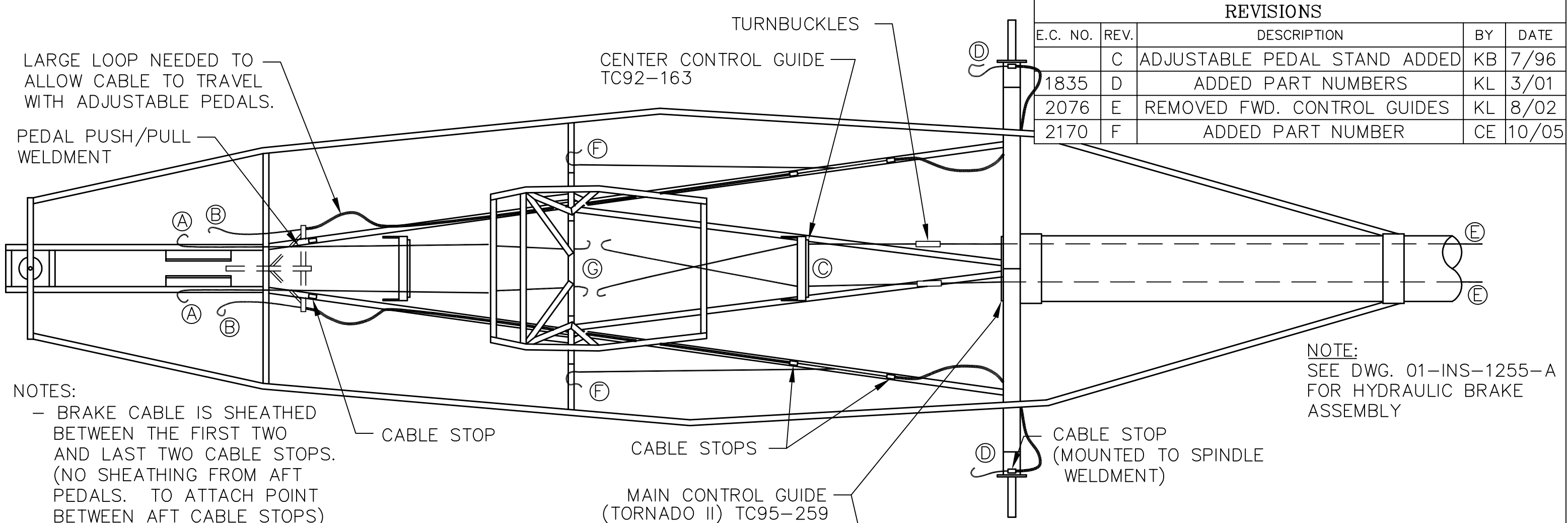


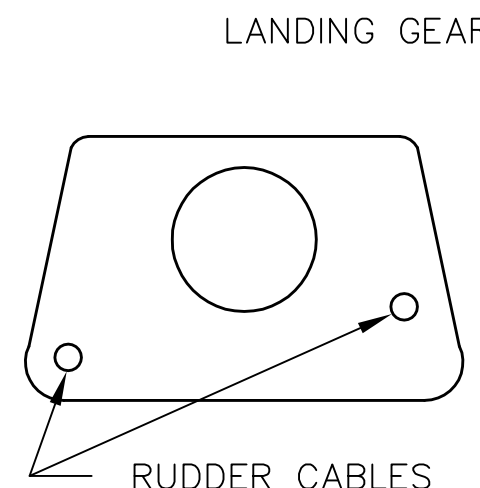
THIS DOCUMENT PROPRIETARY TO TITAN AIRCRAFT, AND IS NOT TO BE USED, CIRCULATED, REPRODUCED, COPIED, OR DISCLOSED IN ANY MANNER WITHOUT PRIOR WRITTEN PERMISSION OF AN AUTHORIZED OFFICIAL OF TITAN AIRCRAFT.

REVISIONS

E.C. NO.	REV.	DESCRIPTION	BY	DATE
	C	ADJUSTABLE PEDAL STAND ADDED	KB	7/96
1835	D	ADDED PART NUMBERS	KL	3/01
2076	E	REMOVED FWD. CONTROL GUIDES	KL	8/02
2170	F	ADDED PART NUMBER	CE	10/05

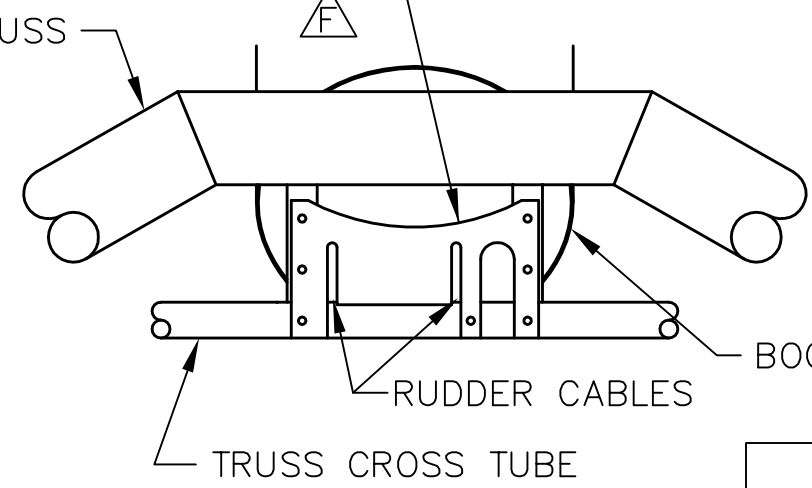


- NOTES:**
- BRAKE CABLE IS SHEATHED BETWEEN THE FIRST TWO AND LAST TWO CABLE STOPS. (NO SHEATHING FROM AFT PEDALS. TO ATTACH POINT BETWEEN AFT CABLE STOPS)
 - NICO CABLE FROM AFT BRAKE PEDALS TO THE MAIN BRAKE CABLE. CENTER NICO ON THE UNSHEATHED SECTION OF CABLE. NICO MUST BE SLIPPED ONTO THE MAIN BRAKE CABLE DURING ITS INSTALLATION.
 - TIE WRAP SHEATHING TO FUSELAGE FRAME.
 - ROUTE BRAKE CABLE UNDER GEAR LEG TUBE BUT OVER ITS CROSS TUBE.
 - TO PREVENT BRAKE CABLE FROM BINDING, AVOID SHARP BENDS IN SHEATHING.
 - POSITION CONTROL CABLE TURNBUCKLES SO THEY DO NOT COLLIDE WITH THE CABLE GUIDES AT FULL DEFLECTION.
 - SEE ASSEMBLY DRAWINGS FOR MOUNTING CABLES TO COMPONENTS.



NOTE: RUDDER CABLES CROSS, THEREFORE THESE HOLES MUST BE DRILLED AT DIFFERENT LEVELS. ENSURE CABLES DO NOT RUB ANY OTHER SURFACE, INCLUDING THEMSELVES.

CENTER CONTROL GUIDE



FRONT VIEW
MAIN CONTROL GUIDE

CABLE TERMINATION POINTS

SYMBOL	LOCATION
(A)	RUDDER PEDALS
(B)	BRAKE PEDALS
(C)	ELEVATOR DRIVER WELDMENT
(D)	BRAKE ACTUATING ARM
(E)	TO RUDDER CONTROL ARM
(F)	AFT BRAKE PEDALS
(G)	AFT RUDDER PEDAL DRIVERS

TITAN AIRCRAFT SUPPLY
 1419 STATE ROUTE 45 SOUTH
 AUSTINBURG, OHIO 44010

DETAIL NAME		FUSELAGE CABLE ROUTING	
SCALE	N/A	PART NO.	N/A
ASSEMBLY NAME		TWO PLACE TORNADOS	
PART NO.	N/A	DRAWING NO.	
DRAWING NO.		B 92-INS-0236-F	

DRAWN	J. PRESTON	DATE	3/8/93
CHECKED	GAT	DATE	10/4/05
APPROVED	JW	DATE	10/5/05