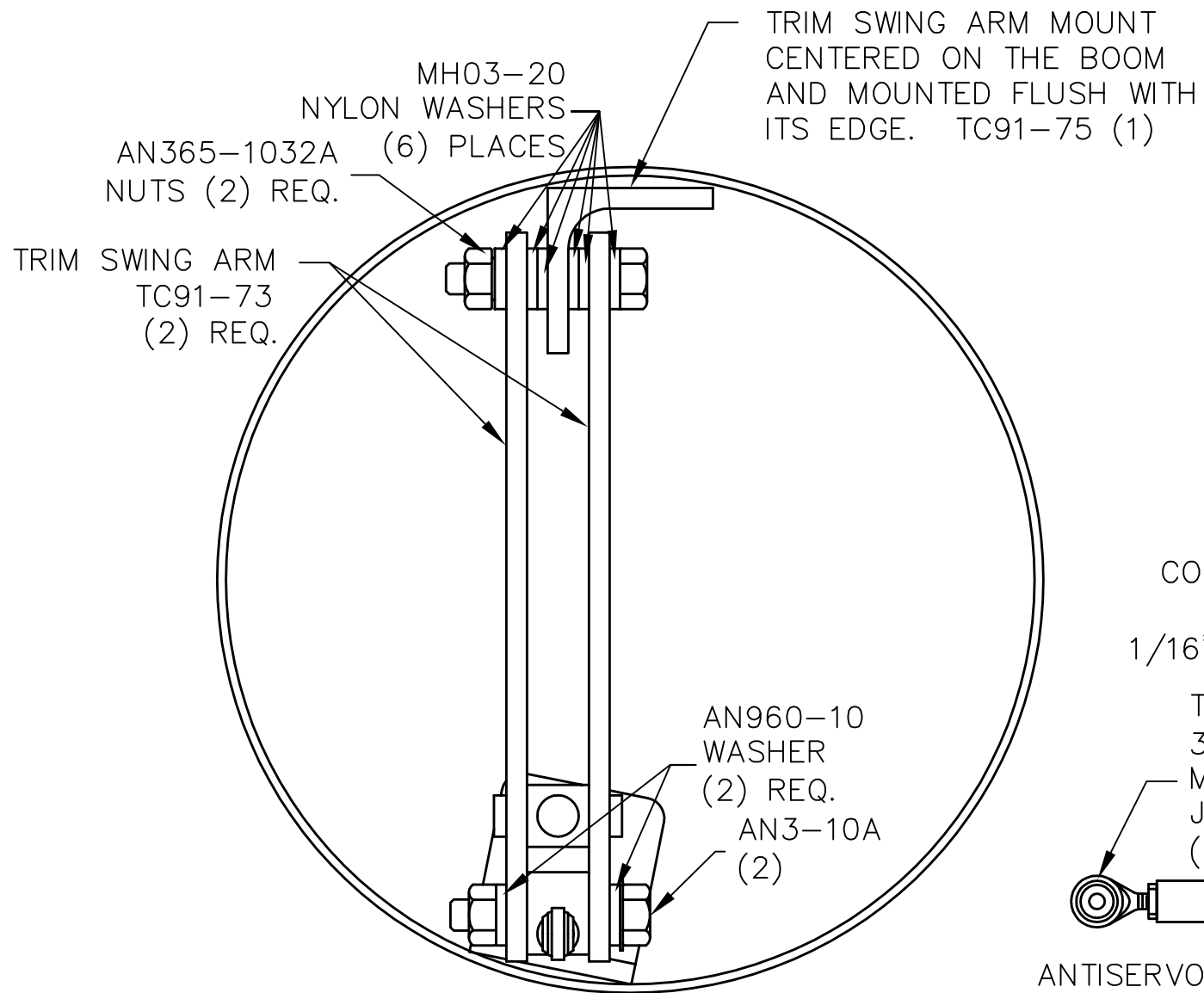


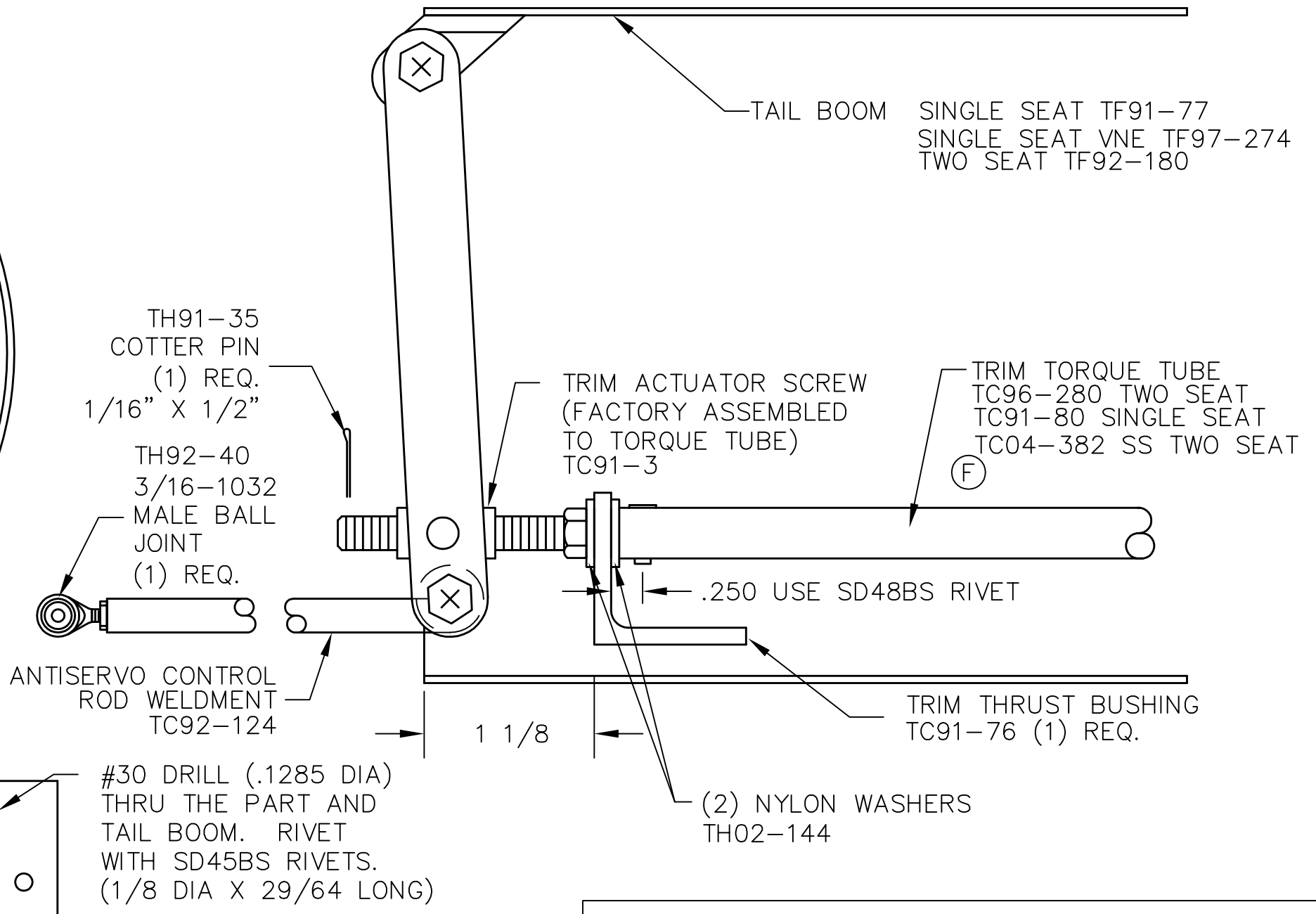
REVISIONS

E.C. NO.	REV.	DESCRIPTION	BY	DATE
1825	D	ADDED PART NUMBERS	KL	3/01
2047	E	ADDED .250 DIM. AND NYLON WASHERS	KL	1/02
2144	F	ADDED PART NUMBER	CE	5/04

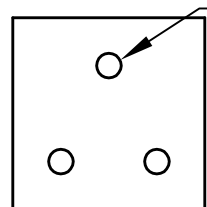


ASSEMBLY NOTES:

- DIMENSIONS ARE INCHES.
- SAND A RADIUS IN THE EDGES OF THE TRIM THRUST BUSHING AND TRIM SWING ARM MOUNT TO OBTAIN A PROPER FIT INSIDE THE TAIL BOOM.
- THE TRIM THRUST BUSHING IS TO BE MOUNTED SLIGHTLY UP THE SIDE OF THE TAIL BOOM AS SHOWN. POSITION FOR SMOOTHEST OPERATION. (DO NOT ADJUST THE 1 1/8 INCH DIMENSION)
- BOLT WITH (2) AN3-10A BOLTS, (2) AN365-1032A NUTS AND (8) AN960-10 WASHERS. (5) OF THE WASHERS ARE USED TO MOUNT THE TRIM SWING ARM TO THE TRIM SWING ARM MOUNT.
- INSERT COTTER PIN INTO END OF TRIM ACTUATOR SCREW.



MOUNTING DIAGRAM FOR TRIM THRUST BUSHING AND TRIM SWING ARM MOUNT



TITAN AIRCRAFT SUPPLY
1419 STATE ROUTE 45 SOUTH
AUSTINBURG, OHIO 44010

DETAIL NAME ANTI-SERVO CONTROL ASSEMBLY

DRAWN K. LIPLIN DATE 12/28/01 SCALE N/A PART NO. N/A

CHECKED DATE ASSEMBLY NAME ALL TORNADO AIRCRAFT

APPROVED DATE PART NO. N/A DRAWING NO.

DRAWING NO. 92-INS-0181-F

THIS DOCUMENT PROPRIETARY TO TITAN AIRCRAFT, AND IS NOT TO BE USED, CIRCULATED, REPRODUCED, COPIED, OR DISCLOSED IN ANY MANNER WITHOUT PRIOR WRITTEN PERMISSION OF AN AUTHORIZED OFFICIAL OF TITAN AIRCRAFT.