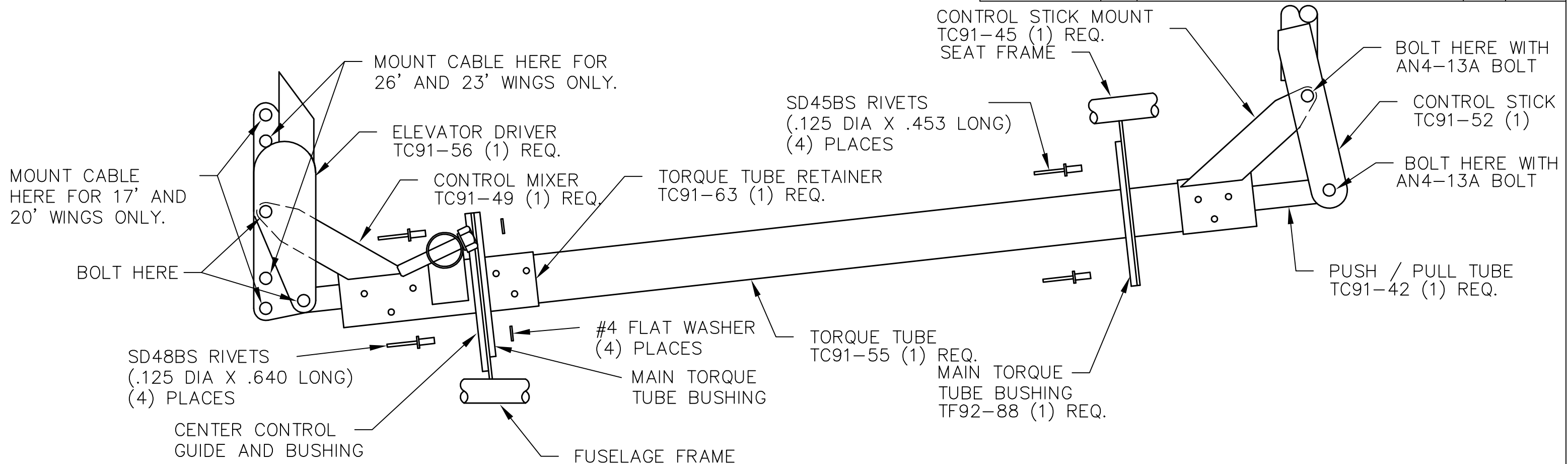


REVISIONS				
E.C. NO.	REV.	DESCRIPTION	BY	DATE
	B	CHANGED ELEVATOR DRIVER	K.B.	9/95
1904	C	ADDED PART NUMBERS	KL	3/01



NOTES:

- NYLON BUSHINGS SHOULD BE POSITIONED SO THAT THE TORQUE TUBE DOES NOT RIDE ON ANY METAL SURFACE.
- DRILL THRU BUSHINGS WITH #30 DRILL (.1285 DIA). DRILL AT EACH CORNER LEAVING ADEQUATE EDGE DISTANCE AND NOT ALLOWING ANY OF THE MOVING PARTS TO RIDE ON THE RIVETS AND WASHERS.
- CONTROL MIXER AND TORQUE TUBE RETAINER SHOULD SANDWICH AFT BUSHINGS.
- CONTROL STICK MOUNT SHOULD BE MOUNTED FLUSH WITH END OF TORQUE TUBE.
- RIVET CONTROL MIXER AND CONTROL STICK MOUNT THROUGH THE FACTORY DRILLED RIVET HOLES. RIVET WITH SD42BS RIVETS (.125 DIA X .265 LONG).
- WITH RETAINER SANDWICHING THE AFT BUSHINGS, DRILL (6) RIVET HOLES THRU RETAINER AND TORQUE TUBE USING #30 DRILL (.1285 DIA). FOLLOW RIVET PATTERN SHOWN. DO NOT PUT RIVETS THROUGH THE TOP OR BOTTOM OF THE TORQUE TUBE. RIVET WITH SD42BS RIVETS (.125 DIA X .265 LONG).
- BOLT USING AN4-13A BOLTS, AN365-428A NUTS AND AN960-416 WASHERS.
- MOUNT CABLES USING THE CLEVIS AND PIN METHOD.

THIS DOCUMENT PROPRIETARY TO TITAN AIRCRAFT, AND IS NOT TO BE USED, CIRCULATED, REPRODUCED, COPIED, OR DISCLOSED IN ANY MANNER WITHOUT PRIOR WRITTEN PERMISSION OF AN AUTHORIZED OFFICIAL OF TITAN AIRCRAFT.

TITAN AIRCRAFT SUPPLY
1419 STATE ROUTE 45 SOUTH
AUSTINBURG, OHIO 44010

DETAIL NAME		CONTROL STICK ASSEMBLY	
SCALE	N/A	PART NO.	N/A
ASSEMBLY NAME SINGLE PLACE TORNADO AND U/L 103			
PART NO.	N/A	DRAWING NO.	
DRAWING NO.		B 92-INS-0180-C	

DRAWN	J. PRESTON	DATE	5/17/93
CHECKED	R. INGLE	DATE	3/27/01
APPROVED	J. WILLIAMS	DATE	3/27/01