

THIS DOCUMENT PROPRIETARY TO TITAN AIRCRAFT, AND IS NOT TO BE USED, CIRCULATED, REPRODUCED, COPIED, OR DISCLOSED IN ANY MANNER WITHOUT PRIOR WRITTEN PERMISSION OF AN AUTHORIZED OFFICIAL OF TITAN AIRCRAFT.

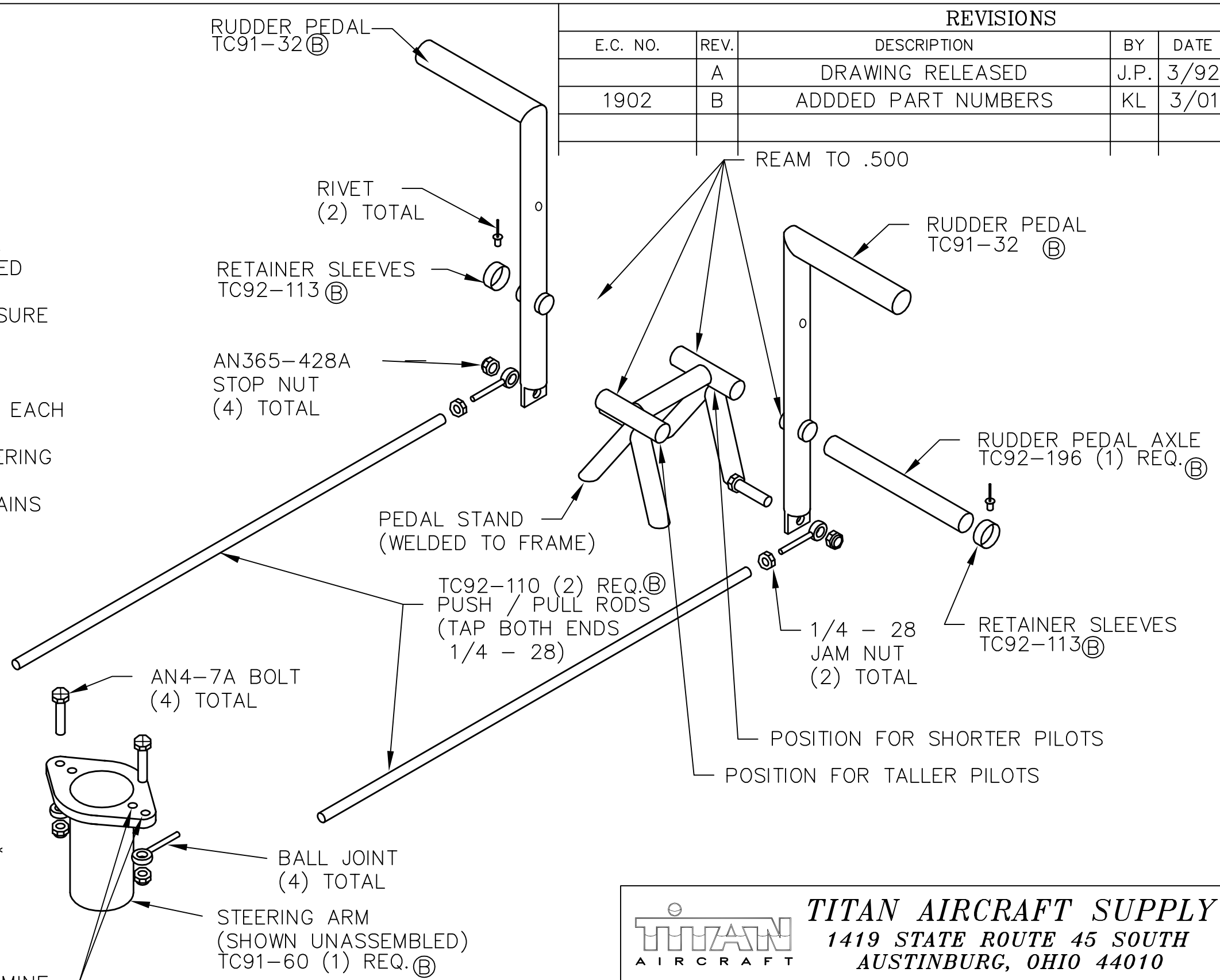
PUSH / PULL ROD ASSEMBLY NOTES:

- RUDDER PEDAL ASSEMBLY AND NOSE FORK ASSEMBLY MUST BE COMPLETED FIRST.
- IF RUDDER PEDALS ARE IN THE FORWARD MOST POSITION THEN 3.500 INCHES MUST BE TRIMED FROM THE PUSH / PULL RODS.
- BOTH PUSH / PULL RODS MUST BE TAPPED 1/4 - 28 AT EACH END.
- CLAMP RUDDER PEDALS TOGETHER TO ASSURE BOTH REMAIN IN THE NEUTRAL POSITION.
- ROTATE NOSE FORK IN THE STRAIGHT FORWARD POSITION.
- INSERT BALL JOINTS WITH JAM NUTS INTO EACH END OF THE PUSH / PULL RODS. BOLT PUSH RODS TO RUDDER PEDALS AND STEERING ARM SO THAT PEDALS ARE IN A VERTICAL POSITION AND NOSE FORK ASSEMBLY REMAINS IN THE STRAIGHT FORWARD POSITION.
- TIGHTEN DOWN JAM NUTS.

PEDAL ASSEMBLY NOTES:

- PEDAL STAND ONLY NEEDS TO BE REAMED AT THE DESIRED PEDAL POSITION.
- SLIDE PEDAL AXLE THROUGH PEDAL STAND THEN SLIDE THE PEDALS ONTO THE AXLE. SLIDE RETAINING SLEEVES ONTO THE AXLE SO THAT THEY HOLD THE PEDALS FIRMLY INTO PLACE.
- ** PEDALS SHOULD STILL SWING FREELY **
- DRILL THROUGH ONE WALL ON RETAINER AND AXLE WITH #30 (.1285 DIA) DRILL. RIVET WITH SD42BS RIVETS.

THESE HOLES DETERMINE THE STEERING RATIO. (INNER HOLES HAVE A TIGHTER TURNING RADIUS AND OUTER HOLES HAVE A WIDER TURNING RADIUS)



REVISIONS				
E.C. NO.	REV.	DESCRIPTION	BY	DATE
	A	DRAWING RELEASED	J.P.	3/92
1902	B	ADDED PART NUMBERS	KL	3/01

TITAN AIRCRAFT SUPPLY
 1419 STATE ROUTE 45 SOUTH
 AUSTINBURG, OHIO 44010

DETAIL NAME		RUDDER PEDAL ASSEMBLY INSTRUCTIONS		
SCALE	N/A	PART NO.		N/A
ASSEMBLY NAME		SINGLE SEAT FUSELAGE ASSEMBLY		
PART NO.	N/A	DRAWING NO.		
DRAWING NO.		B 92-INS-0177-B		

DRAWN	J. PRESTON	DATE	3/26/92
CHECKED	R. INGLE	DATE	3/27/01
APPROVED	J. WILLIAMS	DATE	3/27/01