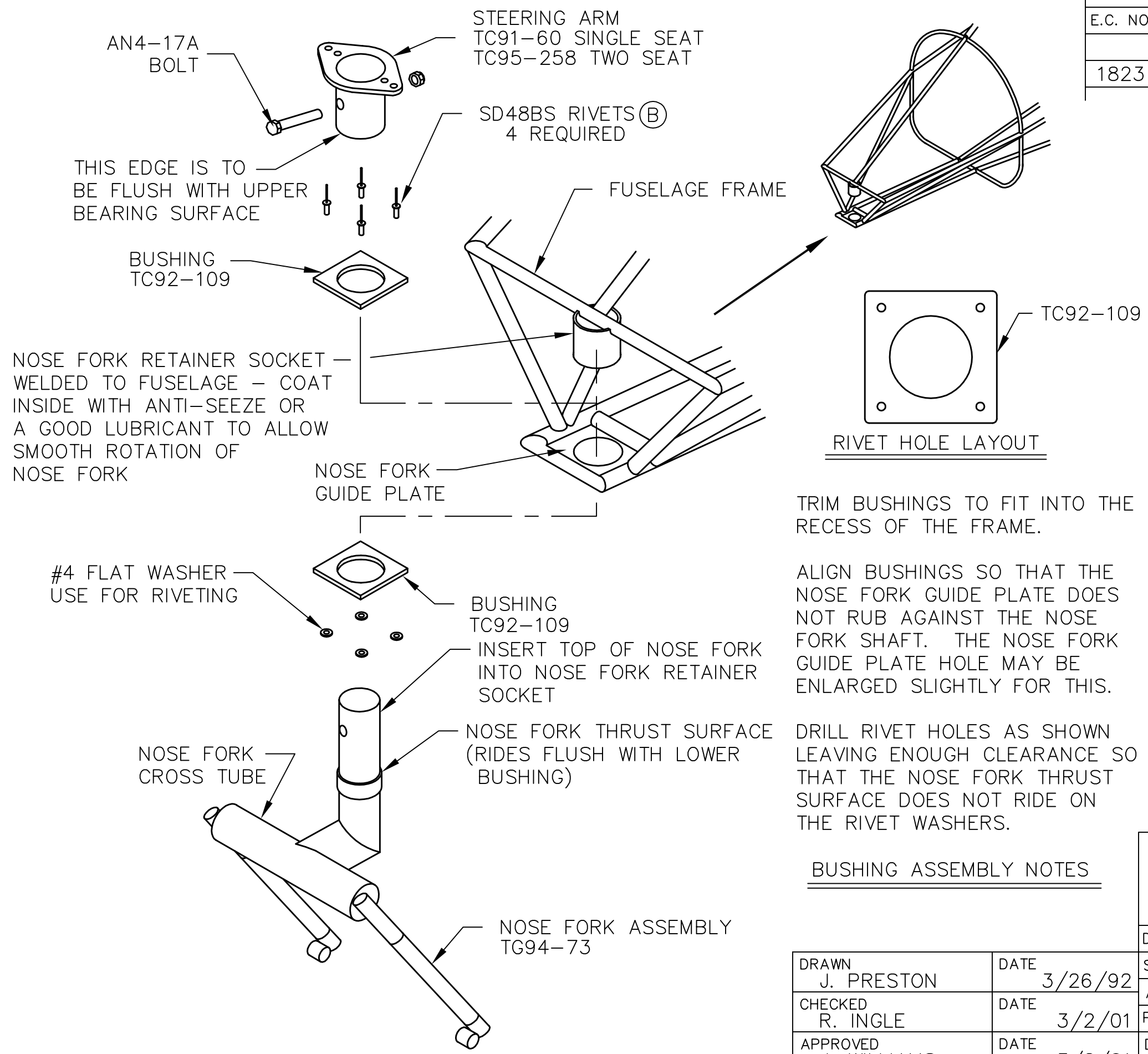


THIS DOCUMENT PROPRIETARY TO TITAN AIRCRAFT, AND IS NOT TO BE USED, CIRCULATED, REPRODUCED, COPIED, OR DISCLOSED IN ANY MANNER WITHOUT PRIOR WRITTEN PERMISSION OF AN AUTHORIZED OFFICIAL OF TITAN AIRCRAFT.

REVISIONS				
E.C. NO.	REV.	DESCRIPTION	BY	DATE
	B	WAS SSD48BS RIVETS	K.B.	9/95
1823	C	ADDED PART NUMBERS	K.L.	3/01



THIS EDGE IS TO BE FLUSH WITH UPPER BEARING SURFACE

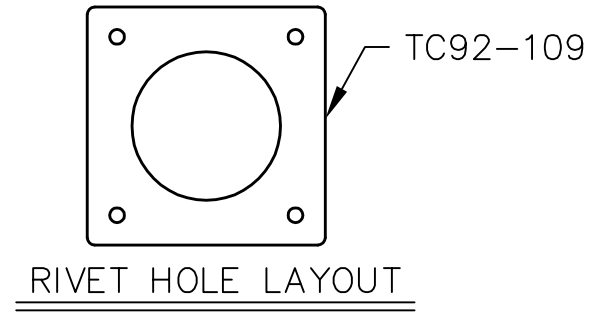
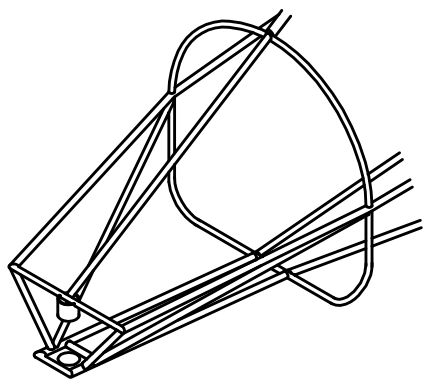
NOSE FORK RETAINER SOCKET — WELDED TO FUSELAGE — COAT INSIDE WITH ANTI-SEEZE OR A GOOD LUBRICANT TO ALLOW SMOOTH ROTATION OF NOSE FORK

#4 FLAT WASHER USE FOR RIVETING

INSERT TOP OF NOSE FORK INTO NOSE FORK RETAINER SOCKET

NOSE FORK THRUST SURFACE (RIDES FLUSH WITH LOWER BUSHING)

NOSE FORK ASSEMBLY TG94-73



TRIM BUSHINGS TO FIT INTO THE RECESS OF THE FRAME.

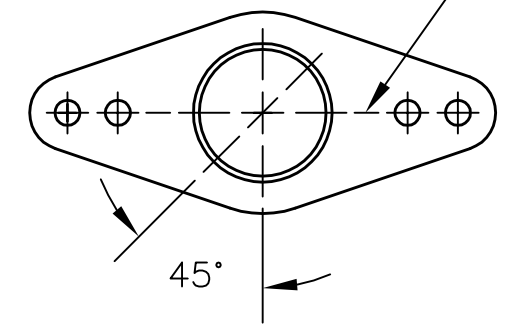
ALIGN BUSHINGS SO THAT THE NOSE FORK GUIDE PLATE DOES NOT RUB AGAINST THE NOSE FORK SHAFT. THE NOSE FORK GUIDE PLATE HOLE MAY BE ENLARGED SLIGHTLY FOR THIS.

DRILL RIVET HOLES AS SHOWN LEAVING ENOUGH CLEARANCE SO THAT THE NOSE FORK THRUST SURFACE DOES NOT RIDE ON THE RIVET WASHERS.

BUSHING ASSEMBLY NOTES

DRAWN J. PRESTON	DATE 3/26/92
CHECKED R. INGLE	DATE 3/2/01
APPROVED J. WILLIAMS	DATE 3/2/01

THIS CENTER LINE IS TO RUN PARALLEL WITH THE NOSE FORK CROSS TUBE.



WHEN BOLTING THE NOSE FORK TO THE STEERING ARM, DRILL 1/4 HOLE AT APPROXIMATELY 45° (AS SHOWN) AND HALFWAY UP THE STEERING ARM. THIS ALLOWS EASIER ACCESS TO THE ASSEMBLY AFTER NOSE CONE HAS BEEN INSTALLED.

BOLT WITH AN4-17A BOLT
AN365-428 NUT
(2) AN960-416 WASHERS

NOSE FORK AND STEERING ARM ASSEMBLY NOTES

TITAN AIRCRAFT SUPPLY
1419 STATE ROUTE 45 SOUTH
AUSTINBURG, OHIO 44010

DETAIL NAME	NOSE FORK ASSEMBLY INSTRUCTIONS		
SCALE	N/A	PART NO.	
ASSEMBLY NAME		ALL TORNADO AIRCRAFT	
PART NO.		DRAWING NO.	
DRAWING NO.		B 92-INS-0176-C	