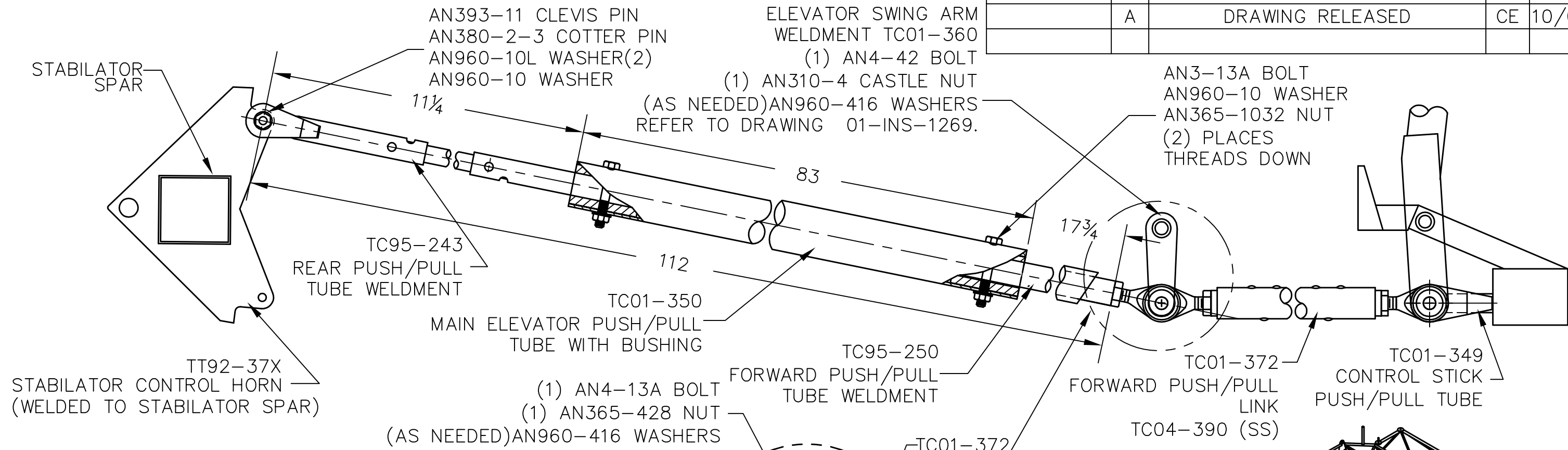
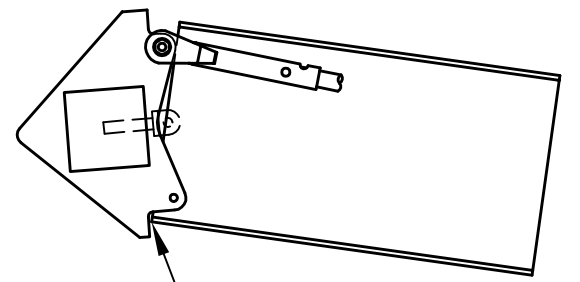
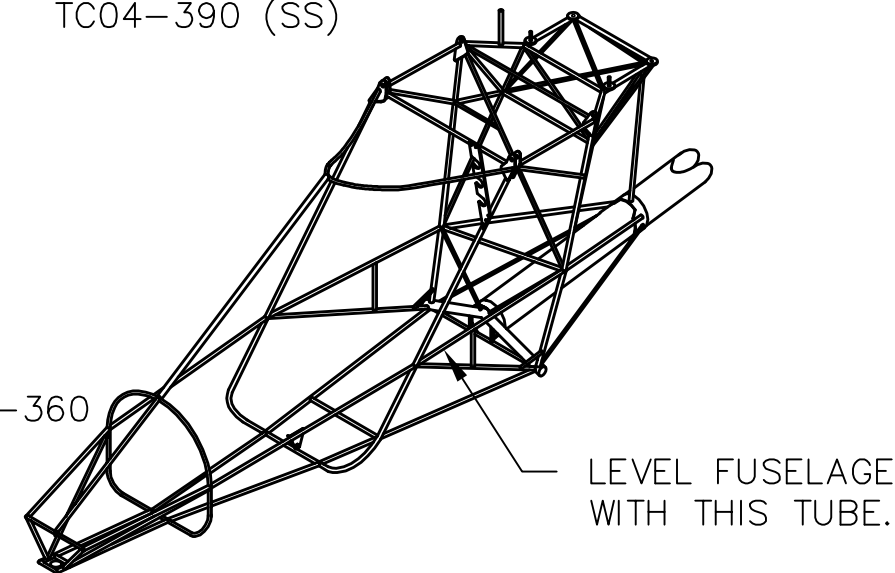
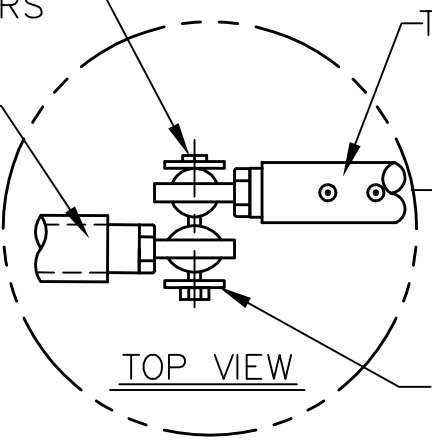


REVISIONS				
E.C. NO.	REV.	DESCRIPTION	BY	DATE
	A	DRAWING RELEASED	CE	10/05

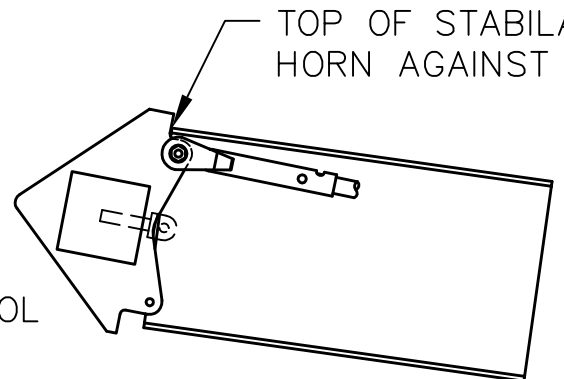


- NOTES:
- TO SET PUSH/PULL SYSTEM IN NEUTRAL POSITION, FIRST LEVEL FUSELAGE WITH INDICATED TUBE. NEXT LEVEL THE STABILATOR. FINALLY, ADJUST BALL JOINTS UNTIL THE CONTROL STICK REACHES THE DESIRED NEUTRAL POSITION.
 - PUSH STICK COMPLETELY FORWARD AND CHECK FOR FULL DEFLECTION.
 - PULL STICK COMPLETELY BACK AND CHECK FOR FULL DEFLECTION.



BOTTOM OF STABILATOR CONTROL HORN AGAINST TAIL BOOM

FULL DEFLECTION WITH STICK PUSHED FORWARD



TOP OF STABILATOR CONTROL HORN AGAINST TAIL BOOM

FULL DEFLECTION WITH STICK PULLED BACK

TITAN AIRCRAFT SUPPLY
 1419 STATE ROUTE 45 SOUTH
 AUSTINBURG, OHIO 44010

DETAIL NAME		SETTING HORIZONTAL PUSH/PULL	
SCALE	N/A	PART NO.	
ASSEMBLY NAME		TORNADO SS	
PART NO.		DRAWING NO.	
DRAWING NO.		B 05-INS-1434-A	

DRAWN	C. EMERY	DATE	10/4/05
CHECKED	G. TRUEX	DATE	10/4/05
APPROVED	J. WILLIAMS	DATE	10/5/05

THIS DOCUMENT PROPRIETARY TO TITAN AIRCRAFT, AND IS NOT TO BE USED, CIRCULATED, REPRODUCED, COPIED, OR DISCLOSED IN ANY MANNER WITHOUT PRIOR WRITTEN PERMISSION OF AN AUTHORIZED OFFICIAL OF TITAN AIRCRAFT.