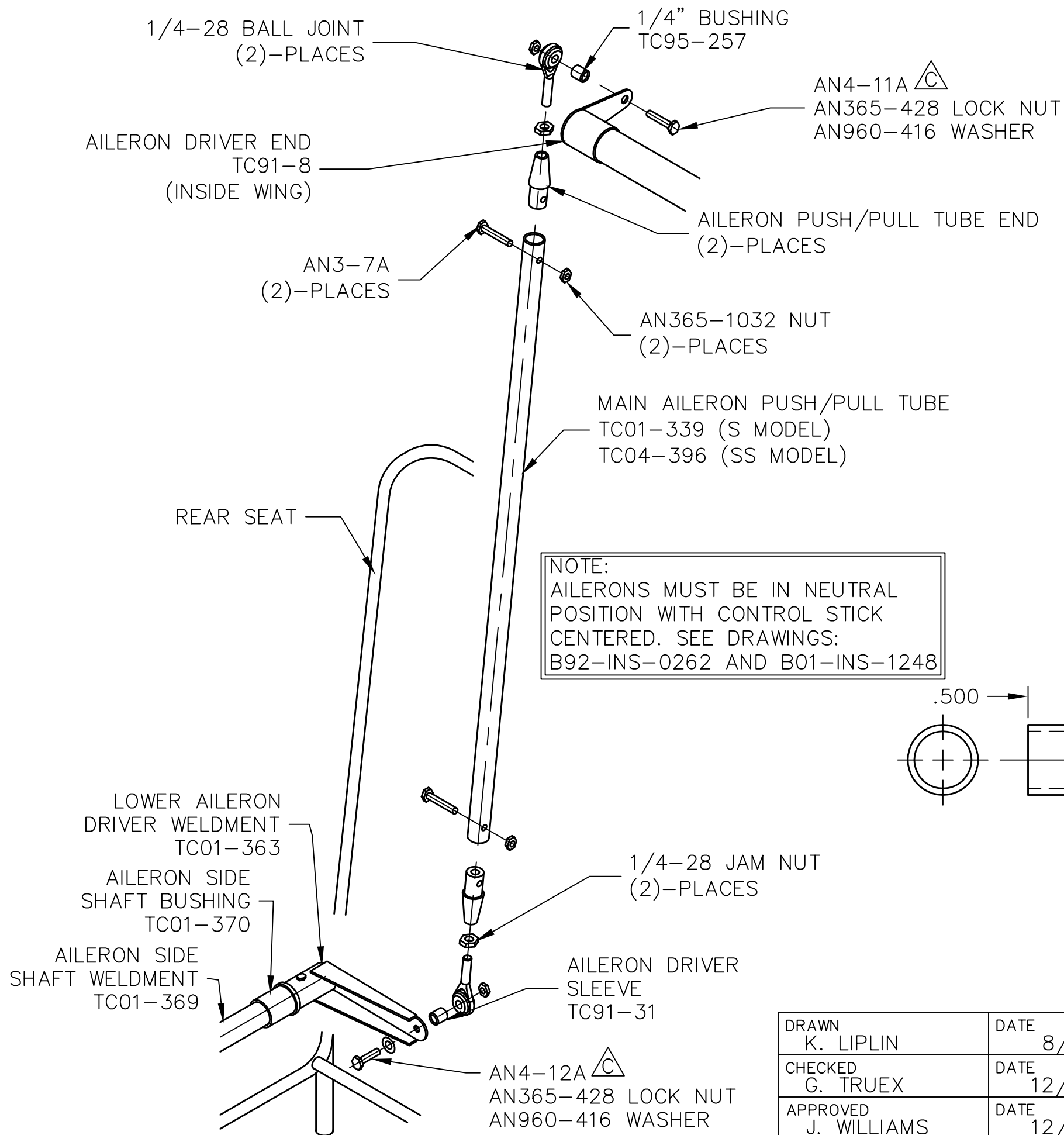
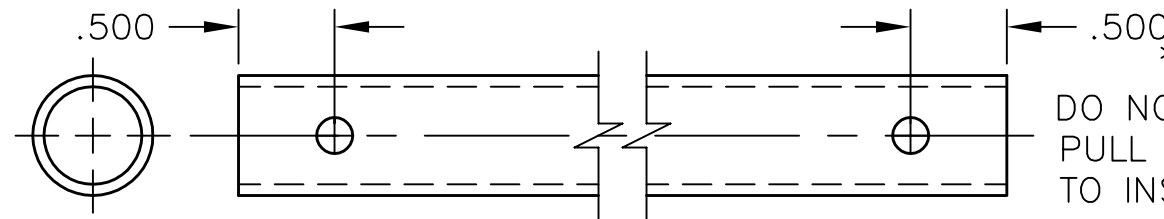


THIS DOCUMENT PROPRIETARY TO TITAN AIRCRAFT, AND IS NOT TO BE USED, CIRCULATED, REPRODUCED, COPIED, OR DISCLOSED IN ANY MANNER WITHOUT PRIOR WRITTEN PERMISSION OF AN AUTHORIZED OFFICIAL OF TITAN AIRCRAFT.



NOTE:
AILERONS MUST BE IN NEUTRAL POSITION WITH CONTROL STICK CENTERED. SEE DRAWINGS: B92-INS-0262 AND B01-INS-1248



HOLE DETAIL FOR MAIN AILERON PUSH/PULL TUBE

NOTE
DO NOT DRILL PUSH/PULL TUBE UNTIL FIT TO INSURE CLEARANCE

REVISIONS

E.C. NO.	REV.	DESCRIPTION	BY	DATE
	A	DRAWING RELEASED	KL	8/02
2180	B	ADDED PART NUMBER	CE	12/05
2184	C	CORRECTED BOLT SIZES	CE	12/05

NOTES:

- ALL DIMENSIONS ARE INCHES.
- WING SHOULD BE COMPLETELY ASSEMBLED.
- MOUNT WING TO FUSELAGE.
- STICK CONTROLS SHOULD BE COMPLETELY ASSEMBLED.
- INSERT AILERON PUSH/PULL TUBE ENDS INTO MAIN AILERON PUSH/PULL TUBE
- PRE-FIT MAIN AILERON PUSH/PULL TUBE INTO POSITION. IF NECESSARY, TRIM PUSH/PULL TUBE TO GAIN CLEARANCE.
- DRILL ONE 3/16 DIA HOLE THRU EACH END OF THE MAIN AILERON PUSH/PULL AS SHOWN BELOW.
- INSERT AILERON PUSH/PULL TUBE ENDS INTO MAIN AILERON PUSH/PULL TUBE AGAIN FOR FINAL ASSEMBLY.
- DRILL 3/16 DIA. HOLE THRU THE MAIN AILERON PUSH/PULL TUBE AND AILERON PUSH/PULL TUBE END.
- BOLT AILERON PUSH/PULL TUBE ENDS TO MAIN AILERON PUSH/PULL TUBE.
- INSTALL JAM NUT AND BALL JOINT INTO EACH AILERON PUSH/PULL TUBE END.
- MOUNT LOWER END OF MAIN AILERON PUSH/PULL TUBE ASSEMBLY TO THE LOWER AILERON DRIVER WELDMENT TC01-363
- MOUNT UPPER END OF MAIN AILERON PUSH/PULL TUBE ASSEMBLY TO AILERON DRIVER END (TC91-8)


TITAN AIRCRAFT SUPPLY
 1419 STATE ROUTE 45 SOUTH
 AUSTINBURG, OHIO 44010

DETAIL NAME MAIN AILERON PUSH/PULL TUBE ASSEMBLY

DRAWN K. LIPLIN	DATE 8/27/02
CHECKED G. TRUEX	DATE 12/23/05
APPROVED J. WILLIAMS	DATE 12/23/05

SCALE 1/4=1	PART NO.
ASSEMBLY NAME S & SS MODELS	
PART NO.	DRAWING NO.
DRAWING NO. B 02-INS-1376-C	