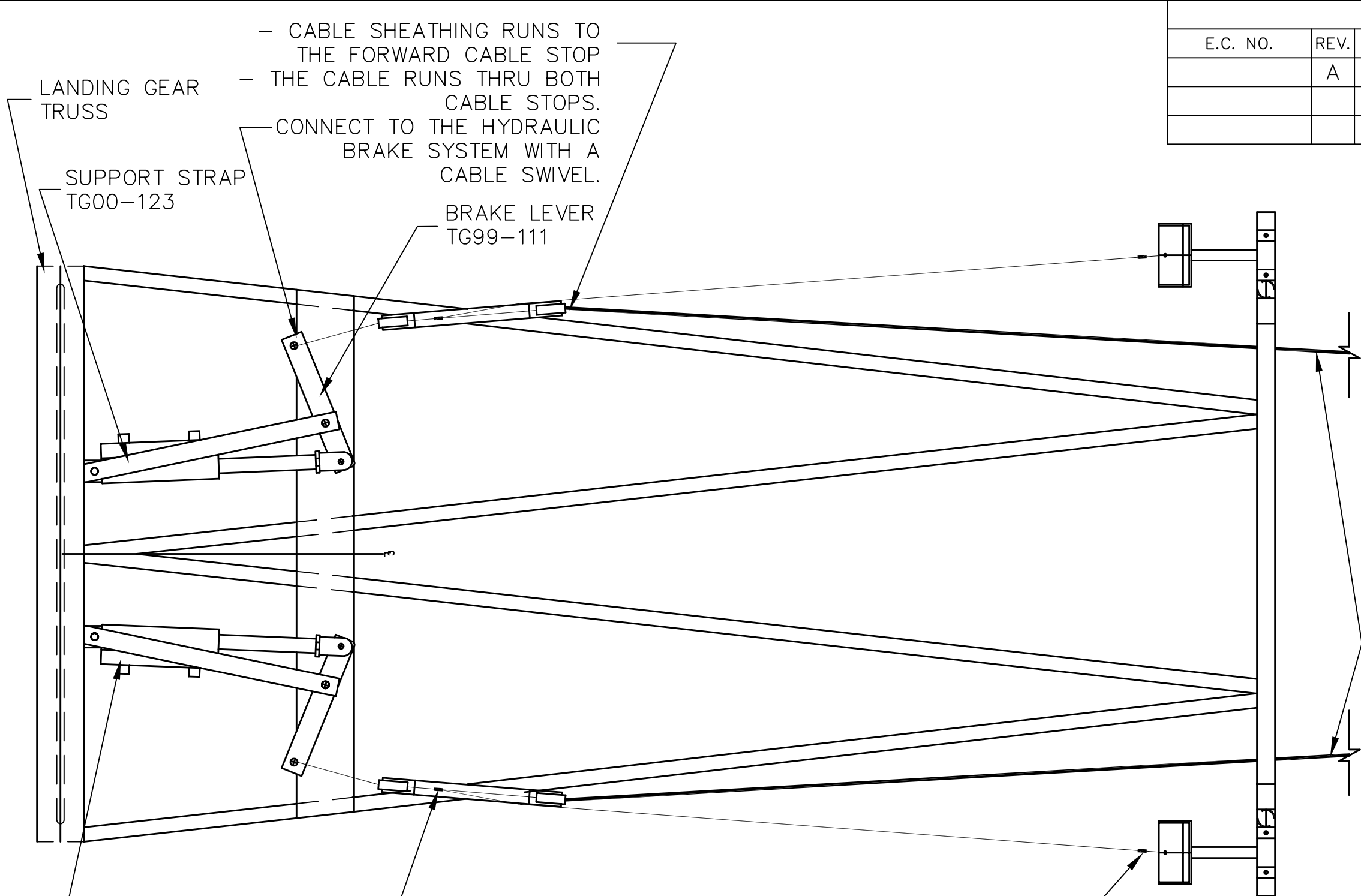


REVISIONS				
E.C. NO.	REV.	DESCRIPTION	BY	DATE
	A	DRAWING RELEASED	KL	6/01



- CABLE SHEATHING RUNS TO THE FORWARD CABLE STOP  
 - THE CABLE RUNS THRU BOTH CABLE STOPS.

LANDING GEAR TRUSS

SUPPORT STRAP TG00-123

CONNECT TO THE HYDRAULIC BRAKE SYSTEM WITH A CABLE SWIVEL.

BRAKE LEVER TG99-111

CABLES SHEATHING RUNS TO FRONT CABLE STOPS ON THE RUDDER PEDALS.

NICO CABLE TO REAR BRAKE PEDAL.

HYDRAULIC CYLINDER REFER TO DWG. NO. B01-INS-1159 FOR MORE DETAILS

NICO TO FRONT HYDRAULIC BRAKE CABLE BETWEEN THE TWO CABLE STOPS.

**TITAN AIRCRAFT SUPPLY**  
 1419 STATE ROUTE 45 SOUTH  
 AUSTINBURG, OHIO 44010

DETAIL NAME REAR HYDRAULIC BRAKE PEDAL ASSEMBLY  
 SCALE 1/4"=1" PART NO.  
 ASSEMBLY NAME ALL TORNADO FUSELAGE ASSEMBLYS  
 PART NO. DRAWING NO.  
 DRAWING NO. **B 01-INS-1255-A**

DRAWN K. LIPLIN	DATE 6/14/01
CHECKED G. TRUEX	DATE 10/25/01
APPROVED B. PASSAFIUME	DATE 10/25/01

THIS DOCUMENT PROPRIETARY TO TITAN AIRCRAFT, AND IS NOT TO BE USED, CIRCULATED, REPRODUCED, COPIED, OR DISCLOSED IN ANY MANNER WITHOUT PRIOR WRITTEN PERMISSION OF AN AUTHORIZED OFFICIAL OF TITAN AIRCRAFT.