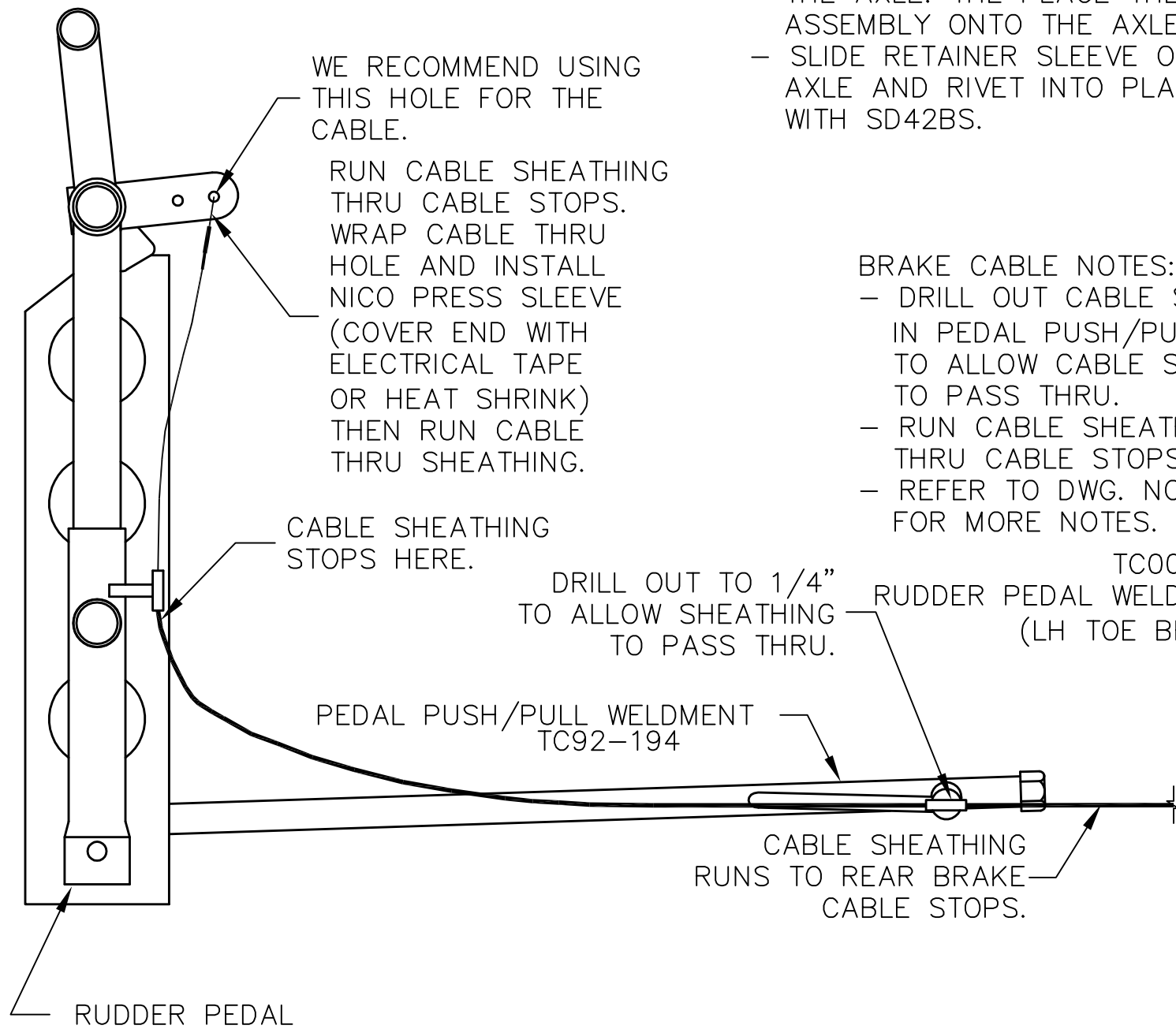


THIS DOCUMENT PROPRIETARY TO TITAN AIRCRAFT, AND IS NOT TO BE USED, CIRCULATED, REPRODUCED, COPIED, OR DISCLOSED IN ANY MANNER WITHOUT PRIOR WRITTEN PERMISSION OF AN AUTHORIZED OFFICIAL OF TITAN AIRCRAFT.



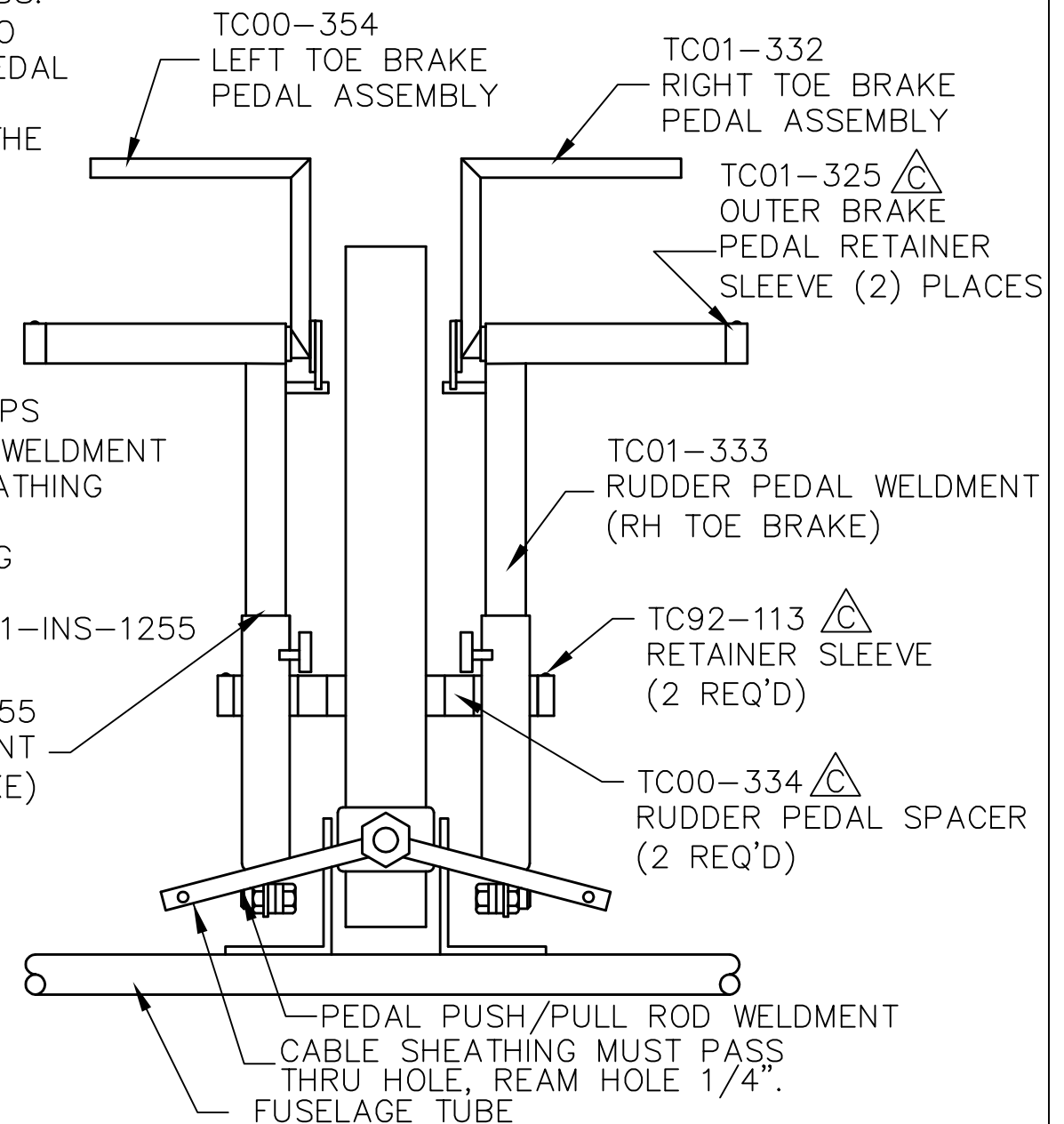
PEDAL ASSEMBLY NOTES:

- SLIDE TOE BRAKE PEDAL INTO RUDDER PEDAL.
- SLIDE RETAINER SLEEVE ONTO END OF TOE BRAKE, RIVET INTO PLACE WITH SD42BS.
- SLIDE THE 1/2" SPACER ONTO THE AXLE. THEN PLACE THE PEDAL ASSEMBLY ONTO THE AXLE.
- SLIDE RETAINER SLEEVE ON THE AXLE AND RIVET INTO PLACE WITH SD42BS.

BRAKE CABLE NOTES:

- DRILL OUT CABLE STOPS IN PEDAL PUSH/PULL WELDMENT TO ALLOW CABLE SHEATHING TO PASS THRU.
- RUN CABLE SHEATHING THRU CABLE STOPS.
- REFER TO DWG. NO. 01-INS-1255 FOR MORE NOTES.

REVISIONS				
E.C. NO.	REV.	DESCRIPTION	BY	DATE
2020	B	RIGHT & LEFT SIDES SWITCHED	KL	10/01
2181	C	CORRECT AND ADDED PART NUMBERS	CE	12/05




TITAN AIRCRAFT SUPPLY
 1419 STATE ROUTE 45 SOUTH
 AUSTINBURG, OHIO 44010

DETAIL NAME		HYDRAULIC BRAKE PEDAL ASSEMBLY	
SCALE	N/A	PART NO.	
ASSEMBLY NAME		TORNADO S	
PART NO.		DRAWING NO.	
DRAWING NO.		B 01-INS-1244-C	

DRAWN	K. LIPLIN	DATE	6/12/01
CHECKED	G. TRUEX	DATE	12/22/05
APPROVED	J. WILLIAMS	DATE	12/22/05