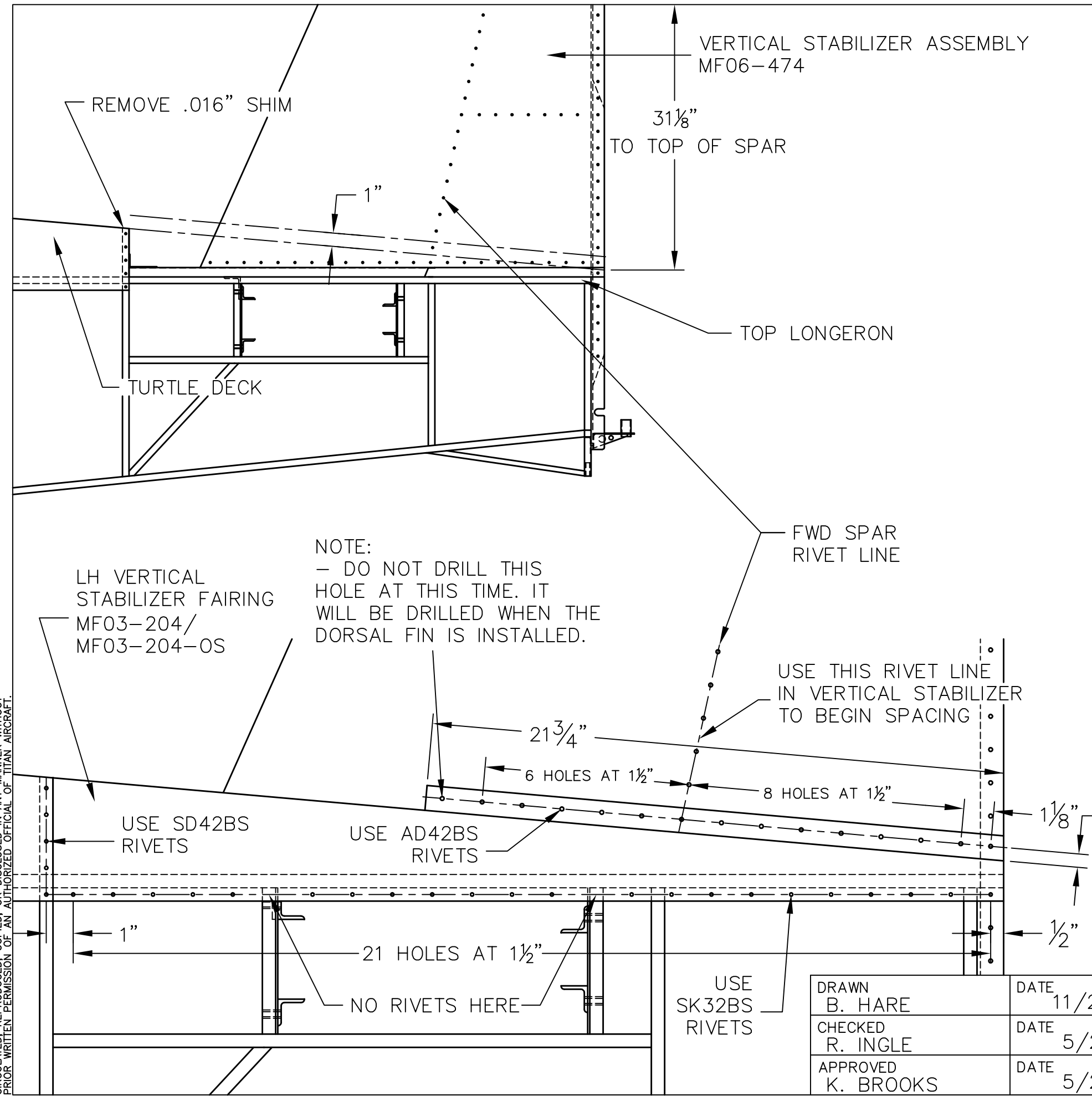


THIS DOCUMENT PROPRIETARY TO TITAN AIRCRAFT, AND IS NOT TO BE USED, CIRCULATED, REPRODUCED, COPIED, OR DISCLOSED IN ANY MANNER WITHOUT PRIOR WRITTEN PERMISSION OF AN AUTHORIZED OFFICIAL OF TITAN AIRCRAFT.



REVISIONS				
E.C. NO.	REV.	DESCRIPTION	BY	DATE
	A	DRAWING RELEASED	BH	11/09
1053	B	CORRECTED NOTES	BH	4/10

NOTES:

- FROM THE TOP OF THE VERTICAL SPAR, MEASURE DOWN 31 1/8".
- TAKE A STRAIGHT EDGE FROM THE TOP OF THE TURTLE DECK TO THE 31 1/8" MEASUREMENT AND DRAW A LINE.
- MEASURE UP 1" FROM THIS LINE AND DRAW ANOTHER ONE PARALLEL TO IT.
- REMOVE THE .016" TEMPORARY SHIM FROM BULKHEAD U12 USED TO SIMULATE MF03-200/MF03-200-OS AND MF03-204/MF03-204-OS.
- TAKE THE LH FAIRING (MF03-204/MF03-204-OS) AND SLIDE IT UNDER THE TURTLE DECK, ALIGNING THE BOTTOM OF IT WITH THE BOTTOM OF THE TOP LONGERON HAT SECTION, CLAMP INTO PLACE. DO THE SAME PROCEDURE FOR THE RH FAIRING (MF03-200/MF03-200-OS).
- MATCH DRILL THE HOLES IN THE TURTLE DECK FROM THE OUTSIDE AND THE HOLES IN THE TOP LONGERON FROM THE INSIDE ON BOTH FAIRINGS.
- CLECO FAIRINGS INTO PLACE.
- BEND THE FAIRING FLANGES TO THE LINES DRAWN ON THE VERTICAL STABILIZER, CLAMP IN PLACE.
- FROM THE BOTTOM BEND LINE MEASURE UP 1/2" AND DRAW A LINE FOR THE RIVET CENTERLINE.
- AT THE RIVET CENTERLINE IN THE VERTICAL STABILIZER, START DRILLING RIVET HOLES WITH THE DIMENSIONS GIVEN, CLECO AS YOU GO.
- WHEN RIVETING THE FAIRINGS, USE SD42BS RIVETS AT THE U12 BULKHEAD GOING DOWN THE TURTLE DECK. USE SK32BS RIVETS ALONG THE TOP LONGERON HAT SECTION. USE AD42BS RIVETS ON THE VERTICAL STABILIZER.

TITAN AIRCRAFT SUPPLY
 1419 STATE ROUTE 45 SOUTH
 AUSTINBURG, OHIO 44010

DRAWN B. HARE		DATE 11/20/09	DETAIL NAME VERTICAL STABILIZER FAIRING INSTALLATION	
CHECKED R. INGLE		DATE 5/20/10	SCALE N/A	PART NO.
APPROVED K. BROOKS		DATE 5/20/10	ASSEMBLY NAME	
			PART NO.	DRAWING NO. S16
			DRAWING NO. B T51-09-INS-1872-B	