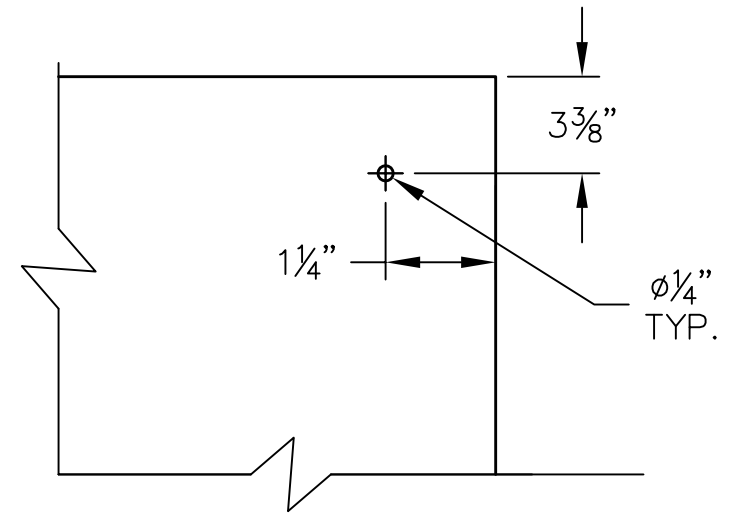


REVISIONS

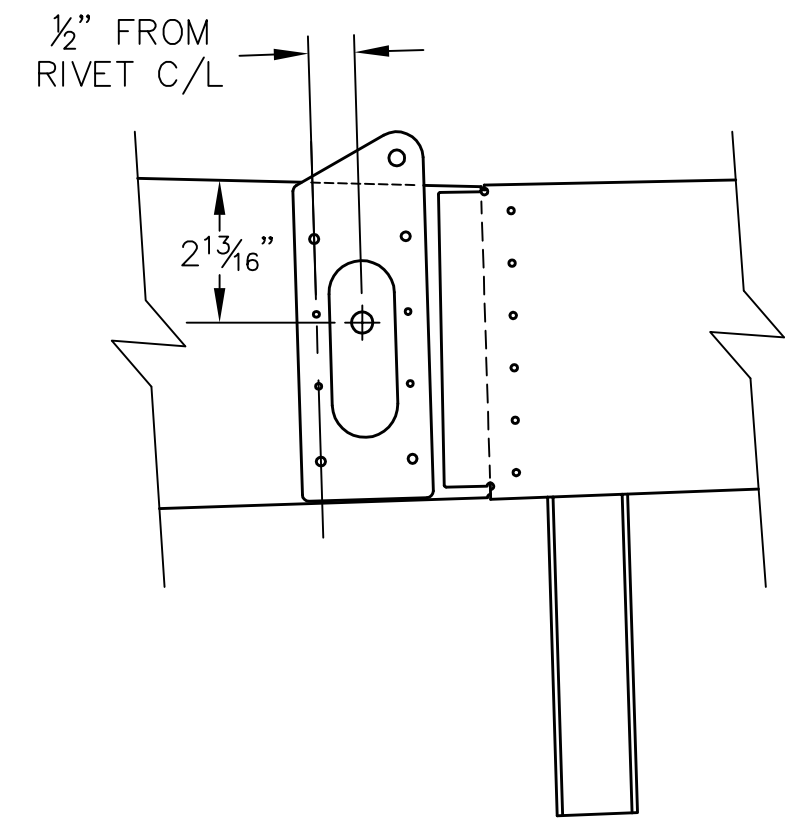
E.C. NO.	REV.	DESCRIPTION	BY	DATE
	A	DRAWING RELEASED	SH	5/09

NOTES:

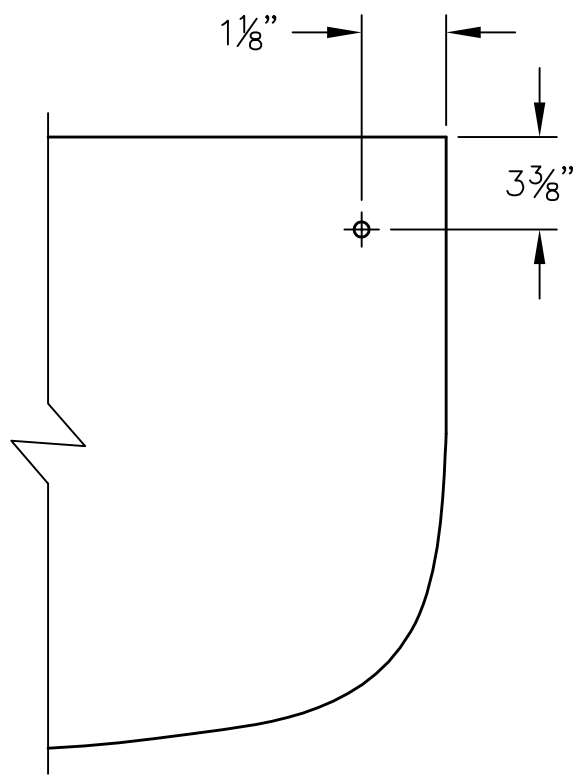
- MARK OUT EACH LOCATION AND USE A  $\phi 1/4$ " DRILL. EACH HOLE SHOULD HAVE A PIECE OF CABLE SHEATHING INSERTED THRU HOLE TO PROTECT RUDDER CABLES FROM ALUMINUM.



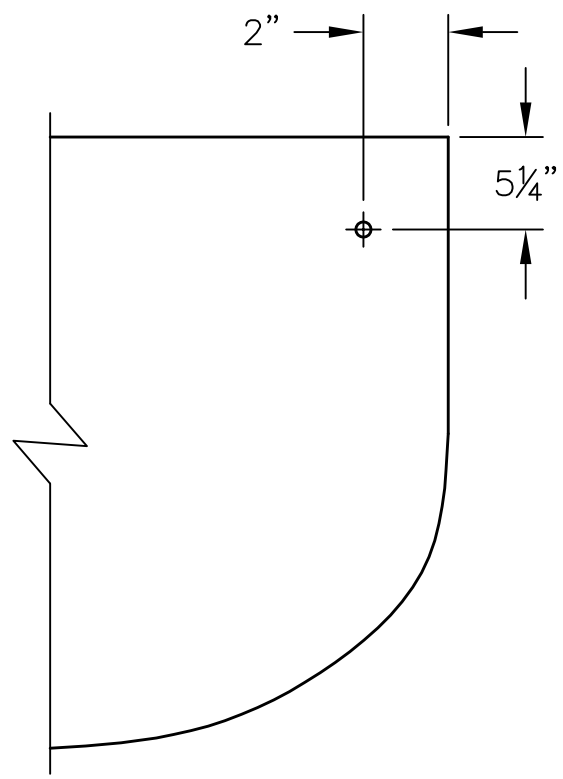
AFT FOOTWELL



CENTER SECTION AFT SPAR



BULKHEAD L8



BULKHEAD L9

THIS DOCUMENT PROPRIETARY TO TITAN AIRCRAFT, AND IS NOT TO BE USED, CIRCULATED, REPRODUCED, COPIED, OR DISCLOSED IN ANY MANNER WITHOUT PRIOR WRITTEN PERMISSION OF AN AUTHORIZED OFFICIAL OF TITAN AIRCRAFT.

**TITAN AIRCRAFT SUPPLY**  
 1419 STATE ROUTE 45 SOUTH  
 AUSTINBURG, OHIO 44010

DETAIL NAME AFT RUDDER PEDAL CABLE ROUTING INSTRUCTIONS

DRAWN S. HENDERSON	DATE 5/12/09
CHECKED RI	DATE 6/26/09
APPROVED KORY B.	DATE 7/7/09

SCALE 3/16"=1"	PART NO.
ASSEMBLY NAME	
PART NO.	DRAWING NO. CR3.5
DRAWING NO. <b>B T51-09-INS-1827-A</b>	