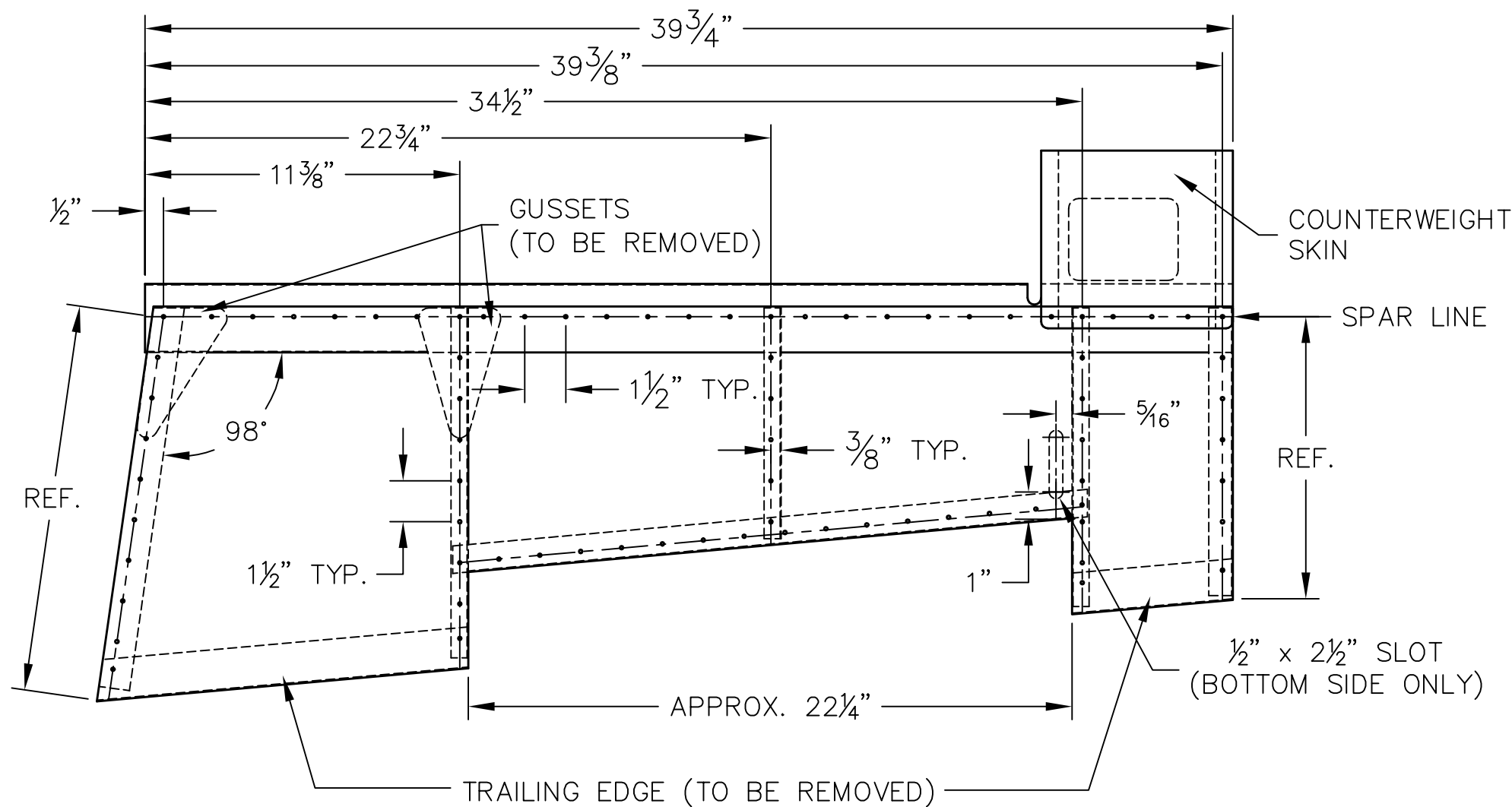


REVISIONS				
E.C. NO.	REV.	DESCRIPTION	BY	DATE
	A	DRAWING RELEASED	SH	4/09
1114	B	ADDED NOTE	BH	1/11

NOTES:

- MEASURE FROM THE SPAR LINE TO THE TRAILING EDGE ON THE INBOARD AND OUTBOARD RIBS. USE THESE DIMENSIONS AS GUIDELINES FOR FITTING AND INSTALLING THE ALUMINUM SKIN (MT06-197).
- REMOVE RIVETS FROM THE TRAILING EDGE OF COUNTERWEIGHT SKIN. ELEVATOR SKINS NEED TO BE OVERLAPPED BY THE COUNTERWEIGHT SKIN.
- REMOVE THE TRAILING EDGE(S) AND THE GUSSETS FROM THE ELEVATOR ASSEMBLIES.
- POSITION THE ELEVATOR SKINS AND LAYOUT RIVET PATTERN ON SKINS, DRILL SKINS AND CLECO IN PLACE.
- DURING FINAL ASSEMBLY BOND AND RIVET SKINS IN PLACE WITH AD42ABS RIVETS AND SD42BS RIVETS ON THE TOP AND BOTTOM SPAR LINES.



RH SHOWN, (LH OPPOSITE
WITHOUT TRIM TAB)

TITAN AIRCRAFT SUPPLY
 1419 STATE ROUTE 45 SOUTH
 AUSTINBURG, OHIO 44010

DETAIL NAME ELEVATOR ALUMINUM SKIN INSTALLATION

DRAWN S. HENDERSON	DATE 4/8/09
CHECKED K. BROOKS	DATE 7/11/11
APPROVED B. KOLENO	DATE 7/19/11

SCALE 3/16"=1"	PART NO.
ASSEMBLY NAME	
PART NO.	DRAWING NO. 04
DRAWING NO. B T51-09-INS-1821-B	

THIS DOCUMENT PROPRIETARY TO TITAN AIRCRAFT, AND IS NOT TO BE USED, CIRCULATED, REPRODUCED, COPIED, OR DISCLOSED IN ANY MANNER WITHOUT PRIOR WRITTEN PERMISSION OF AN AUTHORIZED OFFICIAL OF TITAN AIRCRAFT.