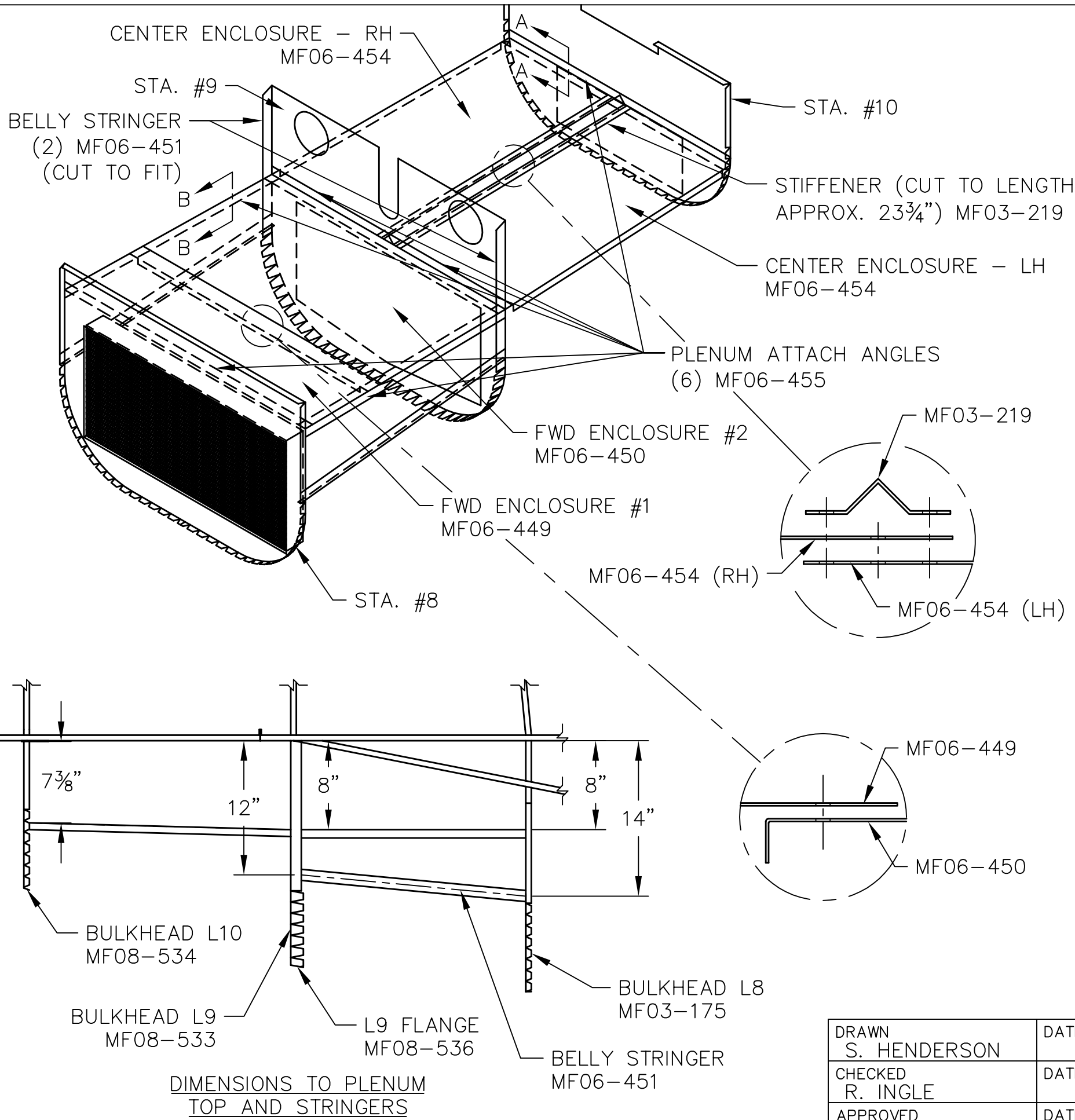


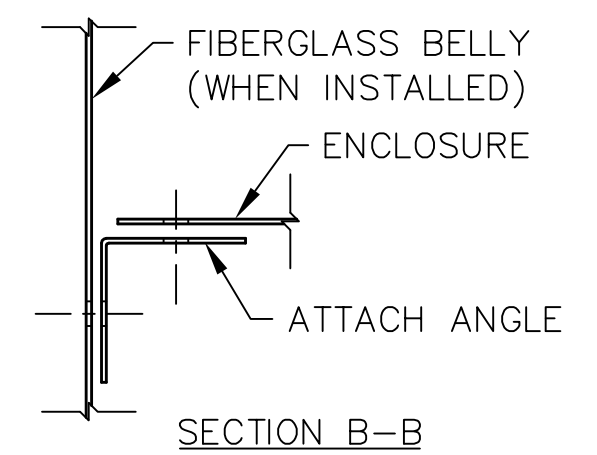
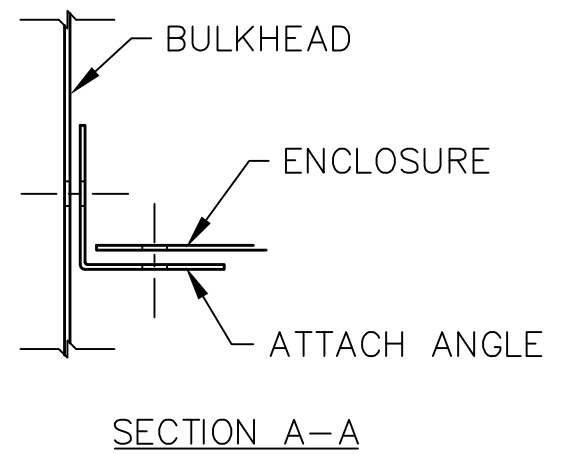
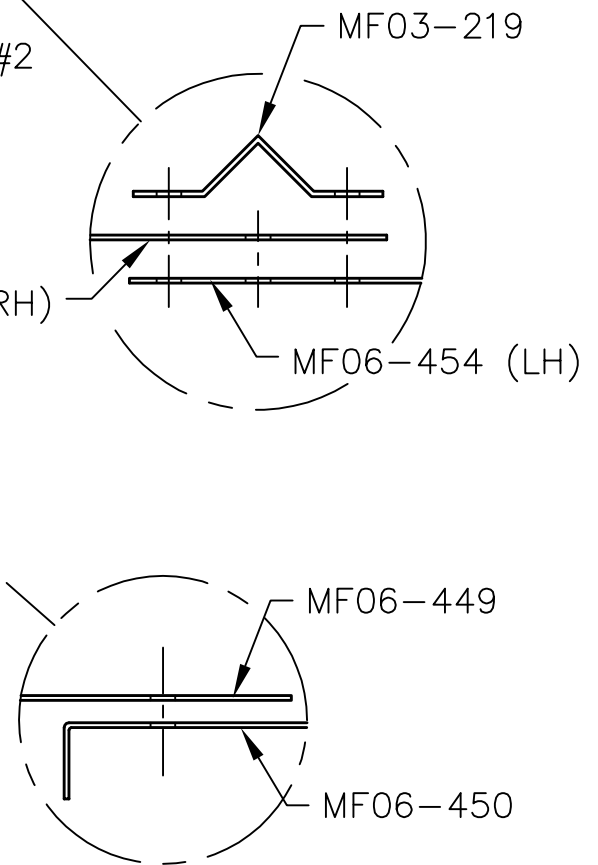
THIS DOCUMENT PROPRIETARY TO TITAN AIRCRAFT, AND IS NOT TO BE USED, CIRCULATED, REPRODUCED, COPIED, OR DISCLOSED IN ANY MANNER WITHOUT PRIOR WRITTEN PERMISSION OF AN AUTHORIZED OFFICIAL OF TITAN AIRCRAFT.



REVISIONS				
E.C. NO.	REV.	DESCRIPTION	BY	DATE
	A	DRAWING RELEASED	SH	2/09
1058	B	CHANGED DIMENSIONS	BH	5/10

**NOTES:**

- DIMENSIONS FOR THE PLENUM TOP ARE TAKEN FROM THE BOTTOM OF THE LONGERON TUBE TO THE TOP OF EACH ENCLOSURE. (FIT RADIATOR PRIOR TO FWD ENCLOSURE INSTALLATION TO ENSURE PLENUM DOES NOT INTERFERE WITH RADIATOR.)
- DIMENSIONS FOR THE STRINGERS ARE TAKEN FROM THE BOTTOM OF THE LONGERON TUBES TO THE CENTERLINE OF EACH STRINGER.
- CUT (2) MF06-451 STRINGERS AS SIDE FLANGES FOR L9.
- USE (4) MF06-455 ANGLES ON THE FWD ENCLOSURE; ONE ON EACH SIDE, ONE ON THE FWD, AND ONE ON THE AFT.
- USE (2) MF06-455 ANGLES ON THE CENTER ENCLOSURE; ONE ON THE FWD SIDE AND ONE ON THE AFT.
- ATTACH ANGLES TO BULKHEADS AT GIVEN DIMENSIONS AND POSITION THE ENCLOSURES IN PLACE. MARK RIVET LAYOUT ON ENCLOSURES BEFORE ATTACHING TO ANGLES.
- USE AK42BS RIVETS ON THE ANGLES AND ENCLOSURES, USE URALANE AND MS20426A3-3 RIVETS ON THE STRINGERS.



**TITAN AIRCRAFT SUPPLY**  
 1419 STATE ROUTE 45 SOUTH  
 AUSTINBURG, OHIO 44010

DETAIL NAME	TOP PLENUM AND STRINGER INSTALLATION		
SCALE	N/A	PART NO.	
ASSEMBLY NAME	FOR FIBERGLASS BELLY		
PART NO.		DRAWING NO.	F39.1
DRAWING NO.	B T51-09-INS-1809-B		

DRAWN S. HENDERSON	DATE 2/9/09
CHECKED R. INGLE	DATE 5/27/10
APPROVED K. BROOKS	DATE 6/1/10