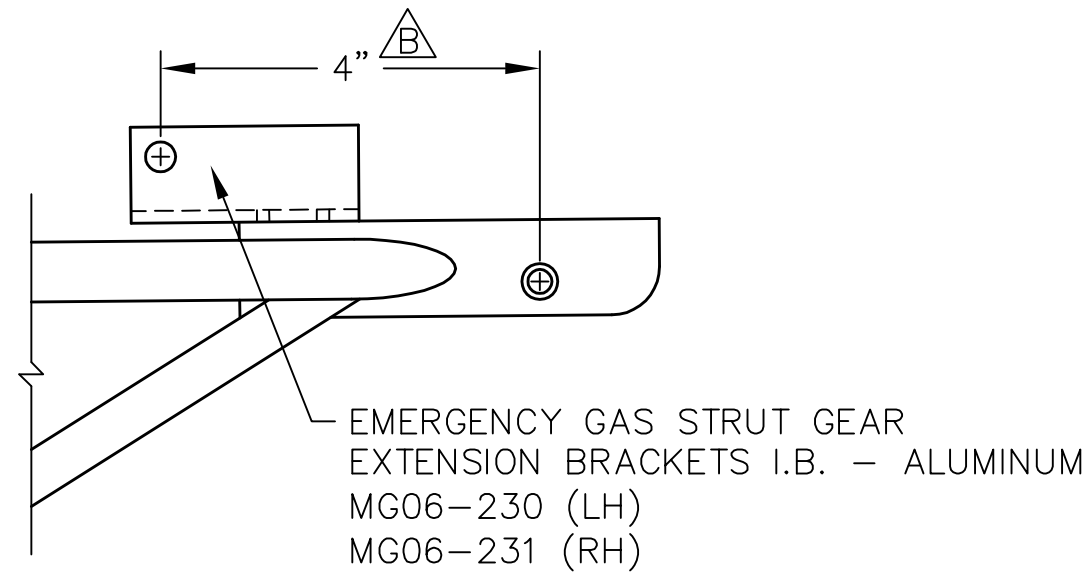


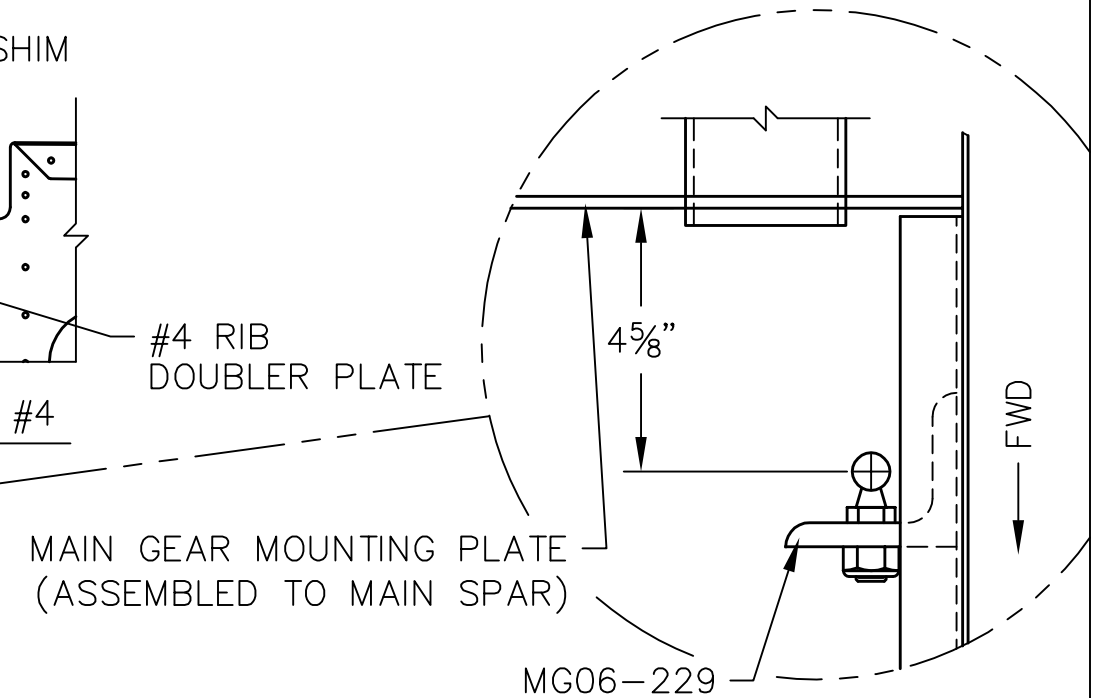
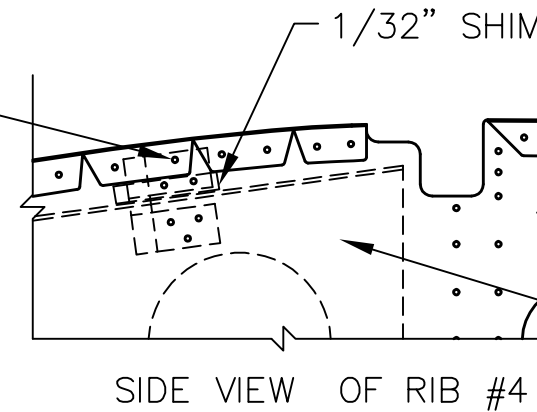
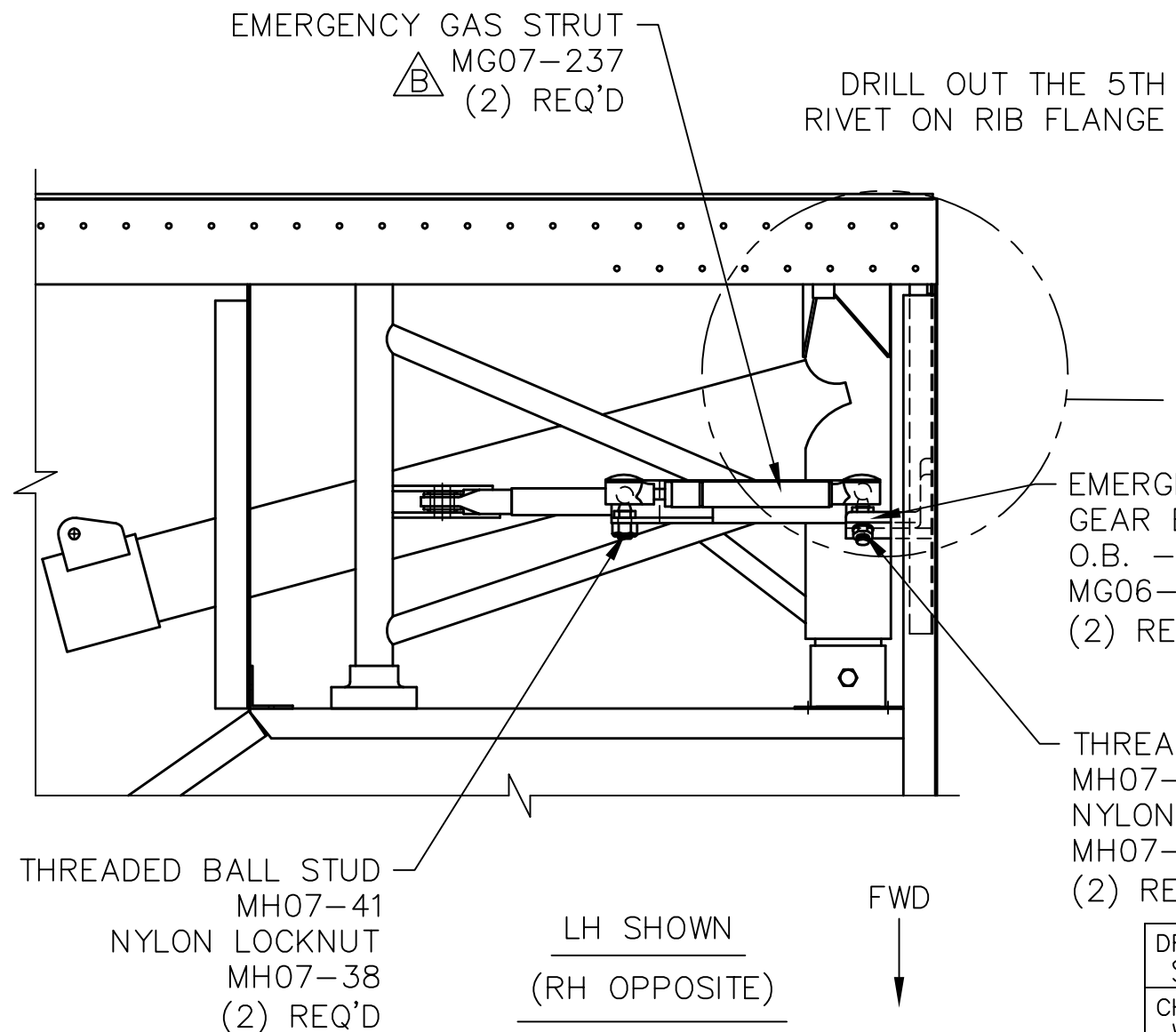
REVISIONS

E.C. NO.	REV.	DESCRIPTION	BY	DATE
	A	DRAWING RELEASED	SH	12/07
0594	B	DIM. ADDED & CORRECTED STRUT	SH	1/08
0823	C	VIEW ADDED	SH	12/08



NOTES:

- ATTACH ONE THREADED BALL STUD TO EACH EXTENSION BRACKET W/ REQUIRED NUTS.
- A 1/32" THICK SHIM IS NEEDED FOR THE LOWER LEGS ON MG06-229, WHICH CAN BE MADE FROM SCRAP MATERIAL.
- THE DIMENSION SHOWN IS FROM THE MAIN GEAR MOUNTING PLATE (ASSEMBLED TO THE MAIN SPAR) AND GOES TO THE CENTER OF THE BALL STUD WHEN ATTACHED TO MG06-229. THE TOP LEG OF MG06-229 WILL NEED TO SIT FLUSH AGAINST THE EXISTING FLANGE'S AT THE TOP OF RIB #4 WHEN POSITIONING.
- SAND ALL BONDING SURFACES WITH 80 GRIT SAND PAPER, THEN BOND AND RIVET IN PLACE USING (6) SD46BS RIVETS. ATTACH THE GAS STRUTS (MG07-237) TO THE BALL STUDS ONCE THE BRACKETS ARE IN PLACE AND SECURE



TITAN AIRCRAFT SUPPLY
1419 STATE ROUTE 45 SOUTH
AUSTINBURG, OHIO 44010

DETAIL NAME	GAS STRUT EXTENSION INSTALLATION		
SCALE	N/A	PART NO.	
ASSEMBLY NAME			
PART NO.	DRAWING NO.		
DRAWING NO.	B T51-07-INS-1684-C		

DRAWN S. HENDERSON	DATE 12/3/07
CHECKED WTK	DATE 12/9/08
APPROVED KORY B.	DATE 12/10/08

THIS DOCUMENT PROPRIETARY TO TITAN AIRCRAFT, AND IS NOT TO BE USED, CIRCULATED, REPRODUCED, COPIED, OR DISCLOSED IN ANY MANNER WITHOUT PRIOR WRITTEN PERMISSION OF AN AUTHORIZED OFFICIAL OF TITAN AIRCRAFT.