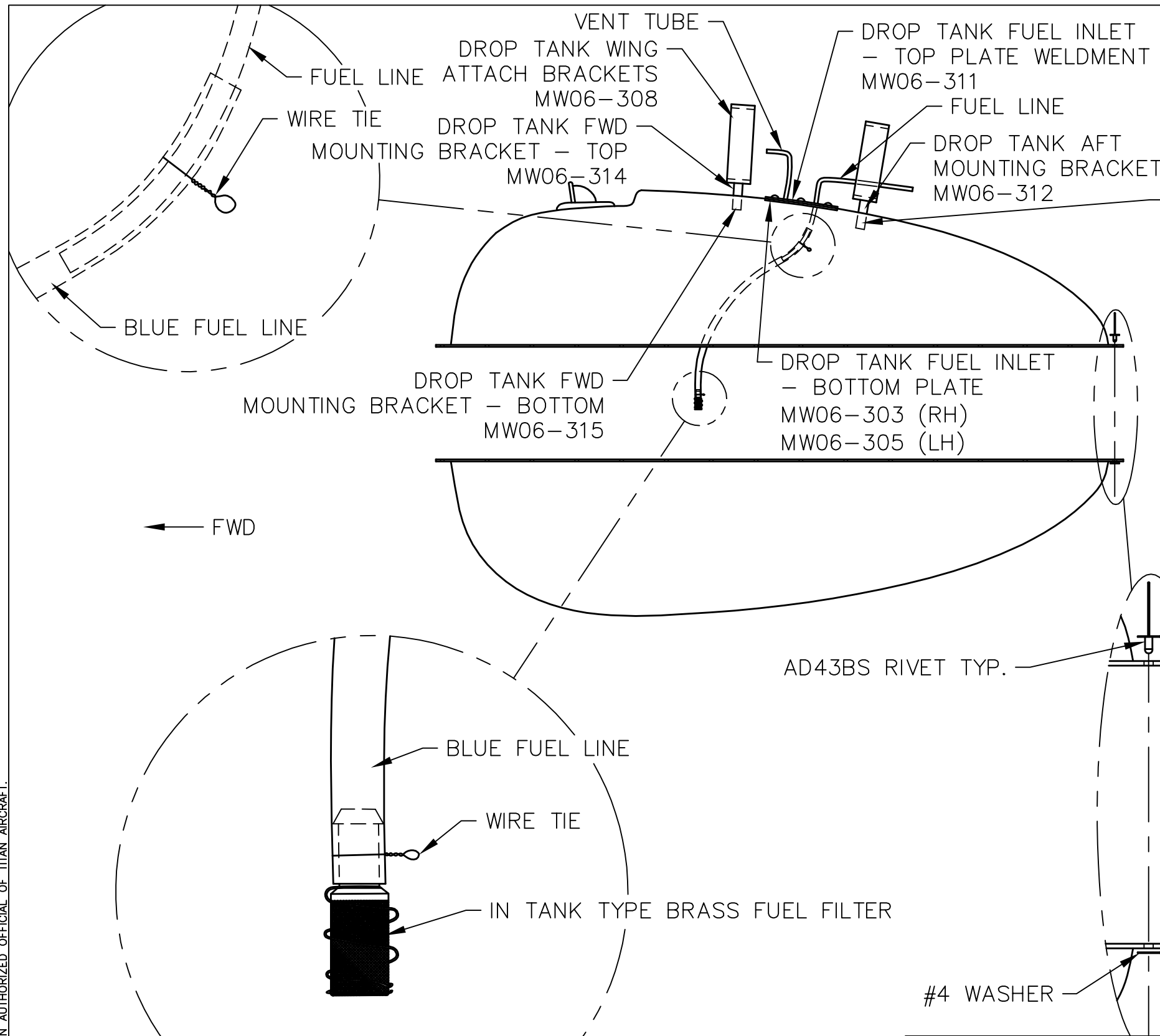
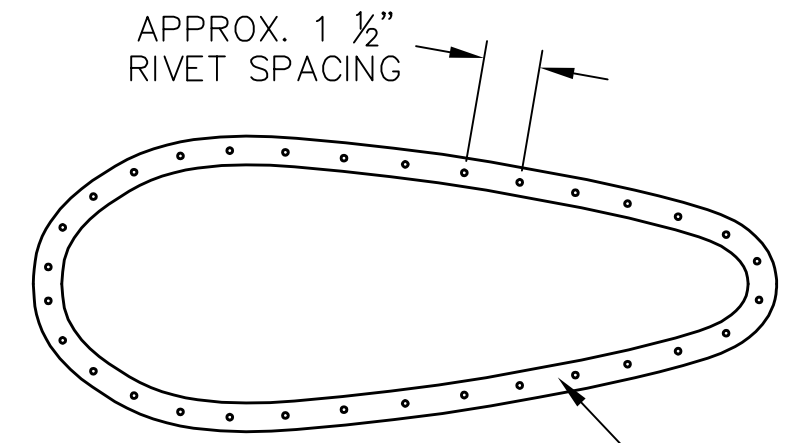


THIS DOCUMENT PROPRIETARY TO TITAN AIRCRAFT, AND IS NOT TO BE USED, CIRCULATED, REPRODUCED, COPIED, OR DISCLOSED IN ANY MANNER WITHOUT PRIOR WRITTEN PERMISSION OF AN AUTHORIZED OFFICIAL OF TITAN AIRCRAFT.

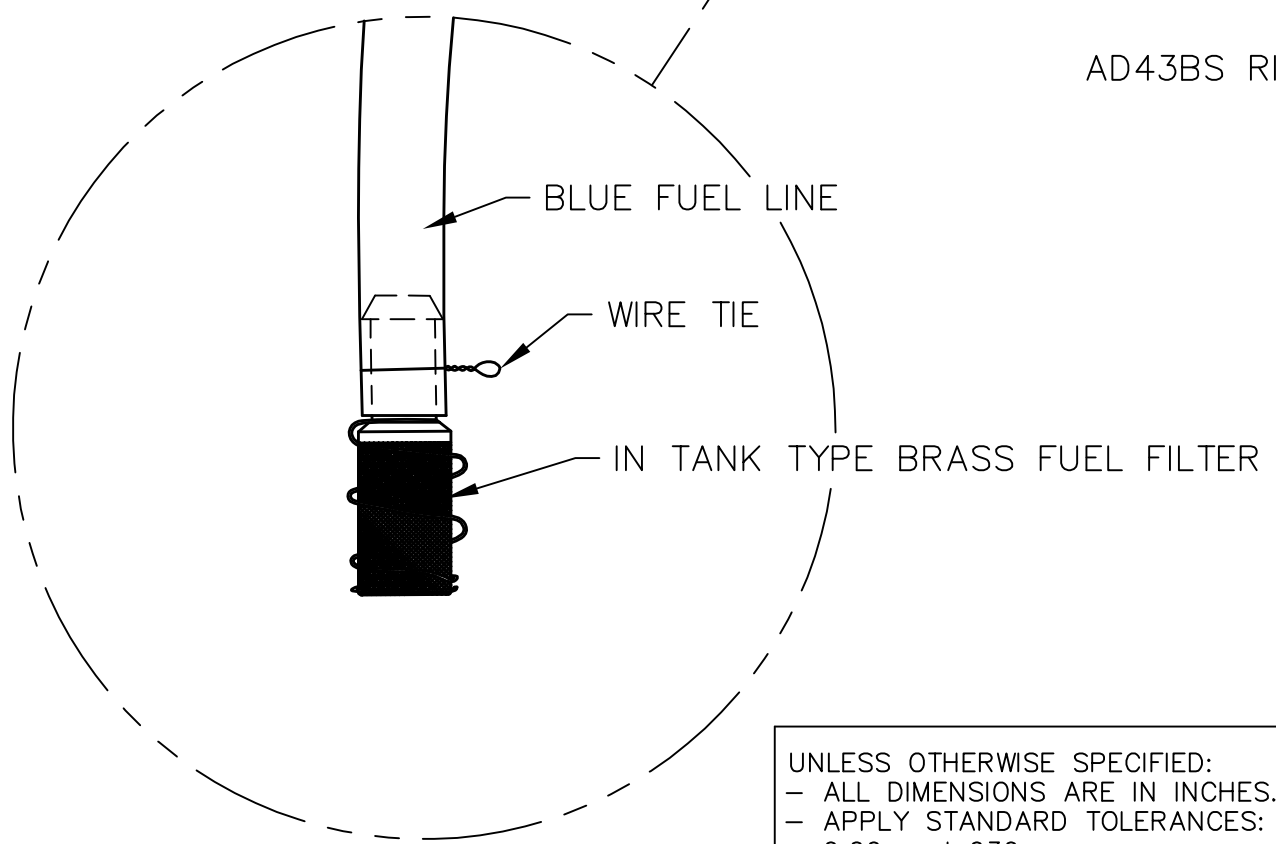


REVISIONS				
E.C. NO.	REV.	DESCRIPTION	BY	DATE
	A	RELEASED DRAWING	SH	9/07

NOTES:
 - CLAMP BOTH HALVES OF THE FUEL TANKS TOGETHER AND MATCH DRILL #30 HOLES, SPACE THE HOLES APPROX. 1 1/2" APART IN THE CENTER OF THE FLANGE.
 - BE SURE ALL HARDWARE SHOWN IS INSTALLED BEFORE ATTACHING THE HALVES PERMANENTLY, USE EPOXY RESIN, AD43BS RIVETS, AND #4 WASHERS WHEN ATTACHING THE HALVES. (THE EPOXY RESIN ACTS AS A GASKET BETWEEN THE HALVES, WHEN THEY ARE ASSEMBLED.)



USE A GENEROUS AMOUNT OF EPOXY RESIN ON THIS FLANGE BEFORE ATTACHING HALVES TOGETHER



MATERIAL	
DRAWN S. HENDERSON	DATE 9/24/07
CHECKED	DATE
APPROVED	DATE

UNLESS OTHERWISE SPECIFIED:
 - ALL DIMENSIONS ARE IN INCHES.
 - APPLY STANDARD TOLERANCES:
 0.00 = ±.030
 0.000 = ±.010
 ANGULAR ±1°
 - BREAK ALL SHARP CORNERS

TITAN AIRCRAFT SUPPLY
 1419 STATE ROUTE 45 SOUTH
 AUSTINBURG, OHIO 44010

DETAIL NAME EXTERNAL FUEL TANK ASSEMBLY INSTRUCTIONS

SCALE N/A	PART NO.
ASSEMBLY NAME	
PART NO.	DRAWING NO.
DRAWING NO. B T51-07-INS-1658-A	