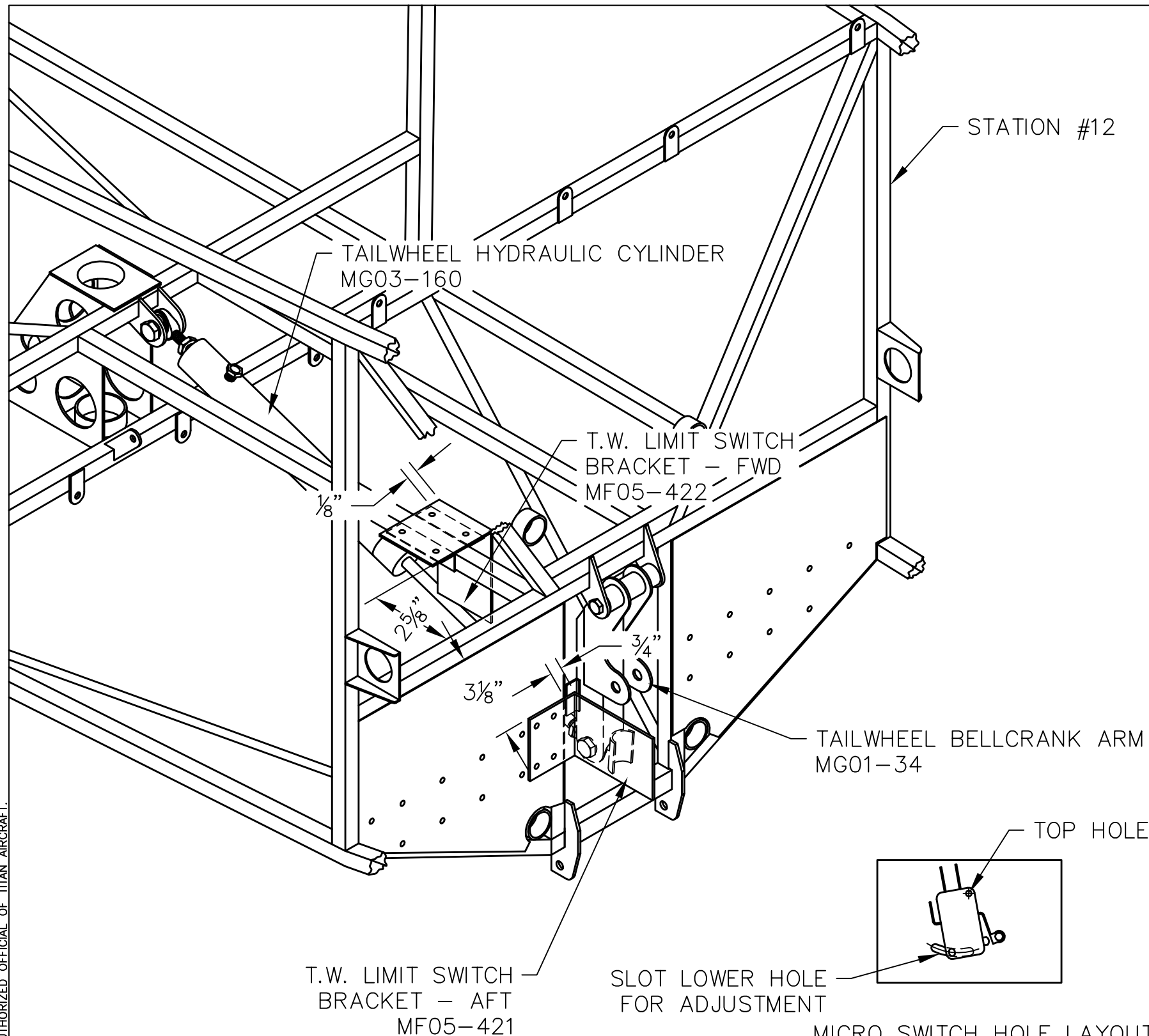


THIS DOCUMENT PROPRIETARY TO TITAN AIRCRAFT, AND IS NOT TO BE USED, CIRCULATED, REPRODUCED, COPIED, OR DISCLOSED IN ANY MANNER WITHOUT PRIOR WRITTEN PERMISSION OF AN AUTHORIZED OFFICIAL OF TITAN AIRCRAFT.




REVISIONS				
E.C. NO.	REV.	DESCRIPTION	BY	DATE
	A	DRAWING RELEASED	SH	7/07

NOTES:

- BEFORE ATTACHING THE TAILWHEEL LIMIT SWITCHES BE SURE THE TAILWHEEL ENCLOSURE IS ASSEMBLED, REFER TO DRAWING T51-06-INS-1407 FOR DETAILS.
- ATTACH THE TAILWHEEL HYDRAULIC CYLINDER (MG03-160) & THE TAILWHEEL BELLCRANK ARM (MG01-34) IN PLACE. REFER TO DRAWINGS T51-03-INS-0816 & T51-04-INS-1002.
- THE FWD MOUNTING BRACKET (MF05-422) SHOULD BE POSITIONED APPROX. 2 5/8" FWD OF STATION #12.
- THE AFT MOUNTING BRACKET (MF05-421) SHOULD BE MOUNTED APPROX. 3/8" DOWN AS SHOWN & APPROX. 3/4" IN TOWARD THE TAILWHEEL BELLCRANK ARM (MG01-34).
- POSITIONING THE MICRO SWITCHES CAN BE DONE BY MOVING THE BELLCRANK ARM FULLY FWD & AFT. AT THESE POINTS IS WHERE THE MICRO SWITCHES NEED TO BE LOCATED, MARK THESE LOCATIONS & DRILL THE HOLES FOR THE MICRO SWITCH MOUNTING SCREWS. (BE SURE WHEN MOUNTING THE MICRO SWITCHES THAT THE BELLCRANK ARM TAB WILL ACTIVATE EACH MICRO SWITCH WHEN FULLY FWD AND AFT.)
- IT IS RECOMMENDED TO SLOT THE LOWER HOLE FOR THE MICRO SWITCH'S AS SHOWN, JUST INCASE ADJUSTMENTS ARE NEEDED.

MICRO SWITCH HOLE LAYOUT

		TITAN AIRCRAFT SUPPLY	
		1419 STATE ROUTE 45 SOUTH AUSTINBURG, OHIO 44010	
MATERIAL		DETAIL NAME TAILWHEEL LIMIT SWITCH LOCATIONS	
DRAWN S. HENDERSON	DATE 7/2/07	SCALE 1/4"=1"	PART NO.
CHECKED MSH	DATE 8/30/07	ASSEMBLY NAME	
APPROVED KORY B.	DATE 11/24/08	PART NO.	DRAWING NO.
		DRAWING NO. B T51-07-INS-1638-A	