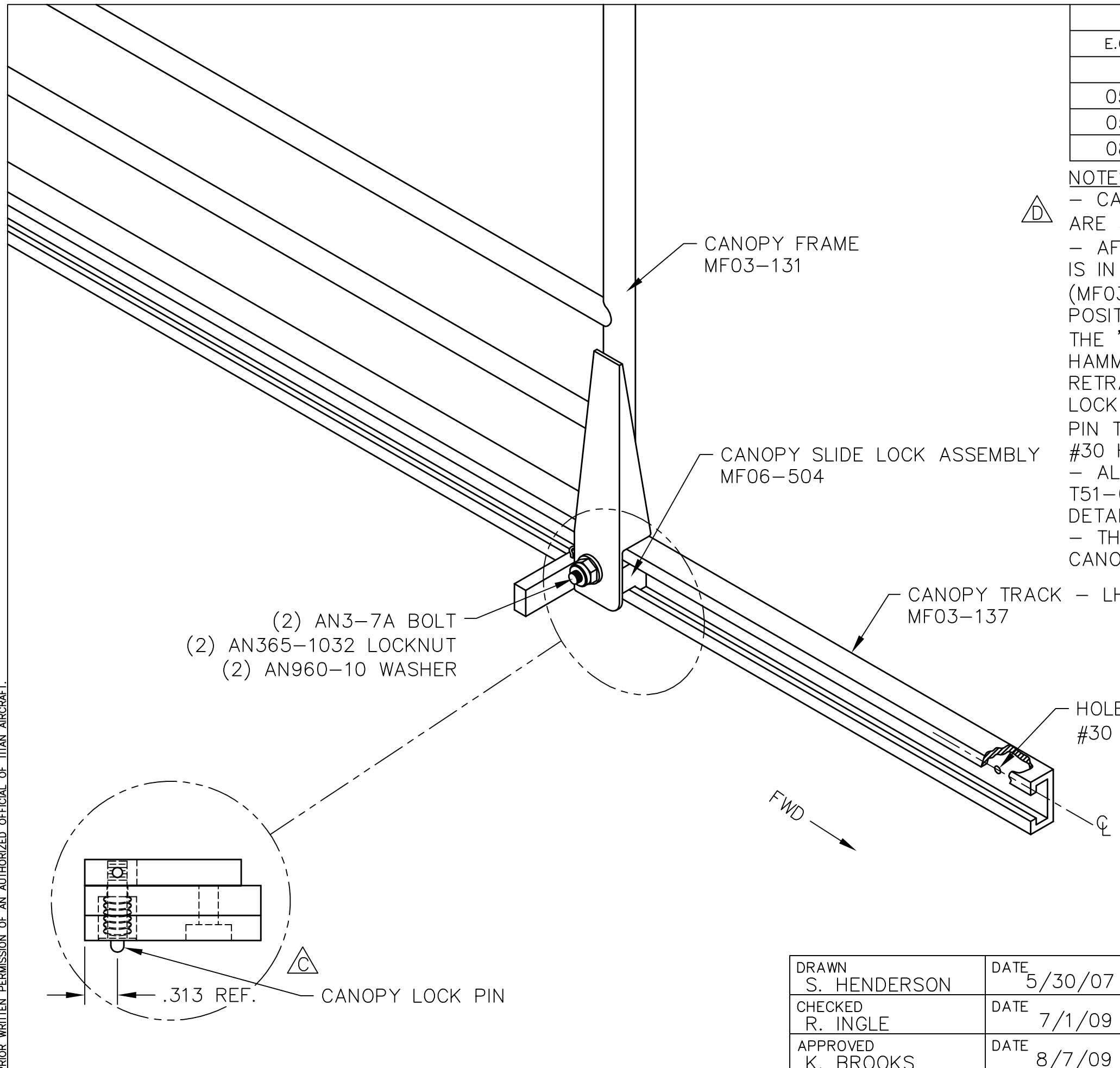


THIS DOCUMENT PROPRIETARY TO TITAN AIRCRAFT, AND IS NOT TO BE USED, CIRCULATED, REPRODUCED, COPIED, OR DISCLOSED IN ANY MANNER WITHOUT PRIOR WRITTEN PERMISSION OF AN AUTHORIZED OFFICIAL OF TITAN AIRCRAFT.



REVISIONS				
E.C. NO.	REV.	DESCRIPTION	BY	DATE
	A	DRAWING RELEASED	SH	5/07
0584	B	NOTES ADDED	SH	12/07
0595	C	NOTES ADDED & DETAIL CHANGED	SH	1/08
0820	D	NOTES ADDED	SH	12/08

NOTES:

- △ CANOPY TRACKS ARE PRE-DRILLED BY FACTORY WHICH ARE 5" ON CENTER.
- AFTER THE CANOPY SLIDE LOCK ASSEMBLY (MF06-504) IS IN PLACE AND ATTACHED TO THE CANOPY FRAME (MF03-131). MOVE THE CANOPY TO THE MOST FWD POSITION AND FOLD THE CANOPY LOCK HANDLE OVER TO THE "LOCKED" POSITION. USING A BLUNT PUNCH AND HAMMER, TAP THE BACK SIDE OF THE LOCK PIN THEN RETRACT THE CANOPY. THE MARK THAT WAS LEFT BY THE LOCK PIN IS THE CENTER OF THE #30 HOLE FOR THE LOCK PIN TO REST WHEN IT'S IN THE CLOSED POSITION. DRILL A #30 HOLE AND DEBURR.
- ALSO REFER TO DRAWINGS T51-03-INS-0649, T51-04-INS-1037, & T51-07-INS-1633 FOR ADDITIONAL DETAILS.
- THE SAME HARDWARE IS USED ON THE RH SIDE OF THE CANOPY, USE MF03-144 INSTEAD OF THE CANOPY LOCK.

TITAN AIRCRAFT SUPPLY
 1419 STATE ROUTE 45 SOUTH
 AUSTINBURG, OHIO 44010

DETAIL NAME		CANOPY LOCK INSTALLATION	
DRAWN	DATE	SCALE	PART NO.
S. HENDERSON	5/30/07	1/2"=1"	
CHECKED	DATE	ASSEMBLY NAME	
R. INGLE	7/1/09	PART NO.	DRAWING NO. F30
APPROVED	DATE	DRAWING NO. B T51-07-INS-1634-D	
K. BROOKS	8/7/09		