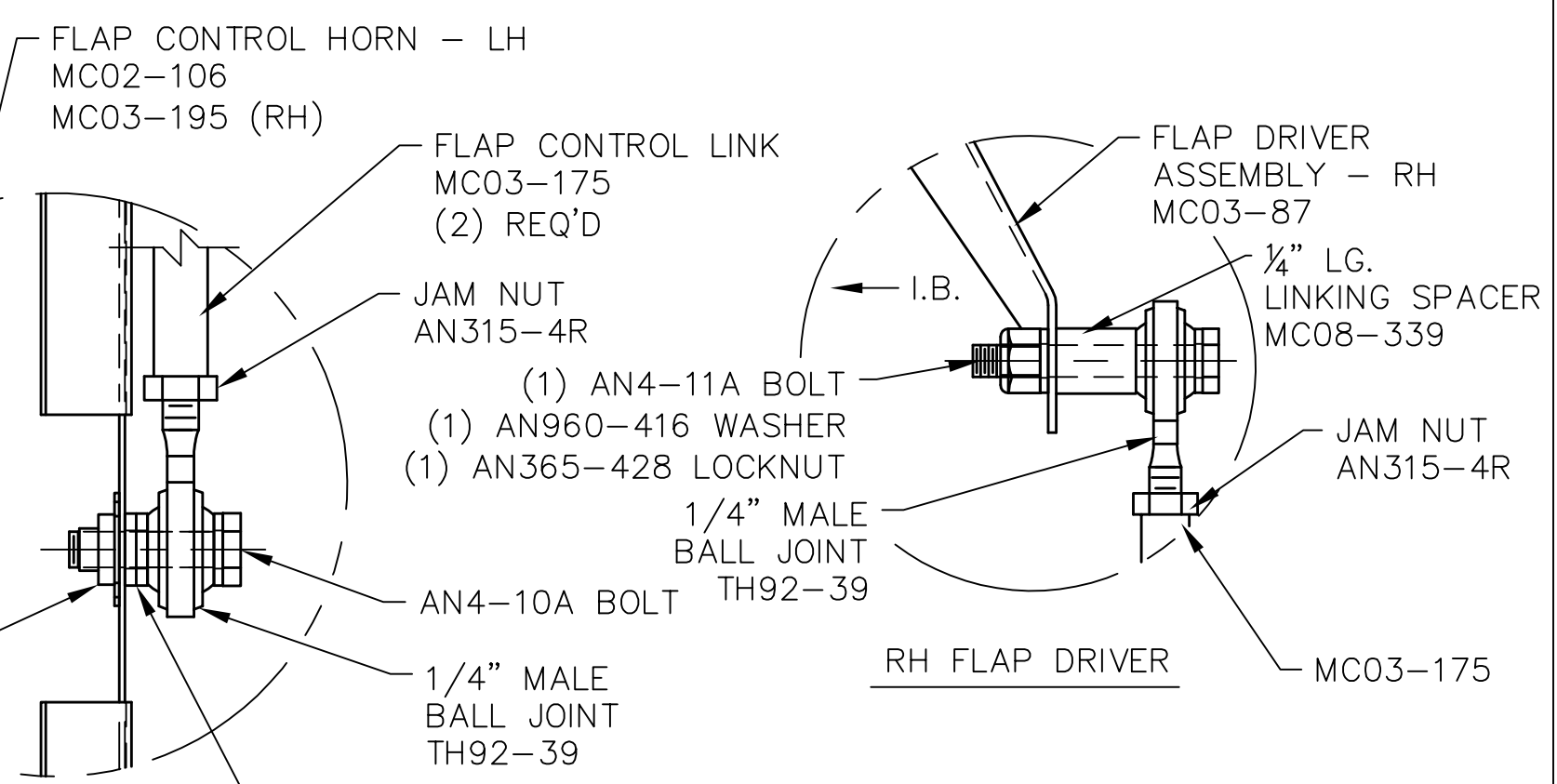
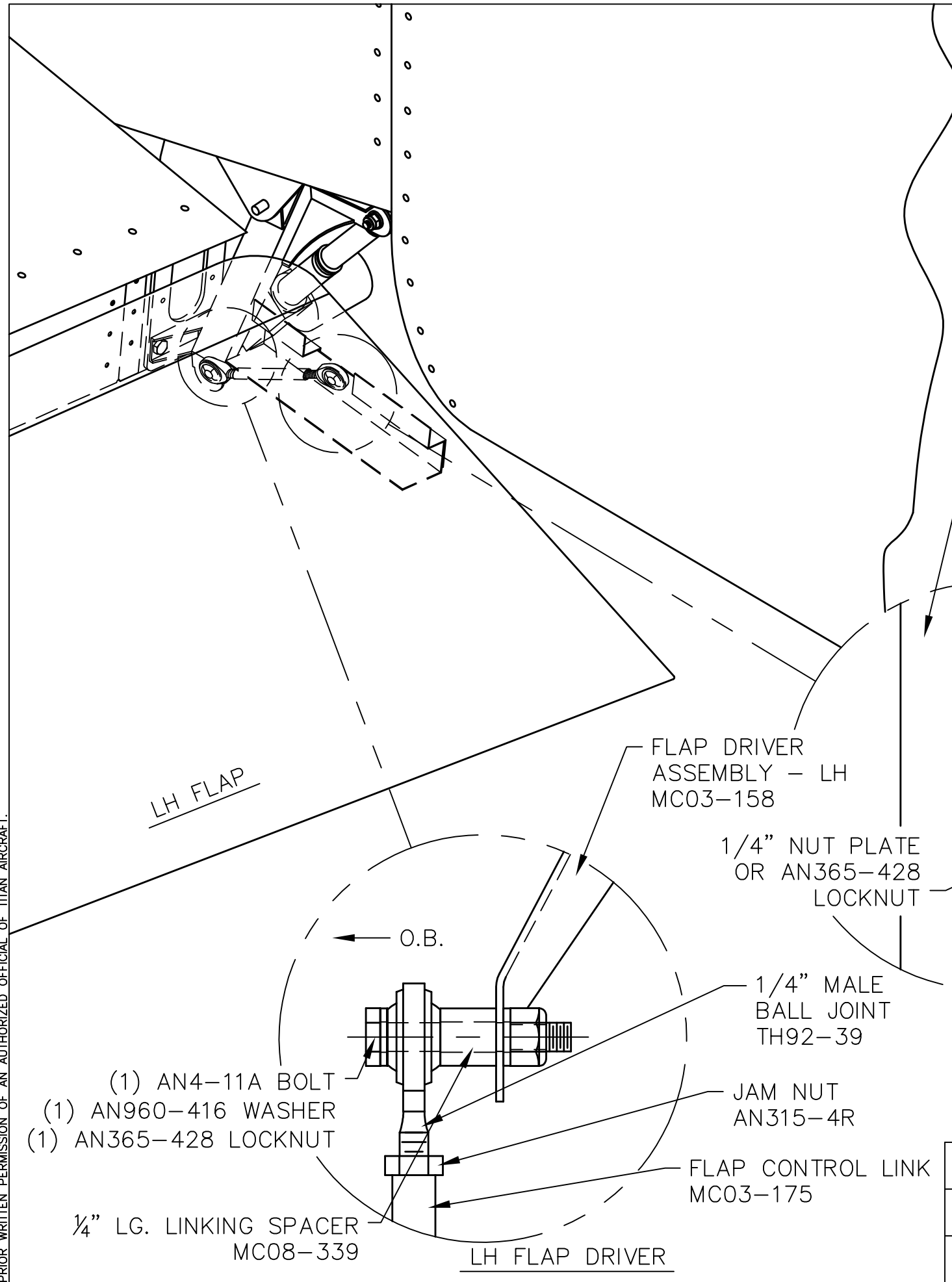


THIS DOCUMENT PROPRIETARY TO TITAN AIRCRAFT, AND IS NOT TO BE USED, CIRCULATED, REPRODUCED, COPIED, OR DISCLOSED IN ANY MANNER WITHOUT PRIOR WRITTEN PERMISSION OF AN AUTHORIZED OFFICIAL OF TITAN AIRCRAFT.

REVISIONS				
E.C. NO.	REV.	DESCRIPTION	BY	DATE
	A	DRAWING RELEASED	SH	1/07
0842	B	VIEW ADDED/PARTS CHANGED	SH	1/09
1001	C	MATCH HARDWARE TO INS-0929	BH	11/09

NOTE:

- BOLT THE FLAP CONTROL LINK (MC03-175) TO THE FLAP DRIVER ARM, USING THE HARDWARE SHOWN.
- RUN THE FLAP MOTOR TO THE UP POSITION & INSTALL EACH FLAP.
- HOLD THE FLAP IN THE UP POSITION & ADJUST THE FLAP CONTROL LINKS TO THE MOUNTING HOLE LOCATED ON THE FLAP'S.
- RUN THE FLAP MOTOR TO THE DOWN POSITION & BOLT THE FLAP CONTROL LINK TO THE FLAP.
- USE (4) MS20426A3-4 SOLID RIVETS TO ATTACH 1/4" NUT-PLATES TO FLAPS.
- REFER TO DRAWING T51-03-INS-0929 FOR FLAP MOTOR MOUNTING INSTRUCTIONS & DRIVER INSTALLATION.



TITAN AIRCRAFT		TITAN AIRCRAFT SUPPLY	
		1419 STATE ROUTE 45 SOUTH AUSTINBURG, OHIO 44010	
DETAIL NAME		FLAP MOTOR LINKAGE INSTALLATION	
SCALE 1/4"=1"		PART NO.	
ASSEMBLY NAME			
PART NO.		DRAWING NO. C7	
DRAWING NO. B T51-07-INS-1583-C			

DRAWN B. HARE	DATE 11/12/09
CHECKED R. INGLE	DATE 11/30/09
APPROVED K. BROOKS	DATE 12/7/09