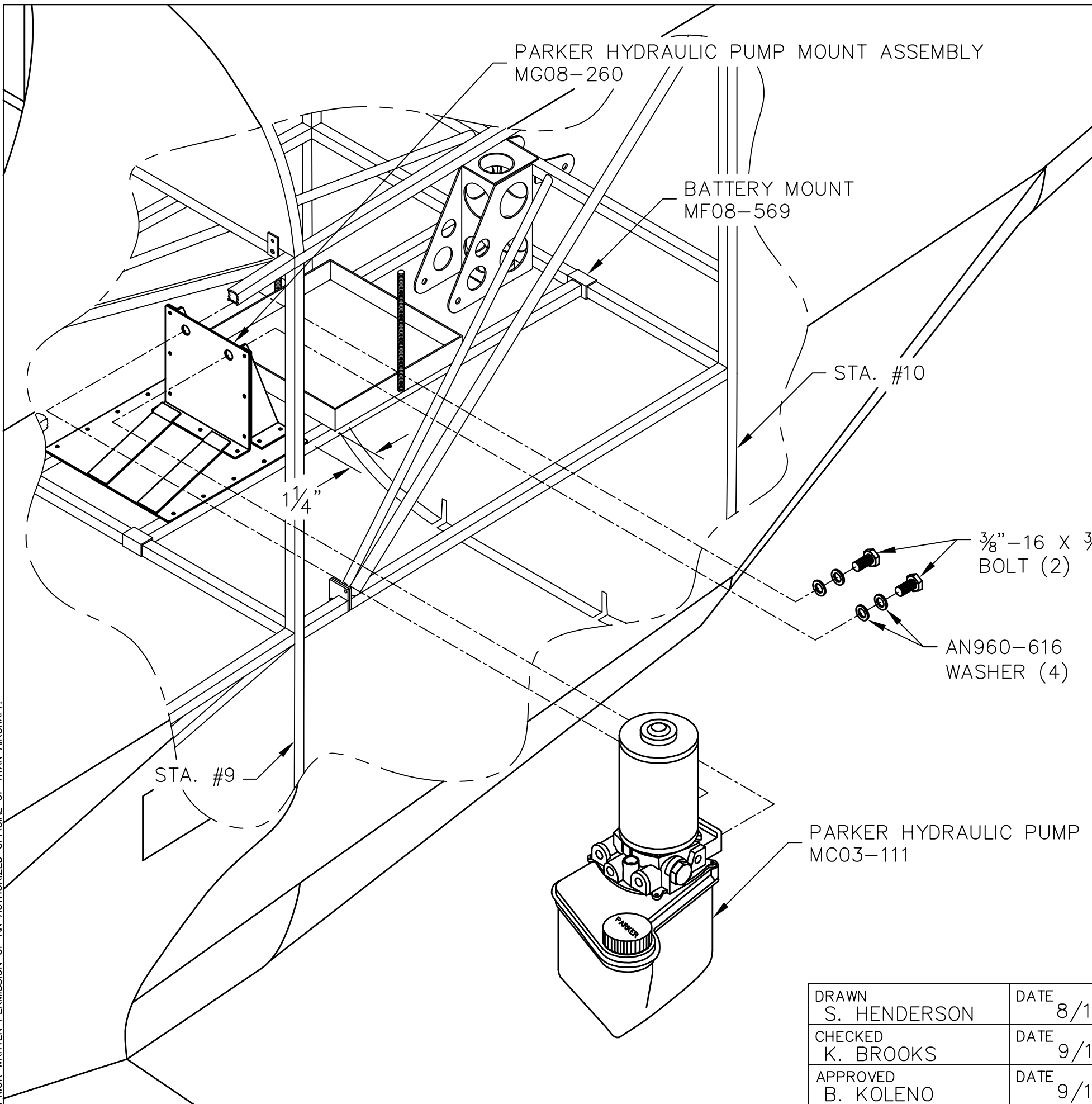


THIS DOCUMENT PROPRIETARY TO TITAN AIRCRAFT, AND IS NOT TO BE USED, CIRCULATED, REPRODUCED, COPIED, OR DISCLOSED IN ANY MANNER WITHOUT PRIOR WRITTEN PERMISSION OF AN AUTHORIZED OFFICIAL OF TITAN AIRCRAFT.



REVISIONS				
E.C. NO.	REV.	DESCRIPTION	BY	DATE
	A	DRAWING RELEASED	SH	8/06
0958	B	MOUNTING BOLTS ADDED	SH	6/09

NOTES:

- FOR HEAVIER ENGINE APPLICATIONS IT IS RECOMMENDED TO PLACE THE HYDRAULIC PUMP BETWEEN STATIONS #9 & #10 TO EVEN OUT THE C.G. IF YOU HAVE A LIGHTER POWERPLANT, SUCH AS A ROTAX, THE HYDRAULIC PUMP MAY NEED TO BE MOUNTED FORWARD, ON BULKHEAD #3. SEE DRAWING T51-06-INS-1520 FOR DETAILS.
- THE PARKER HYDRAULIC PUMP (MC03-111) DOES NOT REQUIRE A SOLENOID VALVE OR AN OVER PRESSURE SWITCH.
- CLAMP THE PARKER HYDRAULIC PUMP MOUNT ASSEMBLY (MG08-260) IN PLACE APPROXIMATELY 1/4" FROM THE BATTERY MOUNT (MF08-569).
- MATCH DRILL THE #30 RIVET HOLES FROM THE PUMP MOUNT ASSEMBLY INTO THE BATTERY MOUNT RAILS.
- BOND AND RIVET USING (10) SD43BS RIVETS.
- REMOVE THE FILM BACKING FROM THE VELCRO AND SET THE HYDRAULIC PUMP IN PLACE MAKING SURE TO LINE UP THE HOLES BETWEEN IT AND THE MOUNT.
- USE (2) 3/8"-16 X 3/4" HEX HEAD S.S. BOLTS AND (4) AN960-616 WASHERS WHEN MOUNTING THE HYDRAULIC PUMP. MAKE SURE TO PUT 242 BLUE LOCTITE ON THE THREADS.

TITAN AIRCRAFT SUPPLY
 1419 STATE ROUTE 45 SOUTH
 AUSTINBURG, OHIO 44010

DETAIL NAME		AFT HYDRAULIC PUMP INSTALLATION	
SCALE	N/A	PART NO.	
ASSEMBLY NAME			
PART NO.		DRAWING NO. H7	
DRAWING NO.		B T51-06-INS-1521-B	

DRAWN	S. HENDERSON	DATE	8/16/06
CHECKED	K. BROOKS	DATE	9/10/10
APPROVED	B. KOLENO	DATE	9/16/10