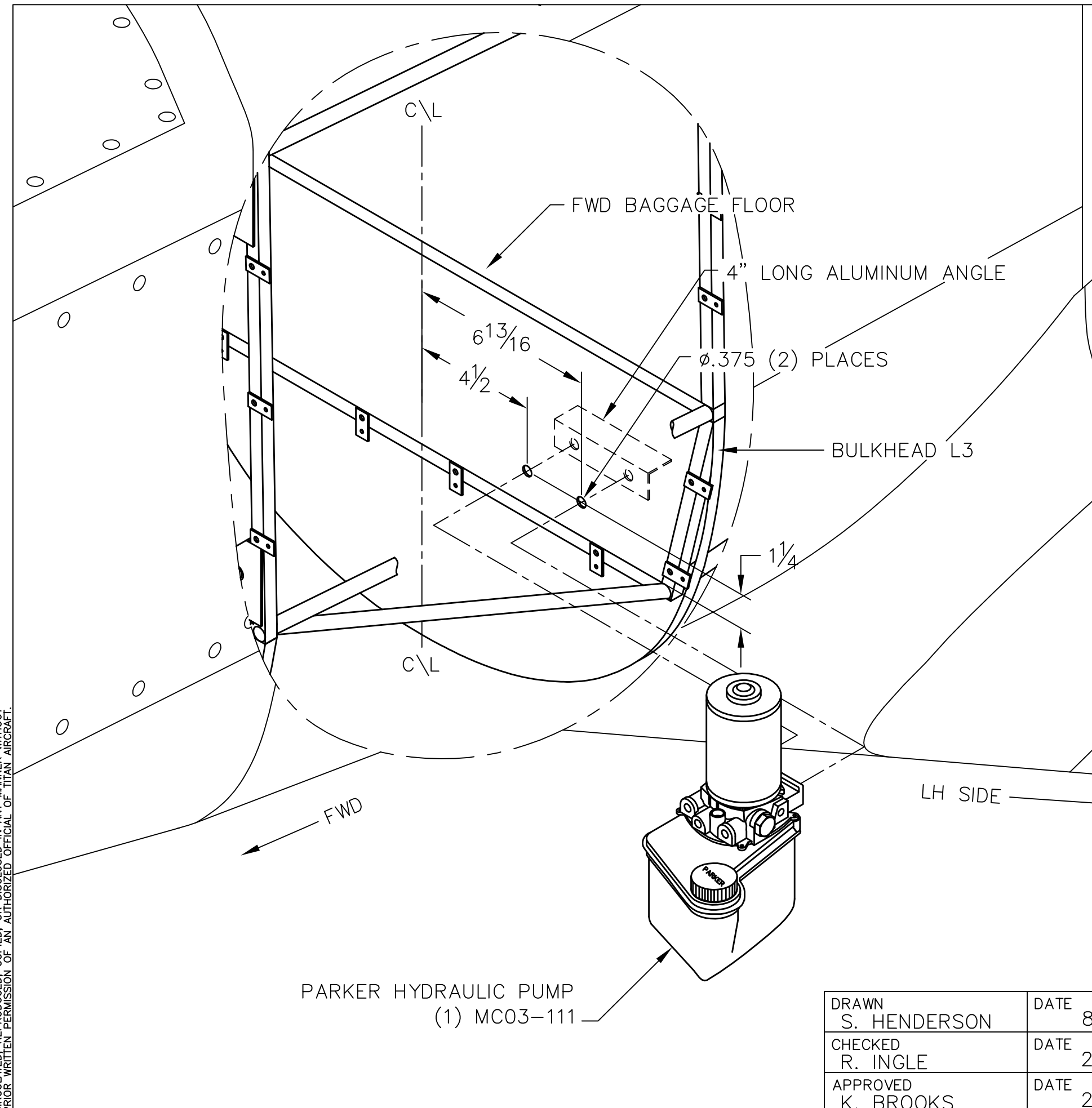


THIS DOCUMENT PROPRIETARY TO TITAN AIRCRAFT, AND IS NOT TO BE USED, CIRCULATED, REPRODUCED, COPIED, OR DISCLOSED IN ANY MANNER WITHOUT PRIOR WRITTEN PERMISSION OF AN AUTHORIZED OFFICIAL OF TITAN AIRCRAFT.



REVISIONS				
E.C. NO.	REV.	DESCRIPTION	BY	DATE
	A	DRAWING RELEASED	SH	8/06
0959	B	MOUNTING LOCATION ADDED	SH	6/09

NOTES:

- DEPENDING ON THE POWERPLANT, THE HYDRAULIC PUMP MAY NEED TO BE MOUNTED BEHIND THE AFT BAGGAGE COMPARTMENT. SEE DRAWING T51-06-INS-1521 FOR DETAILS.
- THIS HYDRAULIC PUMP DOES NOT REQUIRE A SOLENOID VALVE OR AN OVER-PRESSURE SWITCH.
- THE PUMP CAN BE MOUNTED ON EITHER THE LH OR RH SIDE OF BULKHEAD L3. IT IS SUGGESTED TO USE THE LEFT HAND SIDE FOR EASY ACCESS TO THE RESERVOIR FILLER. TO BE SURE THE PUMPS POSITION DOESN'T INTERFERE W/ ANY OF THE ELECTRICAL, FUEL LINES, WATER LINES, ETC. USE THE MEASUREMENTS LISTED BELOW.
- FROM THE CENTERLINE OF THE FUSELAGE, MEASURE OVER 4 1/2" AND 6 13/16". FROM THE LOWER CROSS TUBE, MEASURE UP 1 1/4". WHERE THESE INTERSECT, DRILL (2) 0.375 HOLES.
- WHEN MOUNTING THE HYDRAULIC PUMP USE A PIECE OF ALUMINUM ANGLE (4" LONG) ON THE AFT SIDE OF L3, THIS STIFFENS THE MATERIAL & SUPPORTS THE PUMPS WEIGHT. USE (2) 3/8"-16 X 3/4" HEX HEAD S.S. BOLTS FOR MOUNTING PUMP. MAKE SURE TO PUT 242 BLUE LOCTITE ON THE THREADS.
- ROUTE THE HYDRAULIC PUMP LINES THRU L3, AS CLOSE TO THE PUMP AS POSSIBLE. THE 1/8" PIPE FITTINGS ARE SECURED TO THE OUTPUTS OF THE PUMP AND EMERGENCY RETURN (CENTER FITTING).

PARKER HYDRAULIC PUMP
(1) MC03-111


TITAN AIRCRAFT SUPPLY
 1419 STATE ROUTE 45 SOUTH
 AUSTINBURG, OHIO 44010

DETAIL NAME		FWD HYDRAULIC PUMP INSTALLATION	
SCALE	1/4"=1"	PART NO.	
ASSEMBLY NAME			
PART NO.		DRAWING NO. H6	
DRAWING NO.		B T51-06-INS-1520-B	

DRAWN	S. HENDERSON	DATE	8/11/06
CHECKED	R. INGLE	DATE	2/16/10
APPROVED	K. BROOKS	DATE	2/16/10