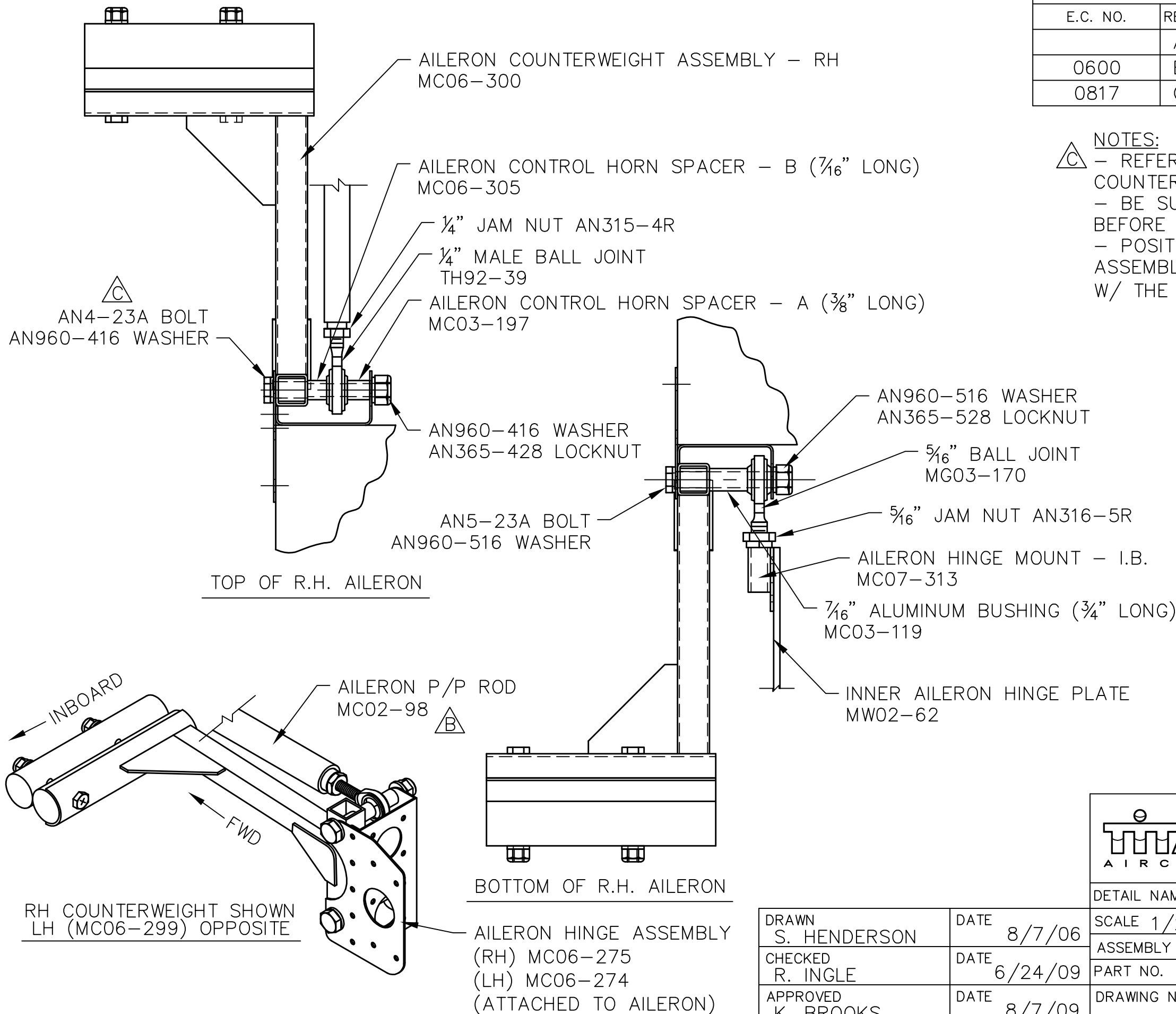


REVISIONS

E.C. NO.	REV.	DESCRIPTION	BY	DATE
	A	DRAWING RELEASED	SH	8/06
0600	B	HARDWARE CHANGED	SH	1/08
0817	C	HARDWARE CHG'D/NOTES ADDED	SH	11/08

NOTES:
 △ - REFER TO DRAWING T51-05-INS-1159 FOR COUNTERWEIGHT ASSEMBLY INSTRUCTIONS.
 - BE SURE AILERONS ARE ATTACHED TO THE WINGS BEFORE ATTACHING THE COUNTERWEIGHTS.
 - POSITION THE COUNTERWEIGHT IN PLACE & ASSEMBLE THE TOP HALF OF THE COUNTERWEIGHT W/ THE HARDWARE SHOWN TO THE LEFT.



TITAN AIRCRAFT SUPPLY
 1419 STATE ROUTE 45 SOUTH
 AUSTIN BURG, OHIO 44010

DRAWN S. HENDERSON		DATE 8/7/06	DETAIL NAME AILERON COUNTERWEIGHT MOUNTING INSTRUCTIONAL	
CHECKED R. INGLE		DATE 6/24/09	SCALE 1/2"=1"	PART NO.
APPROVED K. BROOKS		DATE 8/7/09	ASSEMBLY NAME	
			PART NO.	DRAWING NO. C4
			DRAWING NO. B T51-06-INS-1496-C	

THIS DOCUMENT PROPRIETARY TO TITAN AIRCRAFT, AND IS NOT TO BE USED, CIRCULATED, REPRODUCED, COPIED, OR DISCLOSED IN ANY MANNER WITHOUT PRIOR WRITTEN PERMISSION OF AN AUTHORIZED OFFICIAL OF TITAN AIRCRAFT.