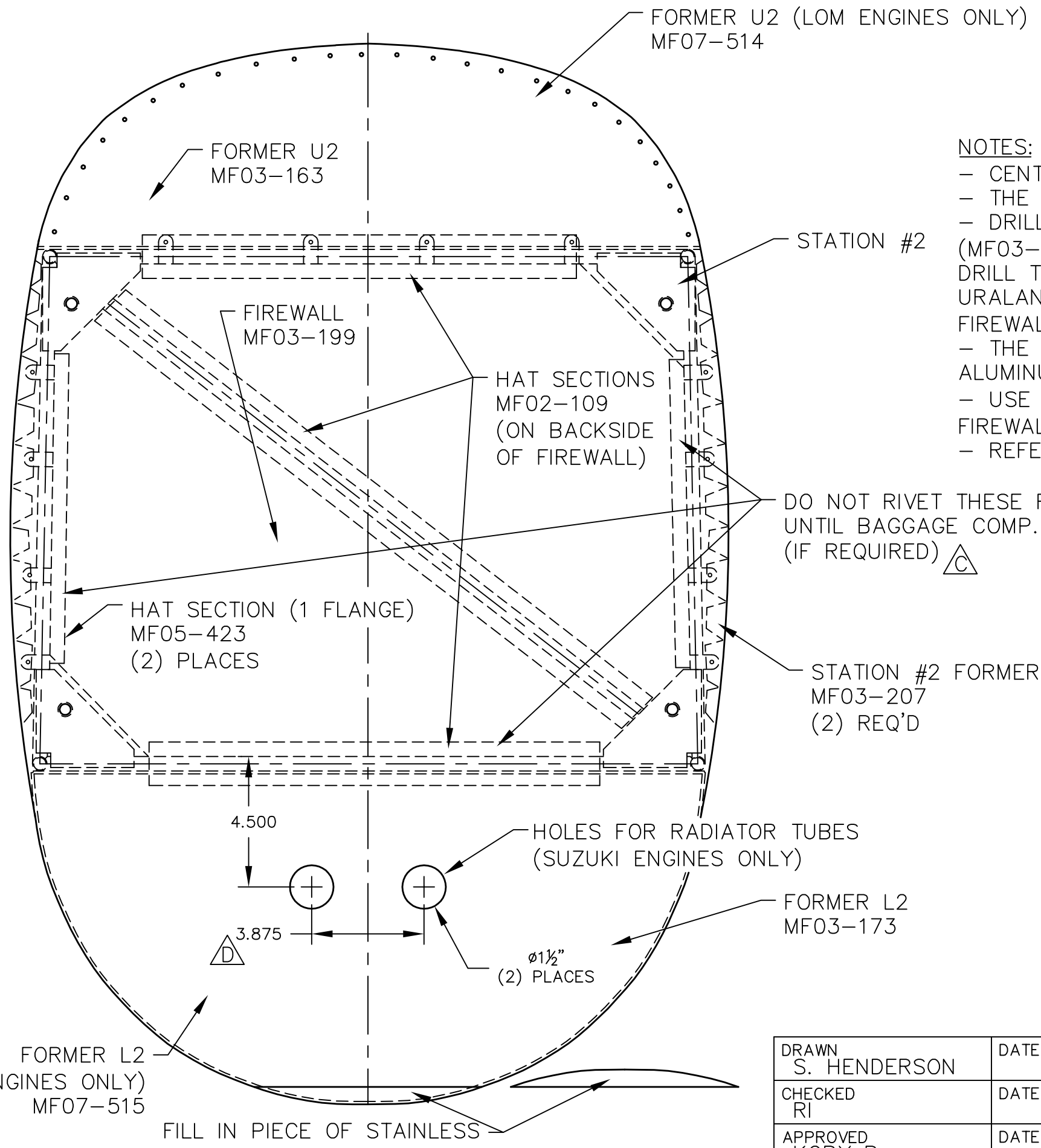


THIS DOCUMENT PROPRIETARY TO TITAN AIRCRAFT, AND IS NOT TO BE USED, CIRCULATED, REPRODUCED, COPIED, OR DISCLOSED IN ANY MANNER WITHOUT PRIOR WRITTEN PERMISSION OF AN AUTHORIZED OFFICIAL OF TITAN AIRCRAFT.

REVISIONS				
E.C. NO.	REV.	DESCRIPTION	BY	DATE
	A	DRAWING RELEASED	SH	7/06
0451	B	UPDATED DRAWING	SH	3/07
0539	C	NOTES CHNG'D/ADDED	SH	10/07



NOTES:

- CENTER THE FIREWALL (MF03-199) OVER STATION #2.
- THE FIREWALL IS HELD IN PLACE BY HAT SECTIONS ON ALL TUBES.
- DRILL OUT THE RIVETS HOLDING THE FLANGE ON BULKHEAD U2 (MF03-163). MATCH DRILL THE FIREWALL TO THESE HOLES & MATCH DRILL THE ENGINE MOUNT HOLES TOO. SPREAD A THIN LAYER OF URALANE OVER THE FORMERS & HAT SECTIONS, THEN RIVET THE FIREWALL TO THE FORMERS & BULKHEADS W/ SD42BS RIVETS.
- THE URALANE WILL HELP ISOLATE THE STAINLESS STEEL FROM THE ALUMINUM.
- USE STATION #2 FORMERS (MF03-207) ON THE EDGE OF THE FIREWALL. (THIS GIVES THE OUTSIDE SKINS A SURFACE TO ATTACH TO.)
- REFER TO DRAWING T51-04-INS-1053.

TITAN AIRCRAFT SUPPLY
 1419 STATE ROUTE 45 SOUTH
 AUSTINBURG, OHIO 44010

DETAIL NAME		FIREWALL INSTALLATION INSTRUCTIONAL	
SCALE	1/4"=1"	PART NO.	
ASSEMBLY NAME		T-51 MUSTANG	
PART NO.		DRAWING NO.	
DRAWING NO.		B T51-06-INS-1487-D	

DRAWN	S. HENDERSON	DATE	7/21/06
CHECKED	RI	DATE	11/11/08
APPROVED	KORY B.	DATE	11/25/08