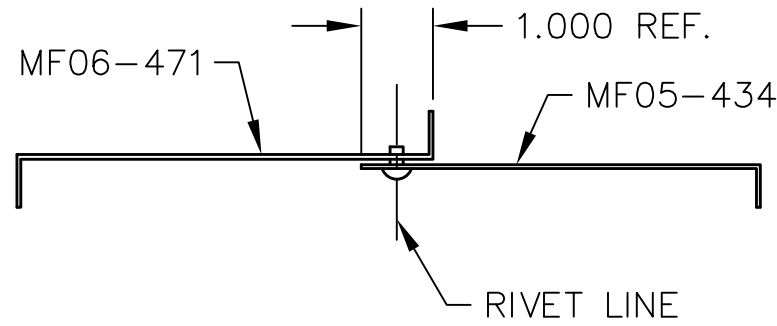


TAILWHEEL ENCLOSURE - RH SIDE
MF06-471



REVISIONS				
E.C. NO.	REV.	DESCRIPTION	BY	DATE
	A	DRAWING RELEASED	SH	5/06
0517	B	DIMENSION ADDED	SH	8/07
0605	C	FWD ENCLOSURES CORRECTED	SH	1/08
0854	D	MF06-471 CUT-OUT CORRECTED	SH	1/09

STATION # 11

3 9/16"

TAILWHEEL ENCLOSURE - AFT
MF05-432

STATION # 12

TAILWHEEL ENCLOSURE - LH SIDE
MF05-434

NOTES:

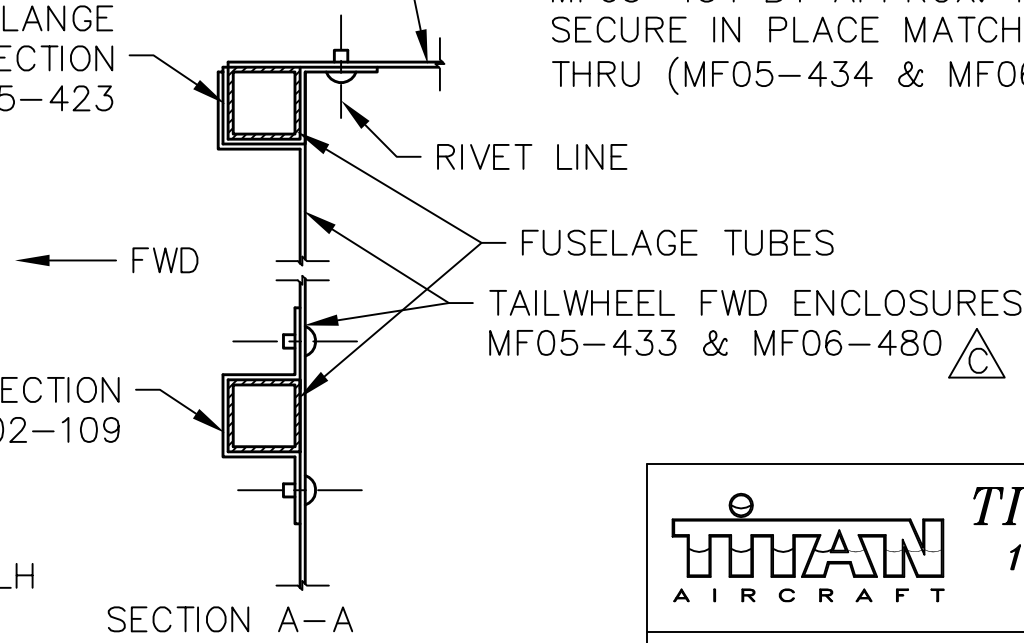
- BE SURE THAT ALL RIVETS USED IN THE TAILWHEEL ENCLOSURE ARE FROM THE INSIDE OF THE TAILWHEEL WHEEL WELL FACING OUT.
- ATTACH THE AFT TAILWHEEL ENCLOSURE (MF05-432) TO THE LOWER AFT SIDE OF STATION #12 WITH TOP FLANGE FACING FWD, USE URALANE TO BOND IN PLACE.
- USE (2) PIECES OF (MF05-423) HAT SECTION & (2) PIECES OF (MF02-109) HAT SECTION & BOND TO STATION #11 AS SHOWN IN SECTION A-A.
- ATTACH THE TAILWHEEL FWD ENCLOSURE (MF05-433 & MF06-480) TO THE AFT SIDE OF STATION #11. (BOND AND RIVET IN PLACE.)
- USE (LH) TAILWHEEL ENCLOSURE SIDE (MF05-434) & SLIDE IN PLACE BETWEEN STATION #11 & #12.
- THE (RH) TAILWHEEL ENCLOSURE SIDE (MF06-471) SHOULD SET IN PLACE, WITH THE INSIDE EDGE OVERLAPPING MF05-434 BY APPROX. 1", AS SHOWN TO THE LEFT. (TO SECURE IN PLACE MATCH DRILL HOLES WITH A #30 DRILL THRU (MF05-434 & MF06-471) THEN BOND AND RIVET)

FWD

TAILWHEEL FWD ENCLOSURE - RH
MF05-433

TAILWHEEL ENCLOSURE SIDE

(1) FLANGE HAT SECTION
MF05-423



TAILWHEEL FWD ENCLOSURE - LH
MF06-480

TITAN AIRCRAFT SUPPLY
1419 STATE ROUTE 45 SOUTH
AUSTINBURG, OHIO 44010

DETAIL NAME TAILWHEEL ENCLOSURE INSTRUCTIONAL

DRAWN S. HENDERSON	DATE 5/24/06
CHECKED RI	DATE 1/30/09
APPROVED KORY B.	DATE 2/3/09

SCALE 1/8"=1"	PART NO.
ASSEMBLY NAME	
PART NO.	DRAWING NO. F45
DRAWING NO. B T51-06-INS-1407-D	

THIS DOCUMENT PROPRIETARY TO TITAN AIRCRAFT, AND IS NOT TO BE USED, CIRCULATED, REPRODUCED, COPIED, OR DISCLOSED IN ANY MANNER WITHOUT PRIOR WRITTEN PERMISSION OF AN AUTHORIZED OFFICIAL OF TITAN AIRCRAFT.